

**BAALC Antibody (N-term)**  
**Purified Rabbit Polyclonal Antibody (Pab)**  
**Catalog # AP6605a****Specification**

---

**BAALC Antibody (N-term) - Product Information**

Application	WB, IHC-P, FC,E
Primary Accession	<a href="#">Q8WXS3</a>
Reactivity	Human
Host	Rabbit
Clonality	Polyclonal
Isotype	Rabbit IgG
Calculated MW	15551
Antigen Region	41-68

**BAALC Antibody (N-term) - Additional Information****Gene ID** 79870**Other Names**

Brain and acute leukemia cytoplasmic protein, BAALC

**Target/Specificity**

This BAALC antibody is generated from rabbits immunized with a KLH conjugated synthetic peptide between 41-68 amino acids from the N-terminal region of human BAALC.

**Dilution**

WB~~1:1000  
IHC-P~~1:50~100  
FC~~1:10~50

**Format**

Purified polyclonal antibody supplied in PBS with 0.09% (W/V) sodium azide. This antibody is prepared by Saturated Ammonium Sulfate (SAS) precipitation followed by dialysis against PBS.

**Storage**

Maintain refrigerated at 2-8°C for up to 2 weeks. For long term storage store at -20°C in small aliquots to prevent freeze-thaw cycles.

**Precautions**

BAALC Antibody (N-term) is for research use only and not for use in diagnostic or therapeutic procedures.

**BAALC Antibody (N-term) - Protein Information****Name** BAALC {ECO:0000303|PubMed:11707601}**Function** May play a synaptic role at the postsynaptic lipid rafts possibly through interaction with

CAMK2A.

#### Cellular Location

Cytoplasm. Synapse, synaptosome {ECO:0000250|UniProtKB:Q920K5}. Membrane raft {ECO:0000250|UniProtKB:Q920K5}. Postsynaptic density {ECO:0000250|UniProtKB:Q920K5}. Note=In neurons, localizes to postsynaptic lipid rafts (By similarity). In myocardial and skeletal muscle cells, localizes to the cytoplasm adjacent to the inner cell membrane, polarized to one end of the myocyte (By similarity) {ECO:0000250|UniProtKB:Q8VHV1, ECO:0000250|UniProtKB:Q920K5}

#### Tissue Location

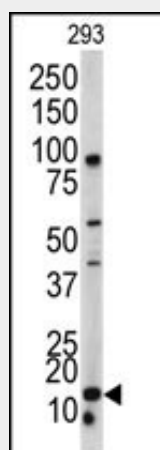
Predominantly expressed in neuroectoderm-derived tissues. Expressed in the brain and spinal cord, and at low levels, in the adrenal gland. In the bone marrow, confined to the CD34+ progenitor cells. Not found in peripheral blood mononuclear cells, nor lymph nodes. Tends to be expressed at high levels in acute myeloid leukemia and glioblastoma cells.

#### BAALC Antibody (N-term) - Protocols

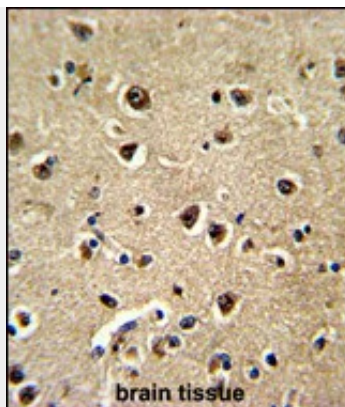
Provided below are standard protocols that you may find useful for product applications.

- [Western Blot](#)
- [Blocking Peptides](#)
- [Dot Blot](#)
- [Immunohistochemistry](#)
- [Immunofluorescence](#)
- [Immunoprecipitation](#)
- [Flow Cytometry](#)
- [Cell Culture](#)

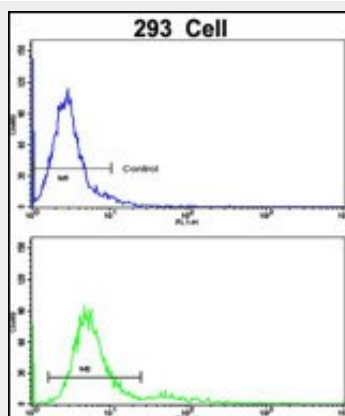
#### BAALC Antibody (N-term) - Images



Western blot analysis of BAALC antibody (N-term) (Cat. #AP6605a) in 293 cell line lysates (35ug/lane). BAALC (arrow) was detected using the purified Pab.



Formalin-fixed and paraffin-embedded human brain tissue reacted with BAALC Antibody (N-term), which was peroxidase-conjugated to the secondary antibody, followed by DAB staining. This data demonstrates the use of this antibody for immunohistochemistry; clinical relevance has not been evaluated.



Flow cytometric analysis of 293 cells using BAALC Antibody (N-term)(bottom histogram) compared to a negative control cell (top histogram). FITC-conjugated goat-anti-rabbit secondary antibodies were used for the analysis.

#### **BAALC Antibody (N-term) - Background**

BAALC may play a synaptic role at the postsynaptic lipid rafts by interacting with CAMK2A.

#### **BAALC Antibody (N-term) - References**

Kuila,N., Leuk. Res. 33 (4), 594-596 (2009)  
Satoskar,A.A., Gene Expr. Patterns 5 (4), 463-473 (2005)