

**C1QTNF1 Antibody (N-term)**  
**Purified Rabbit Polyclonal Antibody (Pab)**  
**Catalog # AP6608a****Specification**

---

**C1QTNF1 Antibody (N-term) - Product Information**

|                   |                        |
|-------------------|------------------------|
| Application       | WB, IHC-P, FC,E        |
| Primary Accession | <a href="#">Q9BXJ1</a> |
| Reactivity        | Human                  |
| Host              | Rabbit                 |
| Clonality         | Polyclonal             |
| Isotype           | Rabbit IgG             |
| Calculated MW     | 31743                  |
| Antigen Region    | 32-61                  |

**C1QTNF1 Antibody (N-term) - Additional Information****Gene ID** 114897**Other Names**

Complement C1q tumor necrosis factor-related protein 1, G protein-coupled receptor-interacting protein, GIP, C1QTNF1, CTRP1

**Target/Specificity**

This C1QTNF1 antibody is generated from rabbits immunized with a KLH conjugated synthetic peptide between 32-61 amino acids from the N-terminal region of human C1QTNF1.

**Dilution**

WB~~1:1000  
IHC-P~~1:50~100  
FC~~1:10~50

**Format**

Purified polyclonal antibody supplied in PBS with 0.09% (W/V) sodium azide. This antibody is prepared by Saturated Ammonium Sulfate (SAS) precipitation followed by dialysis against PBS.

**Storage**

Maintain refrigerated at 2-8°C for up to 2 weeks. For long term storage store at -20°C in small aliquots to prevent freeze-thaw cycles.

**Precautions**

C1QTNF1 Antibody (N-term) is for research use only and not for use in diagnostic or therapeutic procedures.

**C1QTNF1 Antibody (N-term) - Protein Information****Name** C1QTNF1

## Synonyms CTRP1

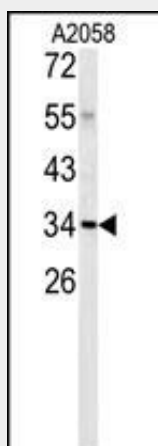
**Cellular Location**  
Secreted.

## C1QTNF1 Antibody (N-term) - Protocols

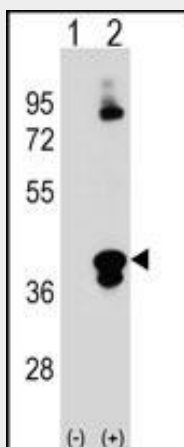
Provided below are standard protocols that you may find useful for product applications.

- [Western Blot](#)
- [Blocking Peptides](#)
- [Dot Blot](#)
- [Immunohistochemistry](#)
- [Immunofluorescence](#)
- [Immunoprecipitation](#)
- [Flow Cytometry](#)
- [Cell Culture](#)

## C1QTNF1 Antibody (N-term) - Images

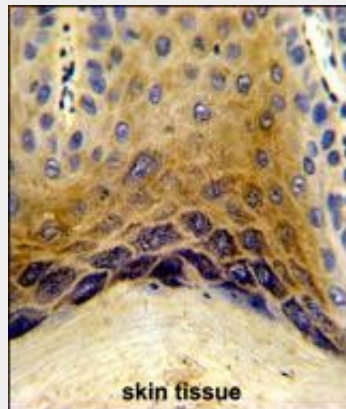


Western blot analysis of C1QTNF1 antibody (N-term) (Cat. #AP6608a) in A2058 cell line lysates (35ug/lane). C1QTNF1 (arrow) was detected using the purified Pab.

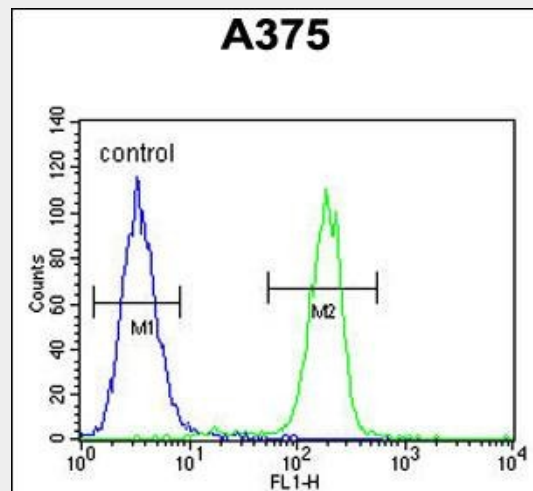


Western blot analysis of C1QTNF1 (arrow) using rabbit polyclonal C1QTNF1 Antibody (N-term) (Cat. #AP6608a). 293 cell lysates (2 ug/lane) either nontransfected (Lane 1) or transiently

transfected (Lane 2) with the C1QTNF1 gene.



Formalin-fixed and paraffin-embedded human skin tissue reacted with C1QTNF1 Antibody (N-term), which was peroxidase-conjugated to the secondary antibody, followed by DAB staining. This data demonstrates the use of this antibody for immunohistochemistry; clinical relevance has not been evaluated.



C1QTNF1 Antibody (N-term) (Cat. #AP6608a) flow cytometric analysis of A375 cells (right histogram) compared to a negative control cell (left histogram). FITC-conjugated goat-anti-rabbit secondary antibodies were used for the analysis.

#### **C1QTNF1 Antibody (N-term) - References**

Wong, G.W., Biochem. J. 416 (2), 161-177 (2008)  
Ennis, S., Lancet 372 (9652), 1828-1834 (2008)