

**GLS2 Antibody (C-term E513)**  
**Affinity Purified Rabbit Polyclonal Antibody (Pab)**  
**Catalog # AP6650D**

**Specification**

---

**GLS2 Antibody (C-term E513) - Product Information**

Application	WB, IHC-P-Leica,E
Primary Accession	<a href="#">Q9UI32</a>
Other Accession	<a href="#">P28492</a> , <a href="#">Q571F8</a> , <a href="#">NP_037399.2</a>
Reactivity	Human, Mouse
Predicted	Rat
Host	Rabbit
Clonality	Polyclonal
Isotype	Rabbit IgG
Antigen Region	498-524

**GLS2 Antibody (C-term E513) - Additional Information**

**Gene ID** 27165

**Other Names**

Glutaminase liver isoform, mitochondrial, GLS, L-glutaminase, L-glutamine amidohydrolase, GLS2, GA

**Target/Specificity**

This GLS2 antibody is generated from rabbits immunized with a KLH conjugated synthetic peptide between 498-524 amino acids of human GLS2.

**Dilution**

WB~~1:1000  
IHC-P-Leica~~1:500

**Format**

Purified polyclonal antibody supplied in PBS with 0.09% (W/V) sodium azide. This antibody is purified through a protein A column, followed by peptide affinity purification.

**Storage**

Maintain refrigerated at 2-8°C for up to 2 weeks. For long term storage store at -20°C in small aliquots to prevent freeze-thaw cycles.

**Precautions**

GLS2 Antibody (C-term E513) is for research use only and not for use in diagnostic or therapeutic procedures.

**GLS2 Antibody (C-term E513) - Protein Information**

**Name** GLS2

## Synonyms GA

**Function** Plays an important role in the regulation of glutamine catabolism. Promotes mitochondrial respiration and increases ATP generation in cells by catalyzing the synthesis of glutamate and alpha- ketoglutarate. Increases cellular anti-oxidant function via NADH and glutathione production. May play a role in preventing tumor proliferation.

## Cellular Location

Mitochondrion.

## Tissue Location

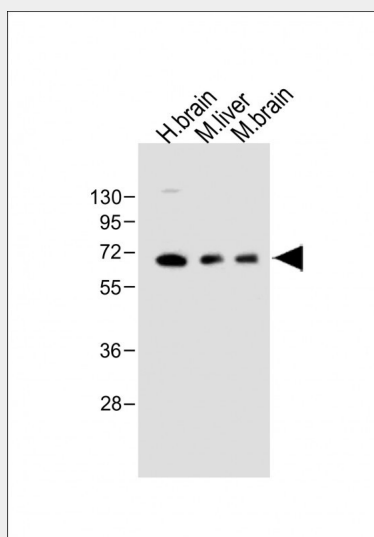
Highly expressed in liver. Expressed in brain and pancreas. Not observed in heart, placenta, lung, skeletal muscle and kidney. Expression is significantly reduced in hepatocellular carcinomas.

## GLS2 Antibody (C-term E513) - Protocols

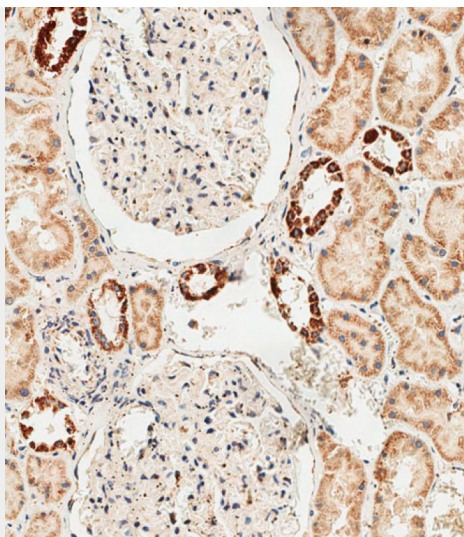
Provided below are standard protocols that you may find useful for product applications.

- [Western Blot](#)
- [Blocking Peptides](#)
- [Dot Blot](#)
- [Immunohistochemistry](#)
- [Immunofluorescence](#)
- [Immunoprecipitation](#)
- [Flow Cytometry](#)
- [Cell Culture](#)

## GLS2 Antibody (C-term E513) - Images



All lanes : Anti-GLS2 Antibody (C-term E513) at 1:1000 dilution Lane 1: Human brain lysate Lane 2: Mouse liver lysate Lane 3: Mouse brain lysate Lysates/proteins at 20 µg per lane. Secondary Goat Anti-Rabbit IgG, (H+L), Peroxidase conjugated at 1/10000 dilution. Predicted band size : 66 kDa Blocking/Dilution buffer: 5% NFDM/TBST.



Immunohistochemical analysis of paraffin-embedded human kidney tissue using AP6650D performed on the Leica® BOND RXm. Samples were incubated with primary antibody(1/500) for 1 hours at room temperature. A undiluted biotinylated CRF Anti-Polyvalent HRP Polymer antibody was used as the secondary antibody.

#### **GLS2 Antibody (C-term E513) - Background**

The protein encoded by this gene is a mitochondrial phosphate-activated glutaminase that catalyzes the hydrolysis of glutamine to stoichiometric amounts of glutamate and ammonia. This protein is functionally similar to the kidney glutaminase but is a little smaller in size. Originally thought to be liver-specific, this protein has been found in other tissues as well. At least one transcribed pseudogene has been found for this gene. [provided by RefSeq].

#### **GLS2 Antibody (C-term E513) - References**

Hu, W., et al. Proc. Natl. Acad. Sci. U.S.A. 107(16):7455-7460(2010)  
Suzuki, S., et al. Proc. Natl. Acad. Sci. U.S.A. 107(16):7461-7466(2010)  
Szeliga, M., et al. Glia 57(9):1014-1023(2009)  
Tian, C., et al. J. Neurochem. 105(3):994-1005(2008)  
Maeshima, H., et al. Prog. Neuropsychopharmacol. Biol. Psychiatry 31(7):1410-1418(2007)

#### **GLS2 Antibody (C-term E513) - Citations**

- [Liver-Type Glutaminase GLS2 Is a Druggable Metabolic Node in Luminal-Subtype Breast Cancer](#)
- [MYC oncogene overexpression drives renal cell carcinoma in a mouse model through glutamine metabolism.](#)