

**PLZF Antibody (C-term)**  
**Purified Rabbit Polyclonal Antibody (Pab)**  
**Catalog # AP6664b**

**Specification**

---

**PLZF Antibody (C-term) - Product Information**

Application	WB,E
Primary Accession	<a href="#">Q05516</a>
Reactivity	Human
Host	Rabbit
Clonality	Polyclonal
Isotype	Rabbit IgG
Calculated MW	74274
Antigen Region	637-666

**PLZF Antibody (C-term) - Additional Information**

**Gene ID** 7704

**Other Names**

Zinc finger and BTB domain-containing protein 16, Promyelocytic leukemia zinc finger protein, Zinc finger protein 145, Zinc finger protein PLZF, ZBTB16, PLZF, ZNF145

**Target/Specificity**

This PLZF antibody is generated from rabbits immunized with a KLH conjugated synthetic peptide between 637-666 amino acids from the C-terminal region of human PLZF.

**Dilution**

WB~~1:1000

**Format**

Purified polyclonal antibody supplied in PBS with 0.09% (W/V) sodium azide. This antibody is prepared by Saturated Ammonium Sulfate (SAS) precipitation followed by dialysis against PBS.

**Storage**

Maintain refrigerated at 2-8°C for up to 2 weeks. For long term storage store at -20°C in small aliquots to prevent freeze-thaw cycles.

**Precautions**

PLZF Antibody (C-term) is for research use only and not for use in diagnostic or therapeutic procedures.

**PLZF Antibody (C-term) - Protein Information**

**Name** ZBTB16

**Synonyms** PLZF, ZNF145

**Function** Acts as a transcriptional repressor (PubMed:[10688654](#), PubMed:[24359566](#)).

Transcriptional repression may be mediated through recruitment of histone deacetylases to target promoters (PubMed:[10688654](#)). May play a role in myeloid maturation and in the development and/or maintenance of other differentiated tissues. Probable substrate-recognition component of an E3 ubiquitin-protein ligase complex which mediates the ubiquitination and subsequent proteasomal degradation of target proteins (PubMed:[14528312](#)).

**Cellular Location**

Nucleus. Nucleus, nuclear body

**Tissue Location**

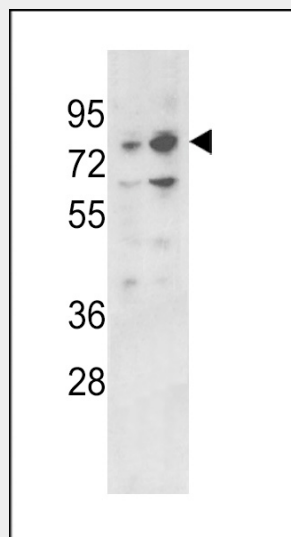
Within the hematopoietic system, PLZF is expressed in bone marrow, early myeloid cell lines and peripheral blood mononuclear cells. Also expressed in the ovary, and at lower levels, in the kidney and lung

**PLZF Antibody (C-term) - Protocols**

Provided below are standard protocols that you may find useful for product applications.

- [Western Blot](#)
- [Blocking Peptides](#)
- [Dot Blot](#)
- [Immunohistochemistry](#)
- [Immunofluorescence](#)
- [Immunoprecipitation](#)
- [Flow Cytometry](#)
- [Cell Culture](#)

**PLZF Antibody (C-term) - Images**



Western blot analysis of PLZF Antibody (C-term) (Cat. #AP6664b) in 293, K562 cell line lysates (35ug/lane). PLZF (arrow) was detected using the purified Pab.

**PLZF Antibody (C-term) - Background**

PLZF is a member of the Krueppel C2H2-type zinc-finger protein family and a zinc finger transcription factor that contains nine Kruppel-type zinc finger domains at the carboxyl terminus.

This protein is located in the nucleus, is involved in cell cycle progression, and interacts with a histone deacetylase. Specific instances of aberrant gene rearrangement at this locus have been associated with acute promyelocytic leukemia (APL).

**PLZF Antibody (C-term) - References**

Shi,J., Int. J. Cancer 125 (7), 1558-1565 (2009)  
Doulatov,S., Genes Dev. 23 (17), 2076-2087 (2009)