

**SERPING1 Antibody (Center)**  
**Purified Rabbit Polyclonal Antibody (Pab)**  
**Catalog # AP6673b****Specification**

---

**SERPING1 Antibody (Center) - Product Information**

Application	IF, WB, IHC-P,E
Primary Accession	<a href="#">P05155</a>
Reactivity	Human
Host	Rabbit
Clonality	Polyclonal
Isotype	Rabbit IgG
Calculated MW	55154
Antigen Region	285-314

**SERPING1 Antibody (Center) - Additional Information****Gene ID** 710**Other Names**

Plasma protease C1 inhibitor, C1 Inh, C1Inh, C1 esterase inhibitor, C1-inhibiting factor, Serpin G1, SERPING1, C1IN, C1NH

**Target/Specificity**

This SERPING1 antibody is generated from rabbits immunized with a KLH conjugated synthetic peptide between 285-314 amino acids from the Central region of human SERPING1.

**Dilution**IF~~1:10~50  
WB~~1:1000  
IHC-P~~1:50~100**Format**

Purified polyclonal antibody supplied in PBS with 0.09% (W/V) sodium azide. This antibody is prepared by Saturated Ammonium Sulfate (SAS) precipitation followed by dialysis against PBS.

**Storage**

Maintain refrigerated at 2-8°C for up to 2 weeks. For long term storage store at -20°C in small aliquots to prevent freeze-thaw cycles.

**Precautions**

SERPING1 Antibody (Center) is for research use only and not for use in diagnostic or therapeutic procedures.

**SERPING1 Antibody (Center) - Protein Information****Name** SERPING1

**Synonyms** C1IN, C1NH

**Function** Activation of the C1 complex is under control of the C1- inhibitor. It forms a proteolytically inactive stoichiometric complex with the C1r or C1s proteases. May play a potentially crucial role in regulating important physiological pathways including complement activation, blood coagulation, fibrinolysis and the generation of kinins. Very efficient inhibitor of FXIIa. Inhibits chymotrypsin and kallikrein.

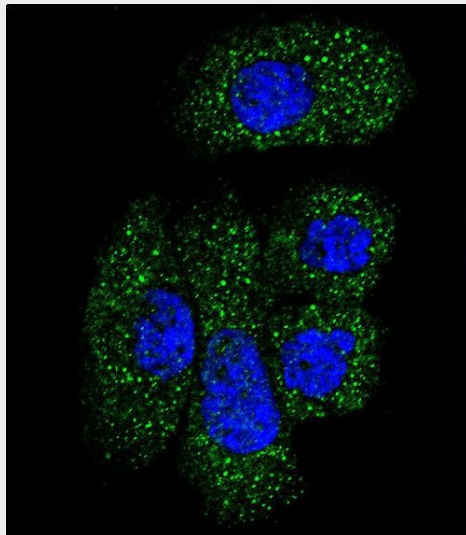
**Cellular Location**

Secreted.

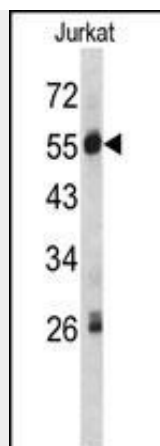
**SERPING1 Antibody (Center) - Protocols**

Provided below are standard protocols that you may find useful for product applications.

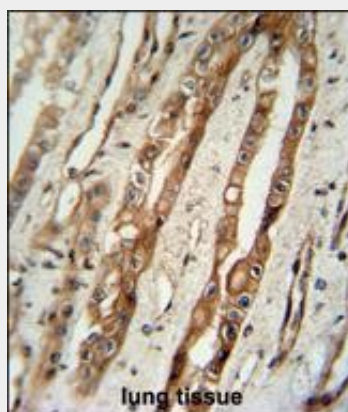
- [Western Blot](#)
- [Blocking Peptides](#)
- [Dot Blot](#)
- [Immunohistochemistry](#)
- [Immunofluorescence](#)
- [Immunoprecipitation](#)
- [Flow Cytometry](#)
- [Cell Culture](#)

**SERPING1 Antibody (Center) - Images**

Confocal immunofluorescent analysis of SERPING1 Antibody (Center)(Cat#AP6673b) with NCI-H292 cell followed by Alexa Fluor 488-conjugated goat anti-rabbit IgG (green). DAPI was used to stain the cell nuclear (blue).



Western blot analysis of SERPING1 antibody (Center) (Cat. #AP6673b) in Jurkat cell line lysates (35ug/lane). SERPING1 (arrow) was detected using the purified Pab.



SERPING1 Antibody (Center) (Cat. #AP6673b) immunohistochemistry analysis in formalin fixed and paraffin embedded human lung tissue followed by peroxidase conjugation of the secondary antibody and DAB staining. This data demonstrates the use of the SERPING1 Antibody (Center) for immunohistochemistry. Clinical relevance has not been evaluated.

### **SERPING1 Antibody (Center) - Background**

SERPING1 is a highly glycosylated plasma protein involved in the regulation of the complement cascade. This protein inhibits activated C1r and C1s of the first complement component and thus regulates complement activation. Deficiency of this protein is associated with hereditary angioneurotic oedema (HANE).

### **SERPING1 Antibody (Center) - References**

Park, K.H., Mol. Vis. 15, 200-207 (2009)  
Gosswein, T., Cytogenet. Genome Res. 121 (3-4), 181-188 (2008)