

**TAGLN Antibody (C-term)**  
**Purified Rabbit Polyclonal Antibody (Pab)**  
**Catalog # AP6678b****Specification**

---

**TAGLN Antibody (C-term) - Product Information**

Application	WB, IHC-P, FC,E
Primary Accession	<a href="#">Q01995</a>
Other Accession	<a href="#">Q9TS87</a>
Reactivity	Human, Mouse
Predicted	Bovine
Host	Rabbit
Clonality	Polyclonal
Isotype	Rabbit IgG
Calculated MW	22611
Antigen Region	139-167

**TAGLN Antibody (C-term) - Additional Information****Gene ID** 6876**Other Names**

Transgelin, 22 kDa actin-binding protein, Protein WS3-10, Smooth muscle protein 22-alpha, SM22-alpha, TAGLN, SM22, WS3-10

**Target/Specificity**

This TAGLN antibody is generated from rabbits immunized with a KLH conjugated synthetic peptide between 139-167 amino acids from the C-terminal region of human TAGLN.

**Dilution**

WB~~1:1000  
IHC-P~~1:50~100  
FC~~1:10~50

**Format**

Purified polyclonal antibody supplied in PBS with 0.09% (W/V) sodium azide. This antibody is prepared by Saturated Ammonium Sulfate (SAS) precipitation followed by dialysis against PBS.

**Storage**

Maintain refrigerated at 2-8°C for up to 2 weeks. For long term storage store at -20°C in small aliquots to prevent freeze-thaw cycles.

**Precautions**

TAGLN Antibody (C-term) is for research use only and not for use in diagnostic or therapeutic procedures.

**TAGLN Antibody (C-term) - Protein Information**

**Name** TAGLN

**Synonyms** SM22, WS3-10

**Function** Actin cross-linking/gelling protein (By similarity). Involved in calcium interactions and contractile properties of the cell that may contribute to replicative senescence.

**Cellular Location**

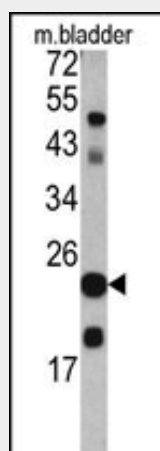
Cytoplasm.

### **TAGLN Antibody (C-term) - Protocols**

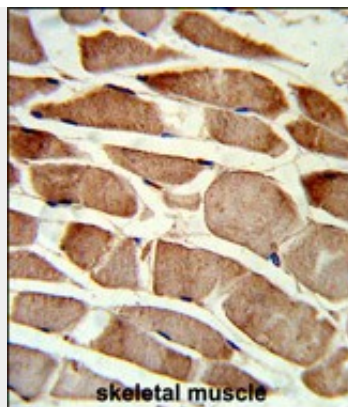
Provided below are standard protocols that you may find useful for product applications.

- [Western Blot](#)
- [Blocking Peptides](#)
- [Dot Blot](#)
- [Immunohistochemistry](#)
- [Immunofluorescence](#)
- [Immunoprecipitation](#)
- [Flow Cytometry](#)
- [Cell Culture](#)

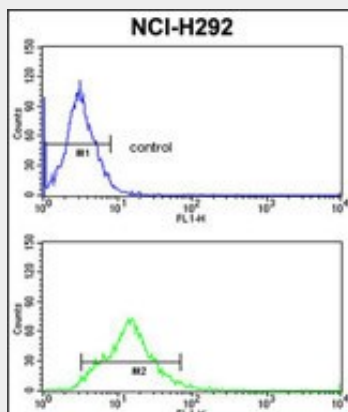
### **TAGLN Antibody (C-term) - Images**



Western blot analysis of TAGLN antibody (C-term) (Cat. #AP6678b) in mouse bladder tissue lysates (35ug/lane). TAGLN (arrow) was detected using the purified Pab.



Formalin-fixed and paraffin-embedded human skeletal muscle reacted with TAGLN Antibody (C-term), which was peroxidase-conjugated to the secondary antibody, followed by DAB staining. This data demonstrates the use of this antibody for immunohistochemistry; clinical relevance has not been evaluated.



TAGLN Antibody (C-term) (Cat. #AP6678b) flow cytometric analysis of NCI-H292 cells (bottom histogram) compared to a negative control cell (top histogram). FITC-conjugated goat-anti-rabbit secondary antibodies were used for the analysis.

### **TAGLN Antibody (C-term) - Background**

TAGLN is a transformation and shape-change sensitive actin cross-linking/gelling protein found in fibroblasts and smooth muscle. Its expression is down-regulated in many cell lines, and this down-regulation may be an early and sensitive marker for the onset of transformation. A functional role of this protein is unclear.

### **TAGLN Antibody (C-term) - References**

Zhao, L., Mod. Pathol. 22 (6), 786-796 (2009) Leguillette, R., Am. J. Respir. Crit. Care Med. 179 (3), 194-204 (2009) Yu, H., FASEB J. 22 (6), 1778-1789 (2008)