

PAX4 Antibody (Center)
Purified Rabbit Polyclonal Antibody (Pab)
Catalog # AP6690C

Specification

PAX4 Antibody (Center) - Product Information

Application	WB, IHC-P, FC,E
Primary Accession	O43316
Other Accession	P32115
Reactivity	Human, Rat
Predicted	Mouse
Host	Rabbit
Clonality	Polyclonal
Isotype	Rabbit IgG
Calculated MW	37833
Antigen Region	171-200

PAX4 Antibody (Center) - Additional Information

Other Names

Paired box protein Pax-4, PAX4

Target/Specificity

This PAX4 antibody is generated from rabbits immunized with a KLH conjugated synthetic peptide between 171-200 amino acids from the Central region of human PAX4.

Dilution

WB~~1:2000
IHC-P~~1:10~50
FC~~1:10~50

Format

Purified polyclonal antibody supplied in PBS with 0.09% (W/V) sodium azide. This antibody is prepared by Saturated Ammonium Sulfate (SAS) precipitation followed by dialysis against PBS.

Storage

Maintain refrigerated at 2-8°C for up to 2 weeks. For long term storage store at -20°C in small aliquots to prevent freeze-thaw cycles.

Precautions

PAX4 Antibody (Center) is for research use only and not for use in diagnostic or therapeutic procedures.

PAX4 Antibody (Center) - Protein Information

Name PAX4

Function Plays an important role in the differentiation and development of pancreatic islet beta

cells. Transcriptional repressor that binds to a common element in the glucagon, insulin and somatostatin promoters. Competes with PAX6 for this same promoter binding site. Isoform 2 appears to be a dominant negative form antagonizing PAX4 transcriptional activity.

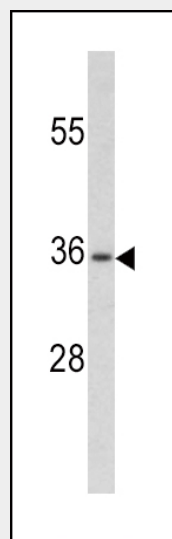
Cellular Location

Nucleus.

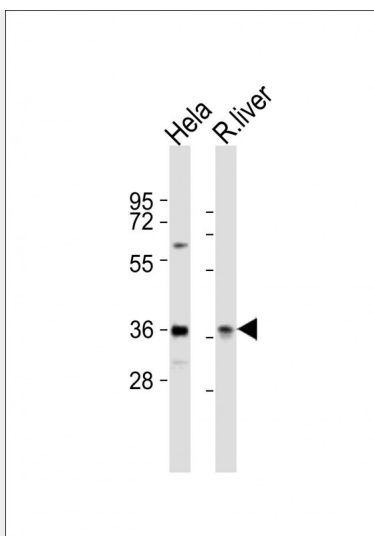
PAX4 Antibody (Center) - Protocols

Provided below are standard protocols that you may find useful for product applications.

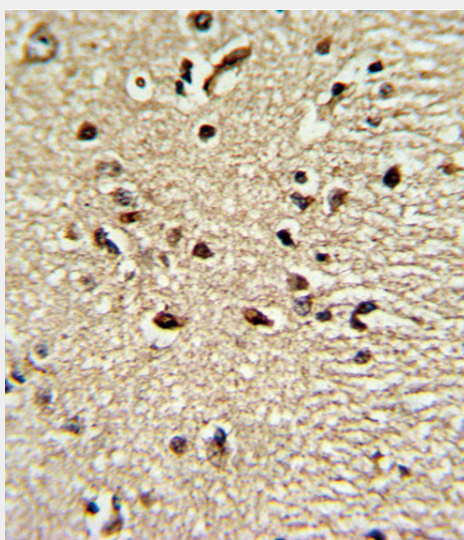
- [Western Blot](#)
- [Blocking Peptides](#)
- [Dot Blot](#)
- [Immunohistochemistry](#)
- [Immunofluorescence](#)
- [Immunoprecipitation](#)
- [Flow Cytometry](#)
- [Cell Culture](#)

PAX4 Antibody (Center) - Images

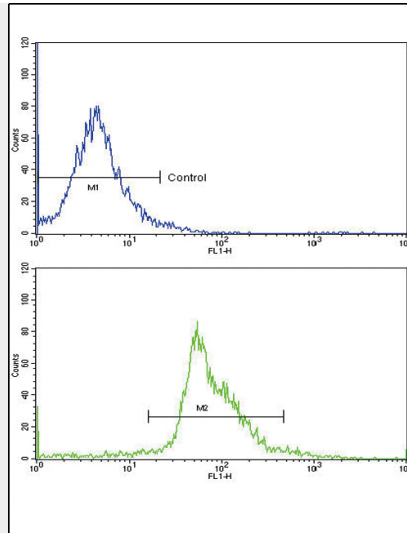
Western blot analysis of PAX4 antibody (Center) (RB20216) in CEM cell line lysates (35ug/lane). PAX4 (arrow) was detected using the purified Pab.



All lanes : Anti-PAX4 Antibody (Center) at 1:2000 dilution Lane 1: HeLa whole cell lysates Lane 2: rat liver lysates Lysates/proteins at 20 µg per lane. Secondary Goat Anti-Rabbit IgG, (H+L), Peroxidase conjugated at 1/10000 dilution Predicted band size : 38 kDa Blocking/Dilution buffer: 5% NFDM/TBST.



Formalin-fixed and paraffin-embedded human brain tissue reacted with PAX4 Antibody (Center), which was peroxidase-conjugated to the secondary antibody, followed by DAB staining. This data demonstrates the use of this antibody for immunohistochemistry; clinical relevance has not been evaluated.



Flow cytometric analysis of widr cells using PAX4 Antibody (Center)(bottom histogram) compared to a negative control cell (top histogram) FITC-conjugated goat-anti-rabbit secondary antibodies were used for the analysis.

PAX4 Antibody (Center) - Background

PAX4 is a member of the paired box (PAX) family of transcription factors. These proteins play critical roles during fetal development and cancer growth. The paired box 4 gene is involved in pancreatic islet development and mouse studies have demonstrated a role for this gene in differentiation of insulin-producing beta cells.

PAX4 Antibody (Center) - References

Hata,S., Int. J. Oncol. 33 (5), 1065-1071 (2008)
Zhang,Y., Diabetes Res. Clin. Pract. 81 (3), 365-369 (2008)