

**CPD Antibody (C-term)**  
**Purified Rabbit Polyclonal Antibody (Pab)**  
**Catalog # AP6725b****Specification**

---

**CPD Antibody (C-term) - Product Information**

Application	WB,E
Primary Accession	<a href="#">O75976</a>
Other Accession	<a href="#">O9JHW1</a> , <a href="#">O89001</a>
Reactivity	Human
Predicted	Mouse, Rat
Host	Rabbit
Clonality	Polyclonal
Isotype	Rabbit IgG
Calculated MW	152931
Antigen Region	1019-1048

**CPD Antibody (C-term) - Additional Information****Gene ID** 1362**Other Names**

Carboxypeptidase D, Metalloprotease D, gp180, CPD

**Target/Specificity**

This CPD antibody is generated from rabbits immunized with a KLH conjugated synthetic peptide between 1019-1048 amino acids from the C-terminal region of human CPD.

**Dilution**

WB~~1:1000

**Format**

Purified polyclonal antibody supplied in PBS with 0.09% (W/V) sodium azide. This antibody is prepared by Saturated Ammonium Sulfate (SAS) precipitation followed by dialysis against PBS.

**Storage**

Maintain refrigerated at 2-8°C for up to 2 weeks. For long term storage store at -20°C in small aliquots to prevent freeze-thaw cycles.

**Precautions**

CPD Antibody (C-term) is for research use only and not for use in diagnostic or therapeutic procedures.

**CPD Antibody (C-term) - Protein Information****Name** CPD**Cellular Location**

Cell membrane {ECO:0000250|UniProtKB:Q90240}; Single-pass type I membrane protein

#### Tissue Location

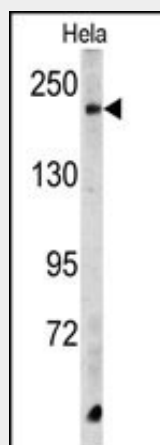
Highly expressed in placenta, pancreas and hepatoma cells. Lower levels found in skeletal muscle, heart and colon carcinoma and melanoma cell lines

#### CPD Antibody (C-term) - Protocols

Provided below are standard protocols that you may find useful for product applications.

- [Western Blot](#)
- [Blocking Peptides](#)
- [Dot Blot](#)
- [Immunohistochemistry](#)
- [Immunofluorescence](#)
- [Immunoprecipitation](#)
- [Flow Cytometry](#)
- [Cell Culture](#)

#### CPD Antibody (C-term) - Images



Western blot analysis of CPD Antibody (C-term) (Cat. #AP6725b) in HeLa cell line lysates (35ug/lane). CPD (arrow) was detected using the purified Pab.

#### CPD Antibody (C-term) - Background

The metallocarboxypeptidase family of enzymes is divided into 2 subfamilies based on sequence similarities. The pancreatic carboxypeptidase-like and the regulatory B-type carboxypeptidase subfamilies. Carboxypeptidase D has been identified as a regulatory B-type carboxypeptidase. CPD is a homolog of duck gp180, a hepatitis B virus-binding protein.

#### CPD Antibody (C-term) - References

Hoff, N.P., J. Clin. Immunol. 27 (6), 568-579 (2007)  
O'Malley, P.G., Biochem. J. 390 (PT 3), 665-673 (2005)