

**Fascin Antibody (Center)**  
**Purified Rabbit Polyclonal Antibody (Pab)**  
**Catalog # AP6736c****Specification**

---

**Fascin Antibody (Center) - Product Information**

Application	WB, IHC-P, FC,E
Primary Accession	<a href="#">Q16658</a>
Reactivity	Human
Host	Rabbit
Clonality	Polyclonal
Isotype	Rabbit IgG
Calculated MW	54530
Antigen Region	322-350

**Fascin Antibody (Center) - Additional Information****Gene ID** 6624**Other Names**

Fascin, 55 kDa actin-bundling protein, Singed-like protein, p55, FSCN1, FAN1, HSN, SNL

**Target/Specificity**

This Fascin antibody is generated from rabbits immunized with a KLH conjugated synthetic peptide between 322-350 amino acids from the Central region of human Fascin.

**Dilution**WB~~1:1000  
IHC-P~~1:50~100  
FC~~1:10~50**Format**

Purified polyclonal antibody supplied in PBS with 0.09% (W/V) sodium azide. This antibody is prepared by Saturated Ammonium Sulfate (SAS) precipitation followed by dialysis against PBS.

**Storage**

Maintain refrigerated at 2-8°C for up to 2 weeks. For long term storage store at -20°C in small aliquots to prevent freeze-thaw cycles.

**Precautions**

Fascin Antibody (Center) is for research use only and not for use in diagnostic or therapeutic procedures.

**Fascin Antibody (Center) - Protein Information****Name** FSCN1**Synonyms** FAN1, HSN, SNL

**Function** Actin-binding protein that contains 2 major actin binding sites (PubMed:[21685497](#), PubMed:[23184945](#)). Organizes filamentous actin into parallel bundles (PubMed:[20393565](#), PubMed:[21685497](#), PubMed:[23184945](#)). Plays a role in the organization of actin filament bundles and the formation of microspikes, membrane ruffles, and stress fibers (PubMed:[22155786](#)). Important for the formation of a diverse set of cell protrusions, such as filopodia, and for cell motility and migration (PubMed:[20393565](#), PubMed:[21685497](#), PubMed:[23184945](#)). Mediates reorganization of the actin cytoskeleton and axon growth cone collapse in response to NGF (PubMed:[22155786](#)).

#### Cellular Location

Cytoplasm, cytosol. Cytoplasm, cell cortex. Cytoplasm, cytoskeleton. Cytoplasm, cytoskeleton, stress fiber. Cell projection, filopodium. Cell projection, invadopodium. Cell projection, microvillus. Cell junction. Note=Colocalized with RUFY3 and F-actin at filopodia of the axonal growth cone. Colocalized with DBN1 and F- actin at the transitional domain of the axonal growth cone (By similarity). {ECO:0000250|UniProtKB:Q61553, ECO:0000269|PubMed:21706053}

#### Tissue Location

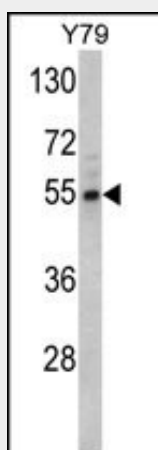
Ubiquitous.

### Fascin Antibody (Center) - Protocols

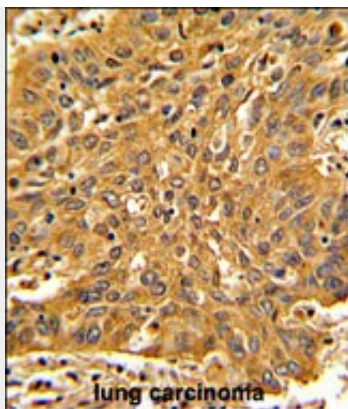
Provided below are standard protocols that you may find useful for product applications.

- [Western Blot](#)
- [Blocking Peptides](#)
- [Dot Blot](#)
- [Immunohistochemistry](#)
- [Immunofluorescence](#)
- [Immunoprecipitation](#)
- [Flow Cytometry](#)
- [Cell Culture](#)

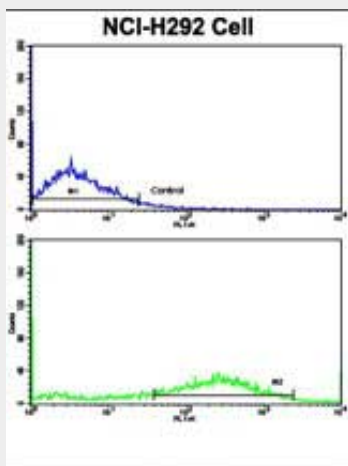
### Fascin Antibody (Center) - Images



Western blot analysis of Fascin Antibody (Center) (Cat. #AP6736c) in Y79 cell line lysates (35ug/lane). Fascin (arrow) was detected using the purified Pab.



Formalin-fixed and paraffin-embedded human lung carcinoma with Fascin Antibody (Center), which was peroxidase-conjugated to the secondary antibody, followed by DAB staining. This data demonstrates the use of this antibody for immunohistochemistry; clinical relevance has not been evaluated.



Flow cytometric analysis of NCI-H292 cells using Fascin Antibody (Center)(bottom histogram) compared to a negative control cell (top histogram). FITC-conjugated goat-anti-rabbit secondary antibodies were used for the analysis.

### **Fascin Antibody (Center) - Background**

Fascin organizes filamentous actin into bundles with a minimum of 4.1:1 actin/fascin ratio. It is probably involved in the assembly of actin filament bundles present in microspikes, membrane ruffles, and stress fibers.

### **Fascin Antibody (Center) - References**

Qualtrough,D., Br. J. Cancer 101 (7), 1124-1129 (2009)  
Ono,S., J. Biol. Chem. 272 (4), 2527-2533 (1997)