

CRHR2 Antibody (Center)
Purified Rabbit Polyclonal Antibody (Pab)
Catalog # AP6787c**Specification**

CRHR2 Antibody (Center) - Product Information

Application	IF, WB, IHC-P, FC,E
Primary Accession	Q13324
Other Accession	P47866
Reactivity	Human
Predicted	Rat
Host	Rabbit
Clonality	Polyclonal
Isotype	Rabbit IgG
Calculated MW	47688
Antigen Region	243-272

CRHR2 Antibody (Center) - Additional Information**Gene ID** 1395**Other Names**

Corticotropin-releasing factor receptor 2, CRF-R-2, CRF-R2, CRFR-2, Corticotropin-releasing hormone receptor 2, CRH-R-2, CRH-R2, CRHR2, CRF2R, CRH2R

Target/Specificity

This CRHR2 antibody is generated from rabbits immunized with a KLH conjugated synthetic peptide between 243-272 amino acids from the Central region of human CRHR2.

Dilution

IF~~1:10~50
WB~~1:1000
IHC-P~~1:50~100
FC~~1:10~50

Format

Purified polyclonal antibody supplied in PBS with 0.09% (W/V) sodium azide. This antibody is prepared by Saturated Ammonium Sulfate (SAS) precipitation followed by dialysis against PBS.

Storage

Maintain refrigerated at 2-8°C for up to 2 weeks. For long term storage store at -20°C in small aliquots to prevent freeze-thaw cycles.

Precautions

CRHR2 Antibody (Center) is for research use only and not for use in diagnostic or therapeutic procedures.

CRHR2 Antibody (Center) - Protein Information

Name CRHR2

Synonyms CRF2R, CRH2R

Function G-protein coupled receptor for CRH (corticotropin-releasing factor), UCN (urocortin), UCN2 and UCN3. Has high affinity for UCN. Ligand binding causes a conformation change that triggers signaling via guanine nucleotide-binding proteins (G proteins) and down-stream effectors, such as adenylate cyclase. Promotes the activation of adenylate cyclase, leading to increased intracellular cAMP levels.

Cellular Location

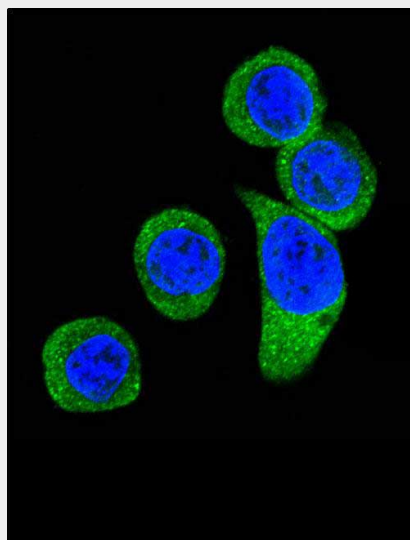
Cell membrane; Multi-pass membrane protein

CRHR2 Antibody (Center) - Protocols

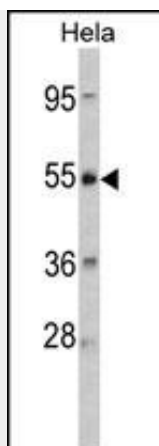
Provided below are standard protocols that you may find useful for product applications.

- [Western Blot](#)
- [Blocking Peptides](#)
- [Dot Blot](#)
- [Immunohistochemistry](#)
- [Immunofluorescence](#)
- [Immunoprecipitation](#)
- [Flow Cytometry](#)
- [Cell Culture](#)

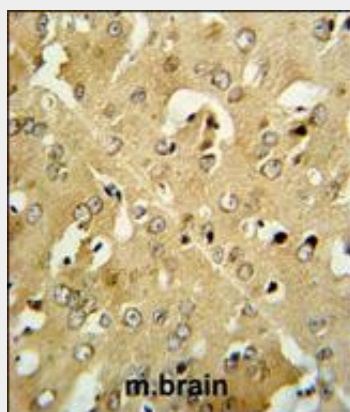
CRHR2 Antibody (Center) - Images



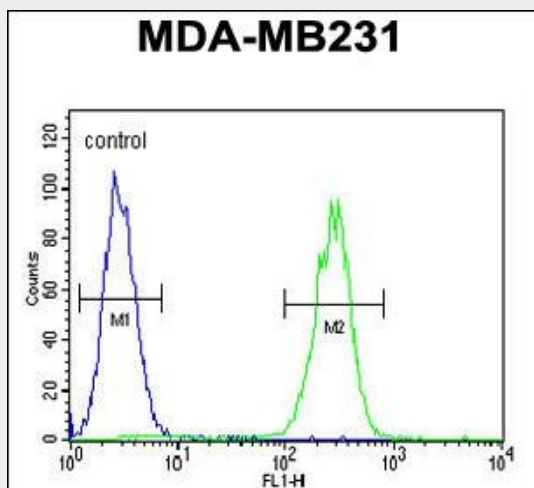
Confocal immunofluorescent analysis of CRHR2 Antibody (Center)(Cat#AP6787c) with Hela cell followed by Alexa Fluor 488-conjugated goat anti-rabbit IgG (green).DAPI was used to stain the cell nuclear (blue).



Western blot analysis of CRHR2 Antibody (Center) (Cat. #AP6787c) in HeLa cell line lysates (35ug/lane). CRHR2 (arrow) was detected using the purified Pab.



CRHR2 Antibody (Center) (Cat. #AP6787c) IHC analysis in formalin fixed and paraffin embedded mouse brain tissue followed by peroxidase conjugation of the secondary antibody and DAB staining. This data demonstrates the use of the CRHR2 Antibody (Center) for immunohistochemistry. Clinical relevance has not been evaluated.



CRHR2 Antibody (Center) (Cat. #AP6787c) flow cytometric analysis of MDA-MB231 cells (right histogram) compared to a negative control cell (left histogram). FITC-conjugated goat-anti-rabbit secondary antibodies were used for the analysis.

CRHR2 Antibody (Center) - Background

CRHR2 is a receptor for corticotropin releasing factor. It Shows high-affinity CRF binding. Also binds to urocortin I, II and III. The activity of this receptor is mediated by G proteins which activate adenylyl cyclase.

CRHR2 Antibody (Center) - References

Yerges, L.M., et.al., J. Bone Miner. Res. (2009)