

**FSHB Antibody (Center T70)**  
**Purified Rabbit Polyclonal Antibody (Pab)**  
**Catalog # AP6797c****Specification**

---

**FSHB Antibody (Center T70) - Product Information**

Application	WB,E
Primary Accession	<a href="#">P01225</a>
Other Accession	<a href="#">Q6IY73</a>
Reactivity	Human
Predicted	Rabbit
Host	Rabbit
Clonality	Polyclonal
Isotype	Rabbit IgG
Antigen Region	55-83

**FSHB Antibody (Center T70) - Additional Information****Gene ID** 2488**Other Names**

Follitropin subunit beta, Follicle-stimulating hormone beta subunit, FSH-B, FSH-beta, Follitropin beta chain, FSHB

**Target/Specificity**

This FSHB antibody is generated from rabbits immunized with a KLH conjugated synthetic peptide between 55-83 amino acids from the Central region of human FSHB.

**Dilution**

WB~~1:1000

**Format**

Purified polyclonal antibody supplied in PBS with 0.09% (W/V) sodium azide. This antibody is prepared by Saturated Ammonium Sulfate (SAS) precipitation followed by dialysis against PBS.

**Storage**

Maintain refrigerated at 2-8°C for up to 2 weeks. For long term storage store at -20°C in small aliquots to prevent freeze-thaw cycles.

**Precautions**

FSHB Antibody (Center T70) is for research use only and not for use in diagnostic or therapeutic procedures.

**FSHB Antibody (Center T70) - Protein Information****Name** FSHB**Function** Together with the alpha chain CGA constitutes follitropin, the follicle-stimulating

hormone, and provides its biological specificity to the hormone heterodimer. Binds FSHR, a G protein-coupled receptor, on target cells to activate downstream signaling pathways (PubMed:[2494176](#), PubMed:[24692546](#)). Follitropin is involved in follicle development and spermatogenesis in reproductive organs (PubMed:[407105](#), PubMed:[8220432](#)).

#### Cellular Location

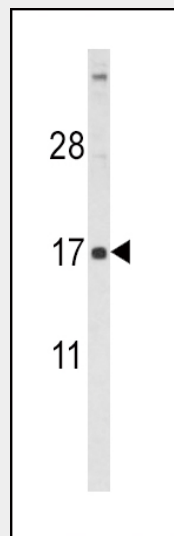
Secreted. Note=Efficient secretion requires dimerization with CGA

### FSHB Antibody (Center T70) - Protocols

Provided below are standard protocols that you may find useful for product applications.

- [Western Blot](#)
- [Blocking Peptides](#)
- [Dot Blot](#)
- [Immunohistochemistry](#)
- [Immunofluorescence](#)
- [Immunoprecipitation](#)
- [Flow Cytometry](#)
- [Cell Culture](#)

### FSHB Antibody (Center T70) - Images



Western blot analysis of FSHB Antibody (Center T70) (Cat. #AP6797c) in HL60 cell line lysates (35ug/lane). FSHB (arrow) was detected using the purified Pab.

### FSHB Antibody (Center T70) - Background

FSHB stimulates development of follicle and spermatogenesis in the reproductive organs.

### FSHB Antibody (Center T70) - References

Grigороva,M., et.al., J. Clin. Endocrinol. Metab. (2009)