

WSB2 Antibody (C-term)
Purified Rabbit Polyclonal Antibody (Pab)
Catalog # AP6853b**Specification**

WSB2 Antibody (C-term) - Product Information

Application	WB,E
Primary Accession	Q9NYS7
Other Accession	O54929 , Q0V8J1
Reactivity	Human
Predicted	Bovine, Mouse
Host	Rabbit
Clonality	Polyclonal
Isotype	Rabbit IgG
Calculated MW	45286
Antigen Region	375-404

WSB2 Antibody (C-term) - Additional Information**Gene ID** 55884**Other Names**

WD repeat and SOCS box-containing protein 2, WSB-2, CS box-containing WD protein, WSB2

Target/Specificity

This WSB2 antibody is generated from rabbits immunized with a KLH conjugated synthetic peptide between 375-404 amino acids from the C-terminal region of human WSB2.

Dilution

WB~~1:1000

Format

Purified polyclonal antibody supplied in PBS with 0.09% (W/V) sodium azide. This antibody is purified through a protein A column, followed by peptide affinity purification.

Storage

Maintain refrigerated at 2-8°C for up to 2 weeks. For long term storage store at -20°C in small aliquots to prevent freeze-thaw cycles.

Precautions

WSB2 Antibody (C-term) is for research use only and not for use in diagnostic or therapeutic procedures.

WSB2 Antibody (C-term) - Protein Information**Name** WSB2**Function** May be a substrate-recognition component of a SCF-like ECS (Elongin-Cullin-SOCS-box

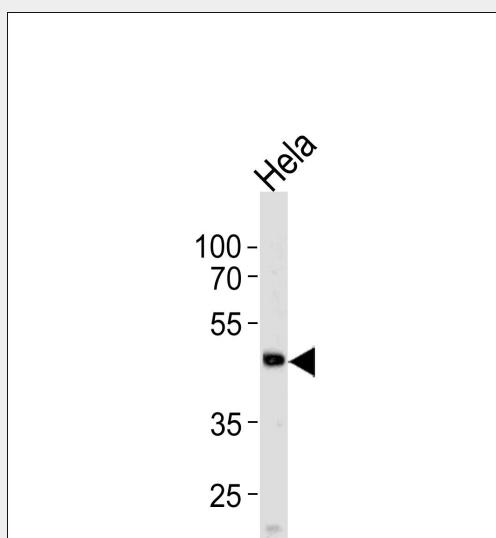
protein) E3 ubiquitin ligase complex which mediates the ubiquitination and subsequent proteasomal degradation of target proteins.

WSB2 Antibody (C-term) - Protocols

Provided below are standard protocols that you may find useful for product applications.

- [Western Blot](#)
- [Blocking Peptides](#)
- [Dot Blot](#)
- [Immunohistochemistry](#)
- [Immunofluorescence](#)
- [Immunoprecipitation](#)
- [Flow Cytometry](#)
- [Cell Culture](#)

WSB2 Antibody (C-term) - Images



Western blot analysis of lysate from HeLa cell line, using WSB2 Antibody (C-term)(Cat. #AP6853b). AP6853b was diluted at 1:1000 at each lane. A goat anti-rabbit IgG H&L(HRP) at 1:5000 dilution was used as the secondary antibody. Lysate at 35ug per lane.

WSB2 Antibody (C-term) - Background

WSB2 is a member of the WD-protein subfamily. This protein contains five WD-repeats spanning most of the protein and an SOCS box in the C-terminus. The SOCS box may act as a bridge between specific substrate-binding domains and E3 ubiquitin protein ligases.

WSB2 Antibody (C-term) - References

Kile,B.T., et.al., Trends Biochem. Sci. 27 (5), 235-241 (2002)