

**ECE-1 Antibody (C-term)**  
**Affinity Purified Rabbit Polyclonal Antibody (Pab)**  
**Catalog # AP6855b****Specification**

---

**ECE-1 Antibody (C-term) - Product Information**

Application	WB, IHC-P, FC,E
Primary Accession	<a href="#">P42892</a>
Other Accession	<a href="#">P42893</a> , <a href="#">Q4PZA2</a> , <a href="#">P42891</a>
Reactivity	Human
Predicted	Bovine, Mouse, Rat
Host	Rabbit
Clonality	Polyclonal
Isotype	Rabbit IgG
Antigen Region	528-556

**ECE-1 Antibody (C-term) - Additional Information****Gene ID** 1889**Other Names**

Endothelin-converting enzyme 1, ECE-1, ECE1

**Target/Specificity**

This ECE-1 antibody is generated from rabbits immunized with a KLH conjugated synthetic peptide between 528-556 amino acids of human ECE-1.

**Dilution**

WB~~1:1000  
IHC-P~~1:50~100  
FC~~1:10~50

**Format**

Purified polyclonal antibody supplied in PBS with 0.09% (W/V) sodium azide. This antibody is purified through a protein A column, followed by peptide affinity purification.

**Storage**

Maintain refrigerated at 2-8°C for up to 2 weeks. For long term storage store at -20°C in small aliquots to prevent freeze-thaw cycles.

**Precautions**

ECE-1 Antibody (C-term) is for research use only and not for use in diagnostic or therapeutic procedures.

**ECE-1 Antibody (C-term) - Protein Information****Name** ECE1

**Function** Converts big endothelin-1 to endothelin-1.

**Cellular Location**

Cell membrane; Single-pass type II membrane protein

**Tissue Location**

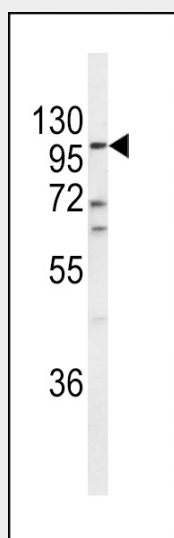
All isoforms are expressed in umbilical vein endothelial cells, polynuclear neutrophils, fibroblasts, atrium cardiomyocytes and ventricles. Isoforms A, B and C are also expressed in placenta, lung, heart, adrenal gland and pheochromocytoma; isoforms A and C in liver, testis and small intestine; isoform B, C and D in endothelial cells and umbilical vein smooth muscle cells; isoforms C and D in saphenous vein cells, and isoform C in kidney

**ECE-1 Antibody (C-term) - Protocols**

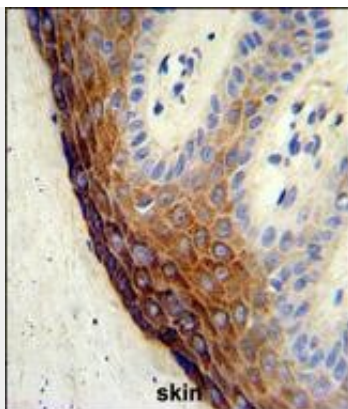
Provided below are standard protocols that you may find useful for product applications.

- [Western Blot](#)
- [Blocking Peptides](#)
- [Dot Blot](#)
- [Immunohistochemistry](#)
- [Immunofluorescence](#)
- [Immunoprecipitation](#)
- [Flow Cytometry](#)
- [Cell Culture](#)

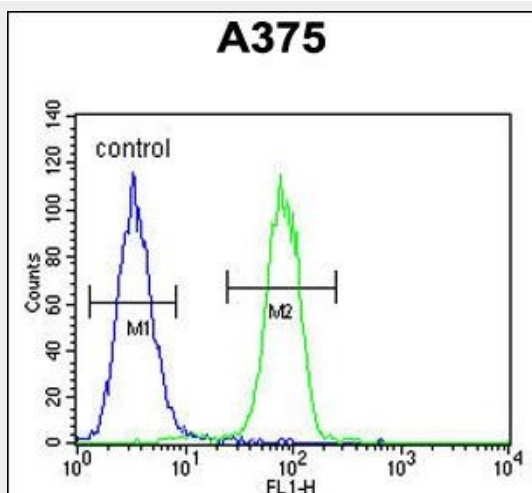
**ECE-1 Antibody (C-term) - Images**



Western blot analysis of ECE-1 Antibody (C-term) (Cat. #AP6855b) in A2058 cell line lysates (35ug/lane). ECE-1 (arrow) was detected using the purified Pab.



Formalin-fixed and paraffin-embedded human skin tissue reacted with ECE-1 Antibody (C-term), which was peroxidase-conjugated to the secondary antibody, followed by DAB staining. This data demonstrates the use of this antibody for immunohistochemistry; clinical relevance has not been evaluated.



ECE-1 Antibody (C-term) (Cat. #AP6855b) flow cytometric analysis of A375 cells (right histogram) compared to a negative control cell (left histogram). FITC-conjugated goat-anti-rabbit secondary antibodies were used for the analysis.

#### **ECE-1 Antibody (C-term) - Background**

ECE-1 is involved in proteolytic processing of endothelin precursors to biologically active peptides.

#### **ECE-1 Antibody (C-term) - References**

Cottrell, G.S., et al., J. Biol. Chem. 284 (33), 22411-22425 (2009)