

**ECE1 Antibody (Center)**  
**Affinity Purified Rabbit Polyclonal Antibody (Pab)**  
**Catalog # AP6855d****Specification**

---

**ECE1 Antibody (Center) - Product Information**

Application	WB, IHC-P,E
Primary Accession	<a href="#">P42892</a>
Other Accession	<a href="#">P42893</a> , <a href="#">Q4PZA2</a> , <a href="#">P42891</a>
Reactivity	Human
Predicted	Bovine, Mouse, Rat
Host	Rabbit
Clonality	Polyclonal
Isotype	Rabbit IgG
Calculated MW	87164
Antigen Region	391-420

**ECE1 Antibody (Center) - Additional Information****Gene ID** 1889**Other Names**

Endothelin-converting enzyme 1, ECE-1, ECE1

**Target/Specificity**

This ECE1 antibody is generated from rabbits immunized with a KLH conjugated synthetic peptide between 391-420 amino acids from the Central region of human ECE1.

**Dilution**

WB~~1:1000

IHC-P~~1:50~100

**Format**

Purified polyclonal antibody supplied in PBS with 0.09% (W/V) sodium azide. This antibody is purified through a protein A column, followed by peptide affinity purification.

**Storage**

Maintain refrigerated at 2-8°C for up to 2 weeks. For long term storage store at -20°C in small aliquots to prevent freeze-thaw cycles.

**Precautions**

ECE1 Antibody (Center) is for research use only and not for use in diagnostic or therapeutic procedures.

**ECE1 Antibody (Center) - Protein Information****Name** ECE1

**Function** Converts big endothelin-1 to endothelin-1.

**Cellular Location**

Cell membrane; Single-pass type II membrane protein

**Tissue Location**

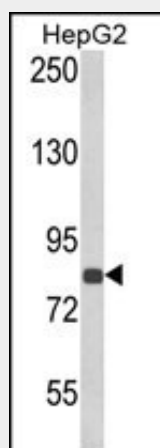
All isoforms are expressed in umbilical vein endothelial cells, polynuclear neutrophils, fibroblasts, atrium cardiomyocytes and ventricles. Isoforms A, B and C are also expressed in placenta, lung, heart, adrenal gland and pheochromocytoma; isoforms A and C in liver, testis and small intestine; isoform B, C and D in endothelial cells and umbilical vein smooth muscle cells; isoforms C and D in saphenous vein cells, and isoform C in kidney

**ECE1 Antibody (Center) - Protocols**

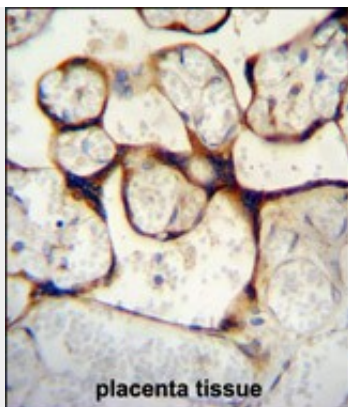
Provided below are standard protocols that you may find useful for product applications.

- [Western Blot](#)
- [Blocking Peptides](#)
- [Dot Blot](#)
- [Immunohistochemistry](#)
- [Immunofluorescence](#)
- [Immunoprecipitation](#)
- [Flow Cytometry](#)
- [Cell Culture](#)

**ECE1 Antibody (Center) - Images**



Western blot analysis of ECE1 Antibody (Center) (Cat. #AP6855d) in HepG2 cell line lysates (35ug/lane). ECE1 (arrow) was detected using the purified Pab.



ECE1 Antibody (Center) (Cat. #AP6855D) immunohistochemistry analysis in formalin fixed and paraffin embedded human placenta tissue followed by peroxidase conjugation of the secondary antibody and DAB staining. This data demonstrates the use of ECE1 Antibody (Center) for immunohistochemistry. Clinical relevance has not been evaluated.

#### **ECE1 Antibody (Center) - Background**

ECE-1 is involved in proteolytic processing of endothelin precursors to biologically active peptides.

#### **ECE1 Antibody (Center) - References**

Cottrell, G.S., et.al., J. Biol. Chem. 284 (33), 22411-22425 (2009)