

GNAS Antibody (Center)
Affinity Purified Rabbit Polyclonal Antibody (Pab)
Catalog # AP6865c**Specification**

GNAS Antibody (Center) - Product Information

Application	WB,E
Primary Accession	Q5JWF2
Reactivity	Human
Host	Rabbit
Clonality	Polyclonal
Isotype	Rabbit IgG
Calculated MW	111025
Antigen Region	640-667

GNAS Antibody (Center) - Additional Information**Gene ID** 2778**Other Names**

Guanine nucleotide-binding protein G(s) subunit alpha isoforms XLas, Adenylate cyclase-stimulating G alpha protein, Extra large alphas protein, XLalphas, GNAS, GNAS1 {ECO:0000303|PubMed:9707596}

Target/Specificity

This GNAS antibody is generated from rabbits immunized with a KLH conjugated synthetic peptide between 640-667 amino acids from the Central region of human GNAS.

Dilution

WB~~1:4000

Format

Purified polyclonal antibody supplied in PBS with 0.09% (W/V) sodium azide. This antibody is purified through a protein A column, followed by peptide affinity purification.

Storage

Maintain refrigerated at 2-8°C for up to 2 weeks. For long term storage store at -20°C in small aliquots to prevent freeze-thaw cycles.

Precautions

GNAS Antibody (Center) is for research use only and not for use in diagnostic or therapeutic procedures.

GNAS Antibody (Center) - Protein Information**Name** GNAS**Synonyms** GNAS1 {ECO:0000303|PubMed:9707596}

Function Guanine nucleotide-binding proteins (G proteins) function as transducers in numerous signaling pathways controlled by G protein- coupled receptors (GPCRs). Signaling involves the activation of adenylyl cyclases, resulting in increased levels of the signaling molecule cAMP. GNAS functions downstream of several GPCRs, including beta-adrenergic receptors. XLas isoforms interact with the same set of receptors as GNAS isoforms (By similarity).

Cellular Location

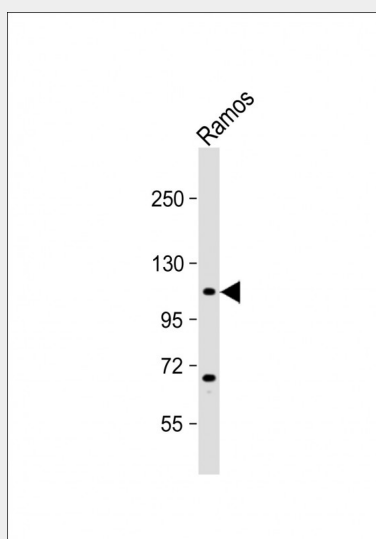
Cell membrane; Peripheral membrane protein {ECO:0000250|UniProtKB:Q63803}. Apical cell membrane

GNAS Antibody (Center) - Protocols

Provided below are standard protocols that you may find useful for product applications.

- [Western Blot](#)
- [Blocking Peptides](#)
- [Dot Blot](#)
- [Immunohistochemistry](#)
- [Immunofluorescence](#)
- [Immunoprecipitation](#)
- [Flow Cytometry](#)
- [Cell Culture](#)

GNAS Antibody (Center) - Images



Anti-GNAS Antibody (Center) at 1:4000 dilution + Ramos whole cell lysate Lysates/proteins at 20 µg per lane. Secondary Goat Anti-Rabbit IgG, (H+L), Peroxidase conjugated at 1/10000 dilution. Predicted band size : 111 kDa Blocking/Dilution buffer: 5% NFDM/TBST.

GNAS Antibody (Center) - Background

Guanine nucleotide-binding proteins (G proteins) are involved as modulators or transducers in various transmembrane signaling systems. The G(s) protein is involved in hormonal regulation of adenylate cyclase: it activates the cyclase in response to beta-adrenergic stimuli. XLas isoforms interact with the same set of receptors as Gnas isoforms.

GNAS Antibody (Center) - References

Liu,C., et.al., Eur Arch Otorhinolaryngol (2009)

Nishihara,E., et.al., Endocr. J. 56 (6), 791-798 (2009)