

**HLA-DRB1 Antibody (N-term)**  
**Affinity Purified Rabbit Polyclonal Antibody (Pab)**  
**Catalog # AP6885a**

**Specification**

---

**HLA-DRB1 Antibody (N-term) - Product Information**

Application	WB, IHC-P, FC,E
Primary Accession	<a href="#">P04229</a>
Other Accession	<a href="#">Q30167</a>
Reactivity	Human
Host	Rabbit
Clonality	Polyclonal
Isotype	Rabbit IgG
Antigen Region	30-58

**HLA-DRB1 Antibody (N-term) - Additional Information**

**Other Names**

HLA class II histocompatibility antigen, DRB1-1 beta chain, MHC class II antigen DRB1\*1, DR-1, DR1, HLA-DRB1

**Target/Specificity**

This HLA-D<sub>1</sub> antibody is generated from rabbits immunized with a KLH conjugated synthetic peptide between 30-58 amino acids of human HLA-D<sub>1</sub>.

**Dilution**

WB~~1:1000  
IHC-P~~1:10~50  
FC~~1:10~50

**Format**

Purified polyclonal antibody supplied in PBS with 0.09% (W/V) sodium azide. This antibody is purified through a protein A column, followed by peptide affinity purification.

**Storage**

Maintain refrigerated at 2-8°C for up to 2 weeks. For long term storage store at -20°C in small aliquots to prevent freeze-thaw cycles.

**Precautions**

HLA-DRB1 Antibody (N-term) is for research use only and not for use in diagnostic or therapeutic procedures.

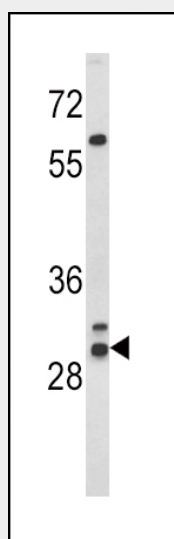
**HLA-DRB1 Antibody (N-term) - Protein Information**

**HLA-DRB1 Antibody (N-term) - Protocols**

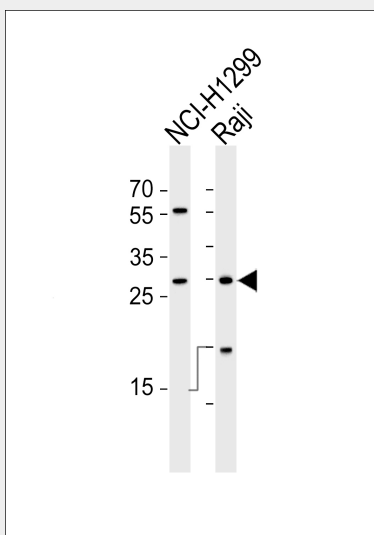
Provided below are standard protocols that you may find useful for product applications.

- [Western Blot](#)
- [Blocking Peptides](#)
- [Dot Blot](#)
- [Immunohistochemistry](#)
- [Immunofluorescence](#)
- [Immunoprecipitation](#)
- [Flow Cytometry](#)
- [Cell Culture](#)

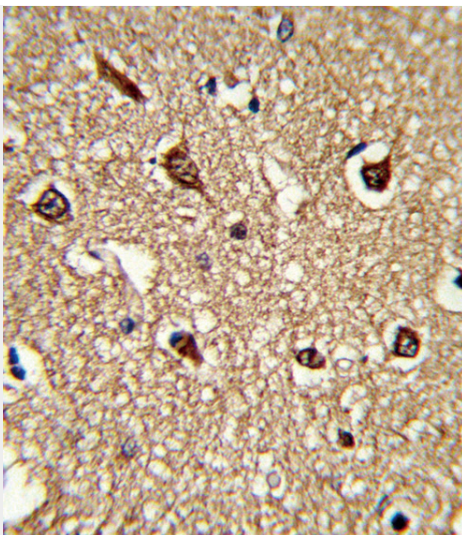
#### HLA-DRB1 Antibody (N-term) - Images



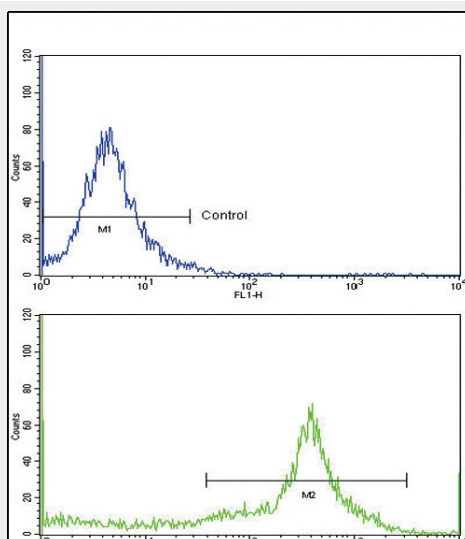
Western blot analysis of HLA-DRB1 Antibody (N-term) (Cat. #AP6885a) in WiDr cell line lysates (35ug/lane). HLA-DRB1 (arrow) was detected using the purified Pab.



Western blot analysis of lysates from NCI-H1299, Raji cell line (from left to right), using HLA-DRB1 Antibody (N-term)(Cat. #AP6885a). AP6885a was diluted at 1:1000 at each lane. A goat anti-rabbit IgG H&L(HRP) at 1:5000 dilution was used as the secondary antibody. Lysates at 35ug per lane.



Formalin-fixed and paraffin-embedded human brain tissue reacted with HLA-DRB1 Antibody (N-term), which was peroxidase-conjugated to the secondary antibody, followed by DAB staining. This data demonstrates the use of this antibody for immunohistochemistry; clinical relevance has not been evaluated.



Flow cytometric analysis of widr cells using HLA-DRB1 Antibody (N-term)(bottom histogram) compared to a negative control cell (top histogram)FITC-conjugated goat-anti-rabbit secondary antibodies were used for the analysis.

### HLA-DRB1 Antibody (N-term) - Background

HLA-DRB1 belongs to the HLA class II beta chain paralogs. The class II molecule is a heterodimer consisting of an alpha (DRA) and a beta chain (DRB), both anchored in the membrane. It plays a central role in the immune system by presenting peptides derived from extracellular proteins. Class II molecules are expressed in antigen presenting cells (APC: B lymphocytes, dendritic cells, macrophages). The beta chain is approximately 26-28 kDa. It is encoded by 6 exons.

### HLA-DRB1 Antibody (N-term) - References

Miyagawa,T., et.al., J. Hum. Genet. (2009)