

**LUC7L Antibody (C-term)**  
**Affinity Purified Rabbit Polyclonal Antibody (Pab)**  
**Catalog # AP6889b**

**Specification**

---

**LUC7L Antibody (C-term) - Product Information**

Application	WB, IHC-P, FC,E
Primary Accession	<a href="#">O9NQ29</a>
Reactivity	Human
Host	Rabbit
Clonality	Polyclonal
Isotype	Rabbit IgG
Calculated MW	43728
Antigen Region	308-336

**LUC7L Antibody (C-term) - Additional Information**

**Gene ID** 55692

**Other Names**

Putative RNA-binding protein Luc7-like 1, Putative SR protein LUC7B1, SR+89, LUC7L, LUC7L1

**Target/Specificity**

This LUC7L antibody is generated from rabbits immunized with a KLH conjugated synthetic peptide between 308-336 amino acids from the C-terminal region of human LUC7L.

**Dilution**

WB~~1:1000  
IHC-P~~1:50~100  
FC~~1:10~50

**Format**

Purified polyclonal antibody supplied in PBS with 0.09% (W/V) sodium azide. This antibody is purified through a protein A column, followed by peptide affinity purification.

**Storage**

Maintain refrigerated at 2-8°C for up to 2 weeks. For long term storage store at -20°C in small aliquots to prevent freeze-thaw cycles.

**Precautions**

LUC7L Antibody (C-term) is for research use only and not for use in diagnostic or therapeutic procedures.

**LUC7L Antibody (C-term) - Protein Information**

**Name** LUC7L

**Synonyms** LUC7L1

**Function** May bind to RNA via its Arg/Ser-rich domain.

**Tissue Location**

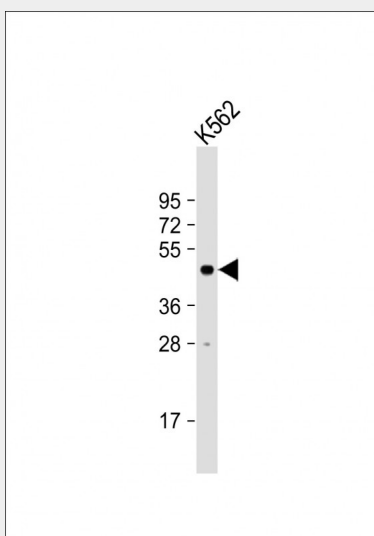
Ubiquitous..

**LUC7L Antibody (C-term) - Protocols**

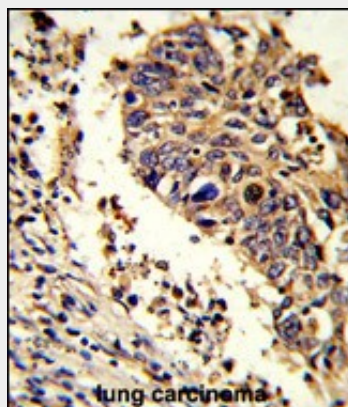
Provided below are standard protocols that you may find useful for product applications.

- [Western Blot](#)
- [Blocking Peptides](#)
- [Dot Blot](#)
- [Immunohistochemistry](#)
- [Immunofluorescence](#)
- [Immunoprecipitation](#)
- [Flow Cytometry](#)
- [Cell Culture](#)

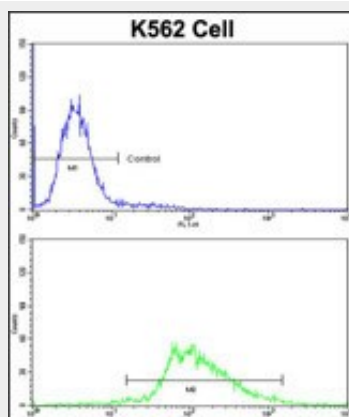
**LUC7L Antibody (C-term) - Images**



Anti-LUC7L Antibody (C-term) at 1:1000 dilution + K562 whole cell lysate Lysates/proteins at 20 µg per lane. Secondary Goat Anti-Rabbit IgG, (H+L), Peroxidase conjugated at 1/10000 dilution. Predicted band size : 44 kDa Blocking/Dilution buffer: 5% NFDm/TBST.



Formalin-fixed and paraffin-embedded human lung carcinoma reacted with LUC7L Antibody (C-term), which was peroxidase-conjugated to the secondary antibody, followed by DAB staining. This data demonstrates the use of this antibody for immunohistochemistry; clinical relevance has not been evaluated.



Flow cytometric analysis of K562 cells using LUC7L Antibody (C-term)(bottom histogram) compared to a negative control cell (top histogram) FITC-conjugated goat-anti-rabbit secondary antibodies were used for the analysis.

#### **LUC7L Antibody (C-term) - Background**

LUC7L may bind to RNA via its Arg/Ser-rich domain.

#### **LUC7L Antibody (C-term) - References**

Ewing, R.M., et.al., Mol. Syst. Biol. 3, 89 (2007)