

**RPS15 Antibody (N-term)**  
**Affinity Purified Rabbit Polyclonal Antibody (Pab)**  
**Catalog # AP6914a**

**Specification**

---

**RPS15 Antibody (N-term) - Product Information**

|                   |   |
|-------------------|---|
| Application       | WB, IHC-P, FC,E   |
| Primary Accession | <a href="#">P62841</a>  |
| Other Accession   | <a href="#">P62845</a> , <a href="#">P62844</a> , <a href="#">P62843</a> , <a href="#">P62846</a> , <a href="#">Q56K10</a> , <a href="#">G1U0Q2</a> |
| Reactivity        | Human   |
| Predicted         | Bovine, Chicken, Mouse, Pig, Rabbit, Rat  |
| Host              | Rabbit  |
| Clonality         | Polyclonal  |
| Isotype           | Rabbit IgG  |
| Antigen Region    | 1-30  |

**RPS15 Antibody (N-term) - Additional Information**

**Gene ID** 6209

**Other Names**

40S ribosomal protein S15, RIG protein, RPS15, RIG

**Target/Specificity**

This RPS15 antibody is generated from rabbits immunized with a KLH conjugated synthetic peptide between 1-30 amino acids from the N-terminal region of human RPS15.

**Dilution**

WB~~1:1000  
IHC-P~~1:50~100  
FC~~1:10~50

**Format**

Purified polyclonal antibody supplied in PBS with 0.09% (W/V) sodium azide. This antibody is purified through a protein A column, followed by peptide affinity purification.

**Storage**

Maintain refrigerated at 2-8°C for up to 2 weeks. For long term storage store at -20°C in small aliquots to prevent freeze-thaw cycles.

**Precautions**

RPS15 Antibody (N-term) is for research use only and not for use in diagnostic or therapeutic procedures.

**RPS15 Antibody (N-term) - Protein Information**

**Name** RPS15

## Synonyms RIG

**Function** Component of the small ribosomal subunit (PubMed:[23636399](#)). The ribosome is a large ribonucleoprotein complex responsible for the synthesis of proteins in the cell (PubMed:[23636399](#)).

## Cellular Location

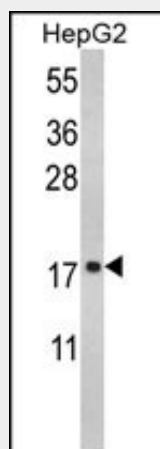
Cytoplasm.

## RPS15 Antibody (N-term) - Protocols

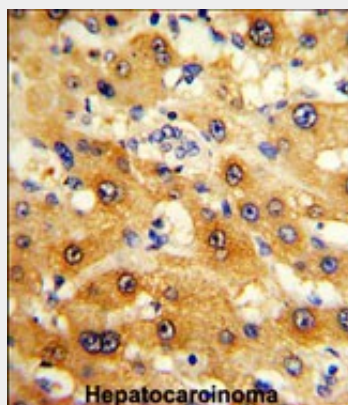
Provided below are standard protocols that you may find useful for product applications.

- [Western Blot](#)
- [Blocking Peptides](#)
- [Dot Blot](#)
- [Immunohistochemistry](#)
- [Immunofluorescence](#)
- [Immunoprecipitation](#)
- [Flow Cytometry](#)
- [Cell Culture](#)

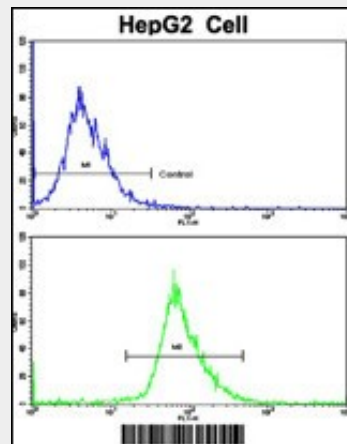
## RPS15 Antibody (N-term) - Images



Western blot analysis of RPS15 Antibody (N-term) (Cat. #AP6914a) in HepG2 cell line lysates (35ug/lane). RPS15 (arrow) was detected using the purified Pab.



Formalin-fixed and paraffin-embedded human hepatocarcinoma reacted with RPS15 Antibody (N-term), which was peroxidase-conjugated to the secondary antibody, followed by DAB staining. This data demonstrates the use of this antibody for immunohistochemistry; clinical relevance has not been evaluated.



Flow cytometric analysis of HepG2 cells using RPS15 Antibody (N-term)(bottom histogram) compared to a negative control cell (top histogram). FITC-conjugated goat-anti-rabbit secondary antibodies were used for the analysis.

#### **RPS15 Antibody (N-term) - Background**

Ribosomes, the organelles that catalyze protein synthesis, consist of a small 40S subunit and a large 60S subunit. Together these subunits are composed of 4 RNA species and approximately 80 structurally distinct proteins. RPS15 is a component of the 40S subunit. The protein belongs to the S19P family of ribosomal proteins. It is located in the cytoplasm.

#### **RPS15 Antibody (N-term) - References**

Yu,Y., et.al., Protein Sci. 14 (6), 1438-1446 (2005)

#### **RPS15 Antibody (N-term) - Citations**

- [Ribosomal proteins RPL37, RPS15 and RPS20 regulate the Mdm2-p53-MdmX network.](#)