

**SRP72 Antibody (Center)**  
**Affinity Purified Rabbit Polyclonal Antibody (Pab)**  
**Catalog # AP6916c****Specification**

---

**SRP72 Antibody (Center) - Product Information**

Application	IF, WB, IHC-P, FC,E
Primary Accession	<a href="#">O76094</a>
Reactivity	Human
Host	Rabbit
Clonality	Polyclonal
Isotype	Rabbit IgG
Calculated MW	74606
Antigen Region	119-148

**SRP72 Antibody (Center) - Additional Information****Gene ID** 6731**Other Names**

Signal recognition particle subunit SRP72, SRP72, Signal recognition particle 72 kDa protein, SRP72

**Target/Specificity**

This SRP72 antibody is generated from rabbits immunized with a KLH conjugated synthetic peptide between 119-148 amino acids from the Central region of human SRP72.

**Dilution**

IF~~1:10~50  
WB~~1:1000  
IHC-P~~1:50~100  
FC~~1:10~50

**Format**

Purified polyclonal antibody supplied in PBS with 0.09% (W/V) sodium azide. This antibody is purified through a protein A column, followed by peptide affinity purification.

**Storage**

Maintain refrigerated at 2-8°C for up to 2 weeks. For long term storage store at -20°C in small aliquots to prevent freeze-thaw cycles.

**Precautions**

SRP72 Antibody (Center) is for research use only and not for use in diagnostic or therapeutic procedures.

**SRP72 Antibody (Center) - Protein Information****Name** SRP72

**Function** Component of the signal recognition particle (SRP) complex, a ribonucleoprotein complex that mediates the cotranslational targeting of secretory and membrane proteins to the endoplasmic reticulum (ER) (PubMed:[34020957](#)). The SRP complex interacts with the signal sequence in nascent secretory and membrane proteins and directs them to the membrane of the ER (PubMed:[34020957](#)). The SRP complex targets the ribosome-nascent chain complex to the SRP receptor (SR), which is anchored in the ER, where SR compaction and GTPase rearrangement drive cotranslational protein translocation into the ER (PubMed:[34020957](#)). Binds the signal recognition particle RNA (7SL RNA) in presence of SRP68 (PubMed:[27899666](#), PubMed:[21073748](#)). Can bind 7SL RNA with low affinity (PubMed:[27899666](#), PubMed:[21073748](#)). The SRP complex possibly participates in the elongation arrest function (By similarity).

#### **Cellular Location**

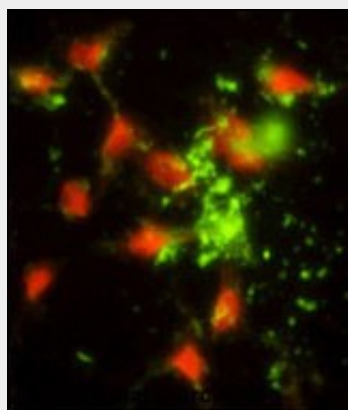
Cytoplasm. Endoplasmic reticulum

### **SRP72 Antibody (Center) - Protocols**

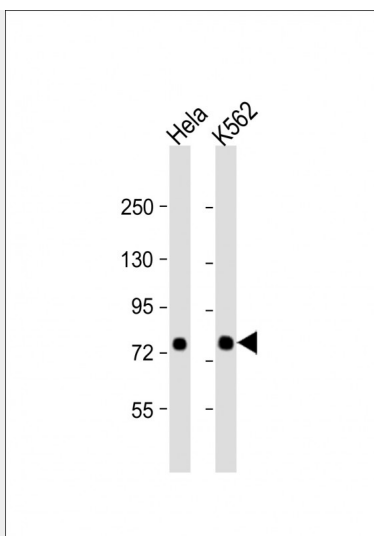
Provided below are standard protocols that you may find useful for product applications.

- [Western Blot](#)
- [Blocking Peptides](#)
- [Dot Blot](#)
- [Immunohistochemistry](#)
- [Immunofluorescence](#)
- [Immunoprecipitation](#)
- [Flow Cytometry](#)
- [Cell Culture](#)

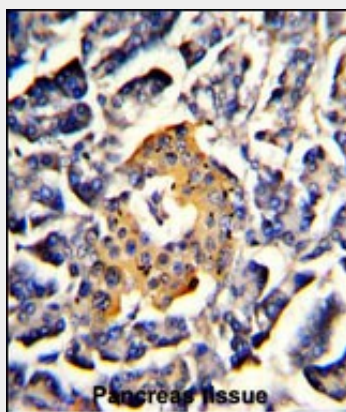
### **SRP72 Antibody (Center) - Images**



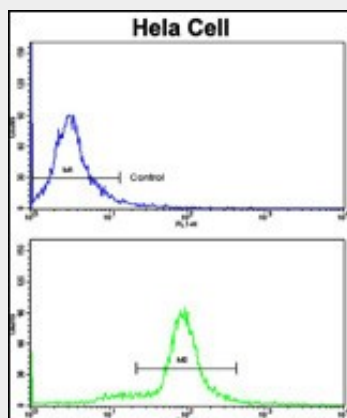
Immunofluorescence analysis of SRP72 Antibody (Center) with hela cells . 0.025 mg/ml primary antibody was followed by FITC-conjugated goat anti-rabbit IgG (whole molecule). FITC emits green fluorescence.Red counterstaining is PI.



All lanes : Anti-SRP72 Antibody (Center) at 1:1000 dilution Lane 1: HeLa whole cell lysate Lane 2: K562 whole cell lysate Lysates/proteins at 20  $\mu$ g per lane. Secondary Goat Anti-Rabbit IgG, (H+L), Peroxidase conjugated at 1/10000 dilution. Predicted band size : 75 kDa Blocking/Dilution buffer: 5% NFDM/TBST.



Formalin-fixed and paraffin-embedded human pancreas with SRP72 Antibody (Center), which was peroxidase-conjugated to the secondary antibody, followed by DAB staining. This data demonstrates the use of this antibody for immunohistochemistry; clinical relevance has not been evaluated.



Flow cytometric analysis of hela cells using SRP72 Antibody (Center)(bottom histogram) compared to a negative control cell (top histogram). FITC-conjugated goat-anti-rabbit secondary antibodies were used for the analysis.

**SRP72 Antibody (Center) - Background**

Signal-recognition-particle assembly has a crucial role in targeting secretory proteins to the rough endoplasmic reticulum membrane. It binds the 7S RNA only in presence of SRP68. This ribonucleoprotein complex might interact directly with the docking protein in the ER membrane and possibly participate in the elongation arrest function.

**SRP72 Antibody (Center) - References**

Utz,P.J., et.al., J. Biol. Chem. 273 (52), 35362-35370 (1998)