

TGM4 Antibody (Center)
Affinity Purified Rabbit Polyclonal Antibody (Pab)
Catalog # AP6918c**Specification**

TGM4 Antibody (Center) - Product Information

Application	WB, IHC-P, FC,E
Primary Accession	P49221
Reactivity	Human, Mouse
Host	Rabbit
Clonality	Polyclonal
Isotype	Rabbit IgG
Calculated MW	77145
Antigen Region	135-164

TGM4 Antibody (Center) - Additional Information**Gene ID** 7047**Other Names**

Protein-glutamine gamma-glutamyltransferase 4, Fibrinolyase, Prostate transglutaminase, Prostate-specific transglutaminase, Transglutaminase P, TG(P), TGP, TGase P, Transglutaminase-4, TGase-4, TGM4

Target/Specificity

This TGM4 antibody is generated from rabbits immunized with a KLH conjugated synthetic peptide between 135-164 amino acids from the Central region of human TGM4.

Dilution

WB~~1:1000-1:2000
IHC-P~~1:50~100
FC~~1:10~50

Format

Purified polyclonal antibody supplied in PBS with 0.09% (W/V) sodium azide. This antibody is purified through a protein A column, followed by peptide affinity purification.

Storage

Maintain refrigerated at 2-8°C for up to 2 weeks. For long term storage store at -20°C in small aliquots to prevent freeze-thaw cycles.

Precautions

TGM4 Antibody (Center) is for research use only and not for use in diagnostic or therapeutic procedures.

TGM4 Antibody (Center) - Protein Information**Name** TGM4

Function Associated with the mammalian reproductive process. Catalyzes the cross-linking of proteins and the conjugation of polyamines to specific proteins in the seminal tract.

Tissue Location

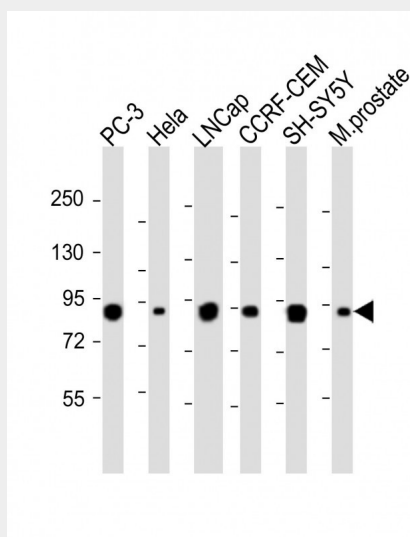
Prostate.

TGM4 Antibody (Center) - Protocols

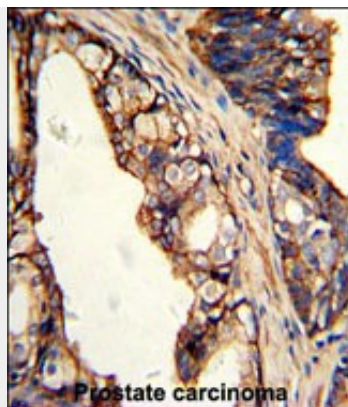
Provided below are standard protocols that you may find useful for product applications.

- [Western Blot](#)
- [Blocking Peptides](#)
- [Dot Blot](#)
- [Immunohistochemistry](#)
- [Immunofluorescence](#)
- [Immunoprecipitation](#)
- [Flow Cytometry](#)
- [Cell Culture](#)

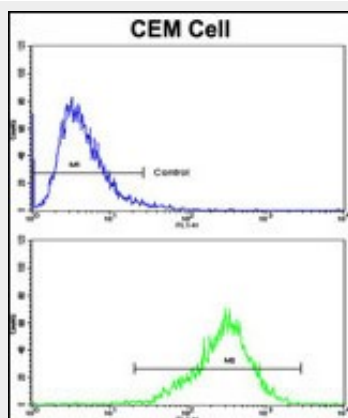
TGM4 Antibody (Center) - Images



All lanes : Anti-TGM4 Antibody (Center) at 1:1000-1:2000 dilution Lane 1: PC-3 whole cell lysate Lane 2: Hela whole cell lysate Lane 3: LNCap whole cell lysate Lane 4: CCRF-CEM whole cell lysate Lane 5: SH-SY5Y whole cell lysate Lane 6: Mouse prostate whole tissue lysate Lysates/proteins at 20 µg per lane. Secondary Goat Anti-Rabbit IgG, (H+L), Peroxidase conjugated at 1/10000 dilution. Predicted band size : 77 kDa Blocking/Dilution buffer: 5% NFDM/TBST.



Formalin-fixed and paraffin-embedded human prostate carcinoma with TGM4 Antibody (Center), which was peroxidase-conjugated to the secondary antibody, followed by DAB staining. This data demonstrates the use of this antibody for immunohistochemistry; clinical relevance has not been evaluated.



Flow cytometric analysis of CEM cells using TGM4 Antibody (Center)(bottom histogram) compared to a negative control cell (top histogram). FITC-conjugated goat-anti-rabbit secondary antibodies were used for the analysis.

TGM4 Antibody (Center) - Background

TGM4 is associated with the mammalian reproductive process and catalyzes the cross-linking of proteins and the conjugation of polyamines to specific proteins in the seminal tract.

TGM4 Antibody (Center) - References

Jiang, W.G., et.al., Microvasc. Res. 77 (2), 150-157 (2009)