

TMPRSS3 Antibody (Center)
Affinity Purified Rabbit Polyclonal Antibody (Pab)
Catalog # AP6936C**Specification**

TMPRSS3 Antibody (Center) - Product Information

Application	IF, WB,E
Primary Accession	P57727
Reactivity	Human
Host	Rabbit
Clonality	Polyclonal
Isotype	Rabbit IgG
Calculated MW	49405
Antigen Region	272-300

TMPRSS3 Antibody (Center) - Additional Information**Gene ID** 64699**Other Names**

Transmembrane protease serine 3, 3421-, Serine protease TADG-12, Tumor-associated differentially-expressed gene 12 protein, TMPRSS3, ECHOS1, TADG12

Target/Specificity

This TMPRSS3 antibody is generated from rabbits immunized with a KLH conjugated synthetic peptide between 272-300 amino acids from the Central region of human TMPRSS3.

Dilution

IF~~1:10~50

WB~~1:1000

Format

Purified polyclonal antibody supplied in PBS with 0.09% (W/V) sodium azide. This antibody is purified through a protein A column, followed by peptide affinity purification.

Storage

Maintain refrigerated at 2-8°C for up to 2 weeks. For long term storage store at -20°C in small aliquots to prevent freeze-thaw cycles.

Precautions

TMPRSS3 Antibody (Center) is for research use only and not for use in diagnostic or therapeutic procedures.

TMPRSS3 Antibody (Center) - Protein Information**Name** TMPRSS3**Synonyms** ECHOS1, TADG12

Function Probable serine protease that plays a role in hearing. Acts as a permissive factor for cochlear hair cell survival and activation at the onset of hearing and is required for saccular hair cell survival (By similarity). Activates ENaC (in vitro).

Cellular Location

Endoplasmic reticulum membrane; Single-pass type II membrane protein

Tissue Location

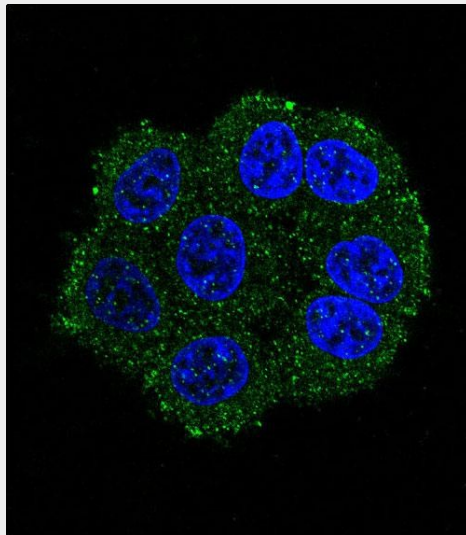
Expressed in many tissues including fetal cochlea. Isoform T is found at increased levels in some carcinomas

TMPRSS3 Antibody (Center) - Protocols

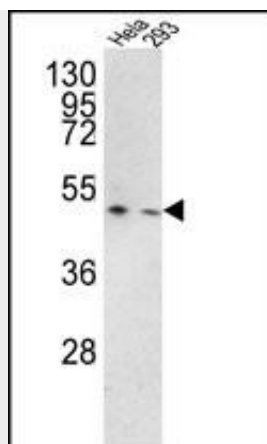
Provided below are standard protocols that you may find useful for product applications.

- [Western Blot](#)
- [Blocking Peptides](#)
- [Dot Blot](#)
- [Immunohistochemistry](#)
- [Immunofluorescence](#)
- [Immunoprecipitation](#)
- [Flow Cytometry](#)
- [Cell Culture](#)

TMPRSS3 Antibody (Center) - Images



Confocal immunofluorescent analysis of TMPRSS3 Antibody (Center)(Cat#AP6936c) with HeLa cell followed by Alexa Fluor 488-conjugated goat anti-rabbit IgG (green). DAPI was used to stain the cell nuclear (blue).



Western blot analysis of TMPRSS3 Antibody (Center) (Cat. #AP6936c) in HeLa, 293 cell line lysates (35ug/lane). TMPRSS3 (arrow) was detected using the purified Pab.

TMPRSS3 Antibody (Center) - Background

TMPRSS3 belongs to the serine protease family. This protein contains a serine protease domain, a transmembrane domain, a LDL receptor-like domain, and a scavenger receptor cysteine-rich domain. Serine proteases are known to be involved in a variety of biological processes, whose malfunction often leads to human diseases and disorders.

TMPRSS3 Antibody (Center) - References

Elbracht,M., et.al., J. Med. Genet. 44 (6), E81 (2007)