

**IGFBP4 Antibody (N-term)**  
**Affinity Purified Rabbit Polyclonal Antibody (Pab)**  
**Catalog # AP6941a****Specification**

---

**IGFBP4 Antibody (N-term) - Product Information**

Application	WB, FC,E
Primary Accession	<a href="#">P22692</a>
Other Accession	<a href="#">P24854</a> , <a href="#">Q05716</a>
Reactivity	Human, Mouse, Rat
Predicted	Bovine, Pig
Host	Rabbit
Clonality	Polyclonal
Isotype	Rabbit IgG
Antigen Region	66-92

**IGFBP4 Antibody (N-term) - Additional Information****Gene ID** 3487**Other Names**

Insulin-like growth factor-binding protein 4, IBP-4, IGF-binding protein 4, IGFBP-4, IGFBP4, IBP4

**Target/Specificity**

This IGFBP4 antibody is generated from rabbits immunized with a KLH conjugated synthetic peptide between 66-92 amino acids from the N-terminal region of human IGFBP4.

**Dilution**

WB~~1:2000

FC~~1:25

**Format**

Purified polyclonal antibody supplied in PBS with 0.09% (W/V) sodium azide. This antibody is purified through a protein A column, followed by peptide affinity purification.

**Storage**

Maintain refrigerated at 2-8°C for up to 2 weeks. For long term storage store at -20°C in small aliquots to prevent freeze-thaw cycles.

**Precautions**

IGFBP4 Antibody (N-term) is for research use only and not for use in diagnostic or therapeutic procedures.

**IGFBP4 Antibody (N-term) - Protein Information****Name** IGFBP4**Synonyms** IBP4

**Function** IGF-binding proteins prolong the half-life of the IGFs and have been shown to either inhibit or stimulate the growth promoting effects of the IGFs on cell culture. They alter the interaction of IGFs with their cell surface receptors.

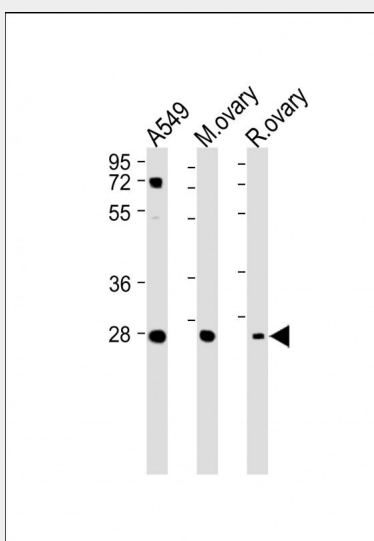
**Cellular Location**  
Secreted.

### IGFBP4 Antibody (N-term) - Protocols

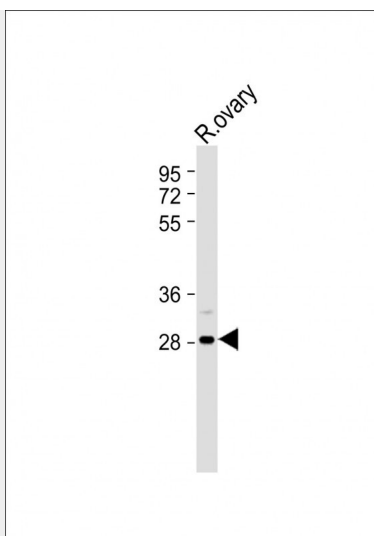
Provided below are standard protocols that you may find useful for product applications.

- [Western Blot](#)
- [Blocking Peptides](#)
- [Dot Blot](#)
- [Immunohistochemistry](#)
- [Immunofluorescence](#)
- [Immunoprecipitation](#)
- [Flow Cytometry](#)
- [Cell Culture](#)

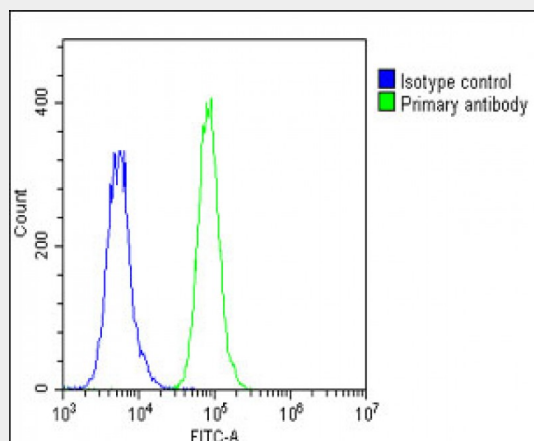
### IGFBP4 Antibody (N-term) - Images



All lanes : Anti-IGFBP4 Antibody (N-term) at 1:2000 dilution Lane 1: A549 whole cell lysate Lane 2: Mouse ovary lysate Lane 3: Rat ovary lysate Lysates/proteins at 20 µg per lane. Secondary Goat Anti-Rabbit IgG, (H+L), Peroxidase conjugated at 1/10000 dilution. Predicted band size : 28 kDa Blocking/Dilution buffer: 5% NFDM/TBST.



Anti-IGFBP4 Antibody (N-term) at 1:2000 dilution + Rat ovary lysate Lysates/proteins at 20 µg per lane. Secondary Goat Anti-Rabbit IgG, (H+L), Peroxidase conjugated at 1/10000 dilution. Predicted band size : 28 kDa Blocking/Dilution buffer: 5% NFDM/TBST.



Overlay histogram showing A549 cells stained with AP6941a (green line). The cells were fixed with 2% paraformaldehyde (10 min) and then permeabilized with 90% methanol for 10 min. The cells were then incubated in 2% bovine serum albumin to block non-specific protein-protein interactions followed by the antibody (AP6941a, 1:25 dilution) for 60 min at 37°C. The secondary antibody used was Goat-Anti-Rabbit IgG, DyLight® 488 Conjugated Highly Cross-Adsorbed (1583138) at 1/200 dilution for 40 min at 37°C. Isotype control antibody (blue line) was rabbit IgG1 (1 µg/1x10<sup>6</sup> cells) used under the same conditions. Acquisition of >10,000 events was performed.

### IGFBP4 Antibody (N-term) - Background

IGFBP4 has an IGFBP domain and a thyroglobulin type-I domain. The protein binds both insulin-like growth factors (IGFs) I and II and circulates in the plasma in both glycosylated and non-glycosylated forms. Binding of this protein prolongs the half-life of the IGFs and alters their interaction with cell surface receptors.

### IGFBP4 Antibody (N-term) - References

Durai, R., et al., Colorectal Dis 9 (7), 625-631 (2007)  
Laursen, L.S., et al., Mol. Endocrinol. 21 (5), 1246-1257 (2007)