

MSRB2 Antibody (Center)
Affinity Purified Rabbit Polyclonal Antibody (Pab)
Catalog # AP6980c**Specification**

MSRB2 Antibody (Center) - Product Information

Application	WB, IHC-P, FC,E
Primary Accession	Q9Y3D2
Reactivity	Human
Host	Rabbit
Clonality	Polyclonal
Isotype	Rabbit IgG
Calculated MW	19536
Antigen Region	44-73

MSRB2 Antibody (Center) - Additional Information**Gene ID** 22921**Other Names**

Methionine-R-sulfoxide reductase B2, mitochondrial, MsrB2, 184-, MSRB2, CBS-1, MSRB

Target/Specificity

This MSRB2 antibody is generated from rabbits immunized with a KLH conjugated synthetic peptide between 44-73 amino acids from the Central region of human MSRB2.

Dilution

WB~~1:1000
IHC-P~~1:50~100
FC~~1:10~50

Format

Purified polyclonal antibody supplied in PBS with 0.09% (W/V) sodium azide. This antibody is purified through a protein A column, followed by peptide affinity purification.

Storage

Maintain refrigerated at 2-8°C for up to 2 weeks. For long term storage store at -20°C in small aliquots to prevent freeze-thaw cycles.

Precautions

MSRB2 Antibody (Center) is for research use only and not for use in diagnostic or therapeutic procedures.

MSRB2 Antibody (Center) - Protein Information**Name** MSRB2**Synonyms** CBS-1, MSRB

Function Methionine-sulfoxide reductase that specifically reduces methionine (R)-sulfoxide back to methionine. While in many cases, methionine oxidation is the result of random oxidation following oxidative stress, methionine oxidation is also a post-translational modification that takes place on specific residue. Upon oxidative stress, may play a role in the preservation of mitochondrial integrity by decreasing the intracellular reactive oxygen species build-up through its scavenging role, hence contributing to cell survival and protein maintenance.

Cellular Location

Mitochondrion

Tissue Location

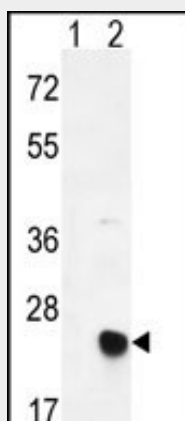
Ubiquitous. Detected in retina, ocular ciliary body, skeletal muscle, heart, colon, bone marrow, cerebellum, small intestine, fetal brain, fetal liver, kidney, spinal cord, lung, placenta and prostate.

MSRB2 Antibody (Center) - Protocols

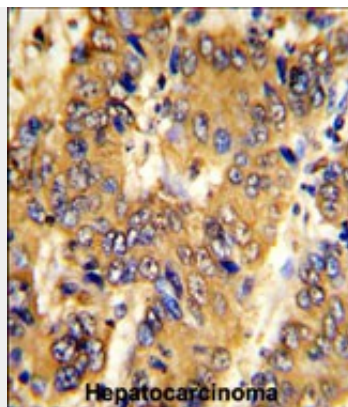
Provided below are standard protocols that you may find useful for product applications.

- [Western Blot](#)
- [Blocking Peptides](#)
- [Dot Blot](#)
- [Immunohistochemistry](#)
- [Immunofluorescence](#)
- [Immunoprecipitation](#)
- [Flow Cytometry](#)
- [Cell Culture](#)

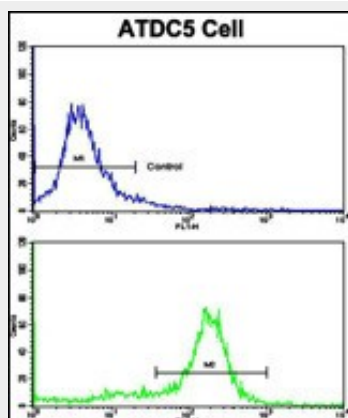
MSRB2 Antibody (Center) - Images



Western blot analysis of MSRB2 (arrow) using rabbit polyclonal MSRB2 Antibody (Center) (Cat. #AP6980c). 293 cell lysates (2 ug/lane) either nontransfected (Lane 1) or transiently transfected (Lane 2) with the MSRB2 gene.



Formalin-fixed and paraffin-embedded human hepatocarcinoma with MSRB2 Antibody (Center), which was peroxidase-conjugated to the secondary antibody, followed by DAB staining. This data demonstrates the use of this antibody for immunohistochemistry; clinical relevance has not been evaluated.



Flow cytometric analysis of ATDC5 cells using MSRB2 Antibody (Center)(bottom histogram) compared to a negative control cell (top histogram). FITC-conjugated goat-anti-rabbit secondary antibodies were used for the analysis.

MSRB2 Antibody (Center) - Background

MSRB2 catalyzes the reduction of free and protein-bound methionine sulfoxide to methionine.

MSRB2 Antibody (Center) - References

Cabreiro,F., et.al., J. Biol. Chem. 283 (24), 16673-16681 (2008)