

HMHA1 Antibody (Center)
Affinity Purified Rabbit Polyclonal Antibody (Pab)
Catalog # AP6985c**Specification**

HMHA1 Antibody (Center) - Product Information

Application	WB, IHC-P, FC,E
Primary Accession	Q92619
Reactivity	Human
Host	Rabbit
Clonality	Polyclonal
Isotype	Rabbit IgG
Calculated MW	124614
Antigen Region	877-903

HMHA1 Antibody (Center) - Additional Information**Gene ID** 23526**Other Names**

Minor histocompatibility protein HA-1, Minor histocompatibility antigen HA-1, mHag HA-1, HMHA1, KIAA0223

Target/Specificity

This HMHA1 antibody is generated from rabbits immunized with a KLH conjugated synthetic peptide between 877-903 amino acids from the Central region of human HMHA1.

DilutionWB~~1:1000
IHC-P~~1:50~100
FC~~1:10~50**Format**

Purified polyclonal antibody supplied in PBS with 0.09% (W/V) sodium azide. This antibody is purified through a protein A column, followed by peptide affinity purification.

Storage

Maintain refrigerated at 2-8°C for up to 2 weeks. For long term storage store at -20°C in small aliquots to prevent freeze-thaw cycles.

Precautions

HMHA1 Antibody (Center) is for research use only and not for use in diagnostic or therapeutic procedures.

HMHA1 Antibody (Center) - Protein Information**Name** ARHGAP45 ([HGNC:17102](#))

Function Contains a GTPase activator for the Rho-type GTPases (RhoGAP) domain that would be able to negatively regulate the actin cytoskeleton as well as cell spreading. However, also contains N-terminally a BAR- domain which is able to play an autoinhibitory effect on this RhoGAP activity.

Cellular Location

Cytoplasm. Cell projection, ruffle membrane

Tissue Location

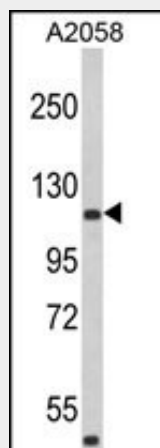
Expressed on cells of the hematopoietic lineage. Detected in dendritic cells and epidermal Langerhans cells. Expressed in peripheral blood mononuclear cells, in all leukemia/lymphoma cell lines. Detected also in some solid tumors and tissues such as cancerous and non-cancerous tissue.

HMHA1 Antibody (Center) - Protocols

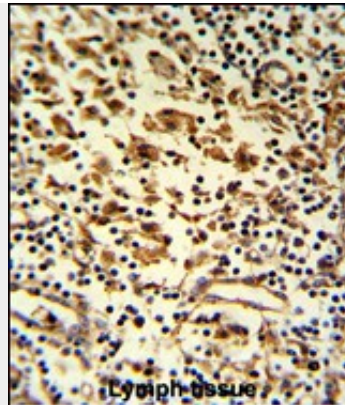
Provided below are standard protocols that you may find useful for product applications.

- [Western Blot](#)
- [Blocking Peptides](#)
- [Dot Blot](#)
- [Immunohistochemistry](#)
- [Immunofluorescence](#)
- [Immunoprecipitation](#)
- [Flow Cytometry](#)
- [Cell Culture](#)

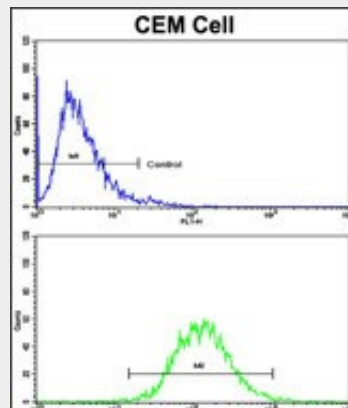
HMHA1 Antibody (Center) - Images



Western blot analysis of HMHA1 Antibody (Center) (Cat. #AP6985c) in A2058 cell line lysates (35ug/lane). HMHA1 (arrow) was detected using the purified Pab.



Formalin-fixed and paraffin-embedded human lymph reacted with HMHA1 Antibody (Center), which was peroxidase-conjugated to the secondary antibody, followed by DAB staining. This data demonstrates the use of this antibody for immunohistochemistry; clinical relevance has not been evaluated.



Flow cytometric analysis of CEM cells using HMHA1 Antibody (Center)(bottom histogram) compared to a negative control cell (top histogram). FITC-conjugated goat-anti-rabbit secondary antibodies were used for the analysis.

HMHA1 Antibody (Center) - Background

The minor histocompatibility antigen (mHags), HA-1 is a immunogenic alloantigen shown to be responsible for graft-versus-host disease (GVHD) in HLA-identical bone marrow transplantation. The antigen has two known alleles resulting in a single amino acid polymorphism. The HA-1H allele encodes histidine, whereas the HA-1R allele encodes arginine.

HMHA1 Antibody (Center) - References

Gillespie,G.,et.al., Hematol. J. 1 (6), 403-410 (2000)