

**SFRP5 Antibody (Center)**  
**Affinity Purified Rabbit Polyclonal Antibody (Pab)**  
**Catalog # AP6991C****Specification**

---

**SFRP5 Antibody (Center) - Product Information**

Application	WB, IHC-P, FC,E
Primary Accession	<a href="#">Q5T4F7</a>
Other Accession	<a href="#">Q9XSC1</a>
Reactivity	Human
Predicted	Bovine
Host	Rabbit
Clonality	Polyclonal
Isotype	Rabbit IgG
Antigen Region	219-248

**SFRP5 Antibody (Center) - Additional Information****Gene ID** 6425**Other Names**

Secreted frizzled-related protein 5, sFRP-5, Frizzled-related protein 1b, FRP-1b, Secreted apoptosis-related protein 3, SARP-3, SFRP5, FRP1B, SARP3

**Target/Specificity**

This SFRP5 antibody is generated from rabbits immunized with a KLH conjugated synthetic peptide between 219-248 amino acids from the Central region of human SFRP5.

**Dilution**

WB~~1:1000  
IHC-P~~1:50~100  
FC~~1:10~50

**Format**

Purified polyclonal antibody supplied in PBS with 0.09% (W/V) sodium azide. This antibody is purified through a protein A column, followed by peptide affinity purification.

**Storage**

Maintain refrigerated at 2-8°C for up to 2 weeks. For long term storage store at -20°C in small aliquots to prevent freeze-thaw cycles.

**Precautions**

SFRP5 Antibody (Center) is for research use only and not for use in diagnostic or therapeutic procedures.

**SFRP5 Antibody (Center) - Protein Information****Name** SFRP5

**Synonyms** FRP1B, SARP3

**Function** Soluble frizzled-related proteins (sFRPS) function as modulators of Wnt signaling through direct interaction with Wnts. They have a role in regulating cell growth and differentiation in specific cell types. SFRP5 may be involved in determining the polarity of photoreceptor, and perhaps, other cells in the retina.

**Cellular Location**  
Secreted.

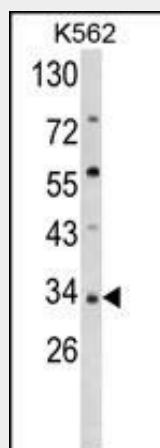
**Tissue Location**

Highly expressed in the retinal pigment epithelium (RPE) and pancreas. Weak expression in heart, liver and muscle

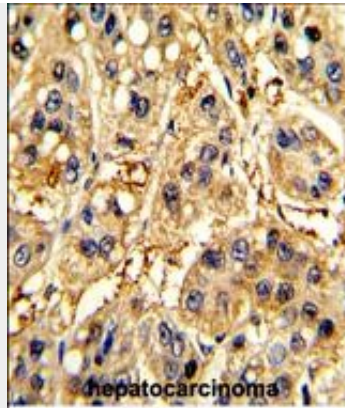
**SFRP5 Antibody (Center) - Protocols**

Provided below are standard protocols that you may find useful for product applications.

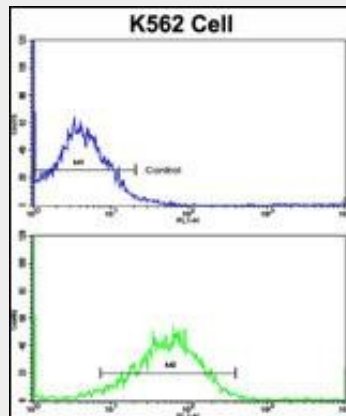
- [Western Blot](#)
- [Blocking Peptides](#)
- [Dot Blot](#)
- [Immunohistochemistry](#)
- [Immunofluorescence](#)
- [Immunoprecipitation](#)
- [Flow Cytometry](#)
- [Cell Culture](#)

**SFRP5 Antibody (Center) - Images**

Western blot analysis of SFRP5 Antibody (Center) (Cat. #AP6991c) in K562 cell line lysates (35ug/lane). SFRP5 (arrow) was detected using the purified Pab.



Formalin-fixed and paraffin-embedded human hepatocarcinoma with SFRP5 Antibody (Center), which was peroxidase-conjugated to the secondary antibody, followed by DAB staining. This data demonstrates the use of this antibody for immunohistochemistry; clinical relevance has not been evaluated.



Flow cytometric analysis of K562 cells using SFRP5 Antibody (Center)(bottom histogram) compared to a negative control cell (top histogram). FITC-conjugated goat-anti-rabbit secondary antibodies were used for the analysis.

### **SFRP5 Antibody (Center) - Background**

Secreted frizzled-related protein 5 (SFRP5) is a member of the SFRP family that contains a cysteine-rich domain homologous to the putative Wnt-binding site of Frizzled proteins. SFRPs act as soluble modulators of Wnt signaling. SFRP5 and SFRP1 may be involved in determining the polarity of photoreceptor cells in the retina.

### **SFRP5 Antibody (Center) - References**

Deloukas,P., et.al., Nature 429 (6990), 375-381 (2004)