

**ADCK5 Antibody (C-term)**  
**Purified Rabbit Polyclonal Antibody (Pab)**  
**Catalog # AP7108b****Specification**

---

**ADCK5 Antibody (C-term) - Product Information**

Application	WB, IHC-P,E
Primary Accession	<a href="#">Q3MIX3</a>
Reactivity	Human
Host	Rabbit
Clonality	Polyclonal
Isotype	Rabbit IgG
Calculated MW	65828
Antigen Region	434-464

**ADCK5 Antibody (C-term) - Additional Information****Gene ID** 203054**Other Names**

Uncharacterized aarF domain-containing protein kinase 5, 2711-, ADCK5

**Target/Specificity**

This ADCK5 antibody is generated from rabbits immunized with a KLH conjugated synthetic peptide between 434-464 amino acids from the C-terminal region of human ADCK5.

**Dilution**

WB~~1:1000

IHC-P~~1:50~100

**Format**

Purified polyclonal antibody supplied in PBS with 0.09% (W/V) sodium azide. This antibody is prepared by Saturated Ammonium Sulfate (SAS) precipitation followed by dialysis against PBS.

**Storage**

Maintain refrigerated at 2-8°C for up to 2 weeks. For long term storage store at -20°C in small aliquots to prevent freeze-thaw cycles.

**Precautions**

ADCK5 Antibody (C-term) is for research use only and not for use in diagnostic or therapeutic procedures.

**ADCK5 Antibody (C-term) - Protein Information****Name** ADCK5

**Function** The function of this protein is not yet clear. It is not known if it has protein kinase activity and what type of substrate it would phosphorylate (Ser, Thr or Tyr).

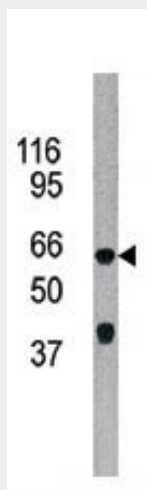
**Cellular Location**

Membrane; Single-pass membrane protein

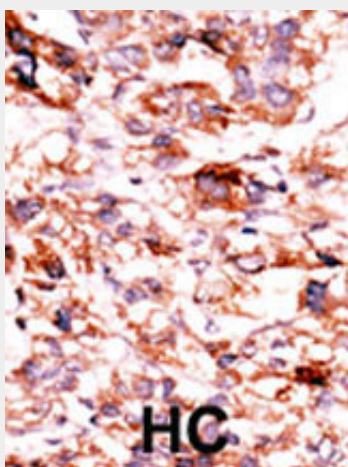
**ADCK5 Antibody (C-term) - Protocols**

Provided below are standard protocols that you may find useful for product applications.

- [Western Blot](#)
- [Blocking Peptides](#)
- [Dot Blot](#)
- [Immunohistochemistry](#)
- [Immunofluorescence](#)
- [Immunoprecipitation](#)
- [Flow Cytometry](#)
- [Cell Culture](#)

**ADCK5 Antibody (C-term) - Images**

The anti-ADCK5 Pab (Cat. #AP7108b) is used in Western blot to detect ADCK5 in 293 cell line lysate.



Formalin-fixed and paraffin-embedded human cancer tissue reacted with the primary antibody, which was peroxidase-conjugated to the secondary antibody, followed by AEC staining. This data

demonstrates the use of this antibody for immunohistochemistry; clinical relevance has not been evaluated. BC = breast carcinoma; HC = hepatocarcinoma.

**ADCK5 Antibody (C-term) - Background**

ADCK5 is member of the AarF domain containing kinase family.

**ADCK5 Antibody (C-term) - References**

Ota, T., et al., Nat. Genet. 36(1):40-45 (2004).