

**NME3 Antibody (Center)  
Purified Rabbit Polyclonal Antibody (Pab)  
Catalog # AP7156a****Specification**

---

**NME3 Antibody (Center) - Product Information**

Application	WB, IHC-P,E
Primary Accession	<a href="#">Q13232</a>
Reactivity	Human
Host	Rabbit
Clonality	Polyclonal
Isotype	Rabbit IgG
Antigen Region	51-81

**NME3 Antibody (Center) - Additional Information****Gene ID** 4832**Other Names**

Nucleoside diphosphate kinase 3, NDK 3, NDP kinase 3, DR-nm23, Nucleoside diphosphate kinase C, NDPKC, nm23-H3, NME3

**Target/Specificity**

This NME3 antibody is generated from rabbits immunized with a KLH conjugated synthetic peptide between 51-81 amino acids from the Central region of human NME3.

**Dilution**

WB~~1:1000  
IHC-P~~1:50~100

**Format**

Purified polyclonal antibody supplied in PBS with 0.09% (W/V) sodium azide. This antibody is prepared by Saturated Ammonium Sulfate (SAS) precipitation followed by dialysis against PBS.

**Storage**

Maintain refrigerated at 2-8°C for up to 2 weeks. For long term storage store at -20°C in small aliquots to prevent freeze-thaw cycles.

**Precautions**

NME3 Antibody (Center) is for research use only and not for use in diagnostic or therapeutic procedures.

**NME3 Antibody (Center) - Protein Information****Name** NME3 ([HGNC:7851](#))

**Function** Catalyzes the phosphorylation of ribonucleosides and deoxyribonucleoside diphosphates, other than ATP, into the corresponding triphosphates with ATP as the major

phosphate donor (PubMed:[11277919](#), PubMed:[30587587](#)). The ATP gamma phosphate is transferred to the nucleoside diphosphate beta phosphate via a ping-pong mechanism, using a phosphorylated active-site intermediate. Through the catalyzed exchange of gamma-phosphate between di- and triphosphonucleosides participates in regulation of intracellular nucleotide homeostasis (PubMed:[11277919](#), PubMed:[30587587](#)). Inhibits granulocyte differentiation (PubMed:[7638209](#)). May be required for ciliary function during renal development (By similarity).

#### Cellular Location

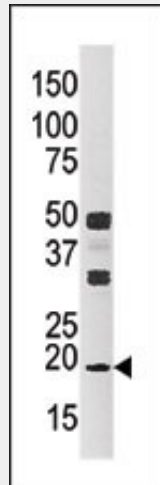
Mitochondrion outer membrane; Peripheral membrane protein. Cytoplasm Cytoplasm, cytoskeleton, cilium basal body {ECO:0000250|UniProtKB:Q9WV85}

#### NME3 Antibody (Center) - Protocols

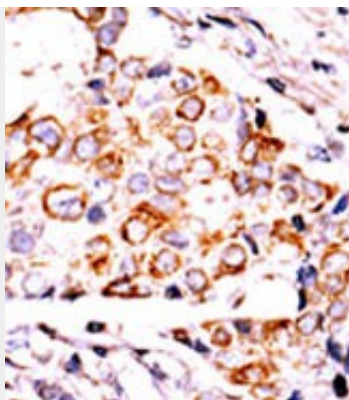
Provided below are standard protocols that you may find useful for product applications.

- [Western Blot](#)
- [Blocking Peptides](#)
- [Dot Blot](#)
- [Immunohistochemistry](#)
- [Immunofluorescence](#)
- [Immunoprecipitation](#)
- [Flow Cytometry](#)
- [Cell Culture](#)

#### NME3 Antibody (Center) - Images



Western blot analysis of anti-NME3 Pab (Cat. #AP7156a) in CEM cell line tissue lysate (35ug/lane).NME3(arrow) was detected using the purified Pab.



Formalin-fixed and paraffin-embedded human cancer tissue reacted with the primary antibody, which was peroxidase-conjugated to the secondary antibody, followed by DAB staining. This data demonstrates the use of this antibody for immunohistochemistry; clinical relevance has not been evaluated. BC = breast carcinoma; HC = hepatocarcinoma.

#### **NME3 Antibody (Center) - Background**

NME3 mRNA is preferentially expressed at early stages of myeloid differentiation of highly purified CD34(+) cells. Its constitutive expression in a myeloid precursor line, which is growth-factor dependent for both proliferation and differentiation, results in inhibition of granulocytic differentiation induced by granulocyte colony-stimulating factor and causes apoptotic cell death. These results appear consistent with a role for the NME3 gene in normal hematopoiesis and raise the possibility that its overexpression contributes to differentiation arrest, a feature of blastic transformation in chronic myelogenous leukemia.

#### **NME3 Antibody (Center) - References**

Negroni, A., et al., Cell Death Differ. 7(9):843-850 (2000).  
Martinez, R., et al., Cancer Res. 57(6):1180-1187 (1997).  
Venturelli, D., et al., Proc. Natl. Acad. Sci. U.S.A. 92(16):7435-7439 (1995).

#### **NME3 Antibody (Center) - Citations**

- [Nm23-H1 homologs suppress tumor cell motility and anchorage independent growth.](#)