

**PSKH1 Antibody (N-term H70)**  
**Purified Rabbit Polyclonal Antibody (Pab)**  
**Catalog # AP7179c**

**Specification**

---

**PSKH1 Antibody (N-term H70) - Product Information**

Application	WB, IHC-P,E
Primary Accession	<a href="#">P11801</a>
Other Accession	<a href="#">Q0V7M1</a>
Reactivity	Human
Predicted	Bovine
Host	Rabbit
Clonality	Polyclonal
Isotype	Rabbit IgG
Calculated MW	48035
Antigen Region	55-91

**PSKH1 Antibody (N-term H70) - Additional Information**

**Gene ID** 5681

**Other Names**

Serine/threonine-protein kinase H1, Protein serine kinase H1, PSK-H1, PSKH1

**Target/Specificity**

This PSKH1 antibody is generated from rabbits immunized with a KLH conjugated synthetic peptide between 55-91 amino acids from the N-terminal region of human PSKH1.

**Dilution**

WB~~1:1000

IHC-P~~1:50~100

**Format**

Purified polyclonal antibody supplied in PBS with 0.09% (W/V) sodium azide. This antibody is prepared by Saturated Ammonium Sulfate (SAS) precipitation followed by dialysis against PBS.

**Storage**

Maintain refrigerated at 2-8°C for up to 2 weeks. For long term storage store at -20°C in small aliquots to prevent freeze-thaw cycles.

**Precautions**

PSKH1 Antibody (N-term H70) is for research use only and not for use in diagnostic or therapeutic procedures.

**PSKH1 Antibody (N-term H70) - Protein Information**

**Name** PSKH1

**Function** May be a SFC-associated serine kinase (splicing factor compartment-associated serine kinase) with a role in intranuclear SR protein (non-snRNP splicing factors containing a serine/arginine-rich domain) trafficking and pre-mRNA processing.

#### Cellular Location

Golgi apparatus. Cytoplasm, cytoskeleton, microtubule organizing center, centrosome. Nucleus speckle. Endoplasmic reticulum membrane; Lipid-anchor. Cell membrane; Lipid-anchor Cytoplasm. Note=Localized in the brefeldin A-sensitive Golgi compartment, at centrosomes, in the nucleus with a somewhat speckle-like presence, membrane-associated to the endoplasmic reticulum (ER) and the plasma membrane (PM), and more diffusely in the cytoplasm Found to concentrate in splicing factor compartments (SFCs) within the nucleus of interphase cells. The acylation-negative form may be only cytoplasmic and nuclear. Acylation seems to allow the sequestering to the intracellular membranes. Myristoylation may mediate targeting to the intracellular non-Golgi membranes and palmitoylation may mediate the targeting to the Golgi membranes. Dual acylation is required to stabilize the interaction with Golgi membranes

#### Tissue Location

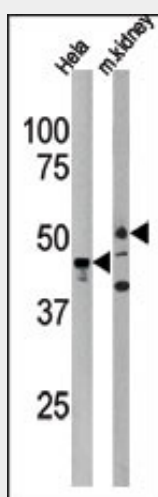
Expressed in all tissues and cell lines tested with the highest level of abundance in testis

#### PSKH1 Antibody (N-term H70) - Protocols

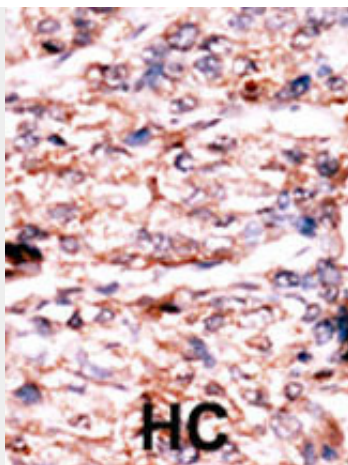
Provided below are standard protocols that you may find useful for product applications.

- [Western Blot](#)
- [Blocking Peptides](#)
- [Dot Blot](#)
- [Immunohistochemistry](#)
- [Immunofluorescence](#)
- [Immunoprecipitation](#)
- [Flow Cytometry](#)
- [Cell Culture](#)

#### PSKH1 Antibody (N-term H70) - Images



Western blot analysis of anti-PSKH1 Antibody (N-term H70) (Cat.#AP7179c) in HeLa cell line lysate and mouse kidney tissue lysate (35ug/lane). PSKH1 (arrow) was detected using the purified Pab.



Formalin-fixed and paraffin-embedded human cancer tissue reacted with the primary antibody, which was peroxidase-conjugated to the secondary antibody, followed by AEC staining. This data demonstrates the use of this antibody for immunohistochemistry; clinical relevance has not been evaluated. BC = breast carcinoma; HC = hepatocarcinoma.

#### **PSKH1 Antibody (N-term H70) - Background**

PSKH1 may be a SFC-associated serine kinase (splicing factor compartment-associated serine kinase) with a role in intranuclear SR protein (non-snRNP splicing factors containing a serine/arginine-rich domain) trafficking and pre-mRNA processing. PSKH1 is localized in the Brefeldin A-sensitive Golgi compartment, at centrosomes, in the nucleus with a somewhat speckle-like presence, membrane-associated to the endoplasmic reticulum (ER) and the plasma membrane (PM), and more diffusely in the cytoplasm.

#### **PSKH1 Antibody (N-term H70) - References**

- Brede, G., et al., Exp. Cell Res. 291(2):299-312 (2003).
- Brede, G., et al., Nucleic Acids Res. 30(23):5301-5309 (2002).
- Brede, G., et al., Genomics 70(1):82-92 (2000).
- Amarzguioui, M., et al., Nucleic Acids Res. 28(21):4113-4124 (2000).
- Larsen, F., et al., Hum. Mol. Genet. 2(10):1589-1595 (1993).