

**SEPSH2 Antibody (Center)**  
**Purified Rabbit Polyclonal Antibody (Pab)**  
**Catalog # AP7188b****Specification**

---

**SEPSH2 Antibody (Center) - Product Information**

Application	WB, IHC-P,E
Primary Accession	<a href="#">Q99611</a>
Reactivity	Human
Host	Rabbit
Clonality	Polyclonal
Isotype	Rabbit IgG
Calculated MW	47305
Antigen Region	171-201

**SEPSH2 Antibody (Center) - Additional Information****Gene ID** 22928**Other Names**

Selenide, water dikinase 2, Selenium donor protein 2, Selenophosphate synthase 2, SEPHS2, SPS2

**Target/Specificity**

This SEPSH2 antibody is generated from rabbits immunized with a KLH conjugated synthetic peptide between 171-201 amino acids from the Central region of human SEPSH2.

**Dilution**

WB~~1:1000

IHC-P~~1:50~100

**Format**

Purified polyclonal antibody supplied in PBS with 0.09% (W/V) sodium azide. This antibody is prepared by Saturated Ammonium Sulfate (SAS) precipitation followed by dialysis against PBS.

**Storage**

Maintain refrigerated at 2-8°C for up to 2 weeks. For long term storage store at -20°C in small aliquots to prevent freeze-thaw cycles.

**Precautions**

SEPSH2 Antibody (Center) is for research use only and not for use in diagnostic or therapeutic procedures.

**SEPSH2 Antibody (Center) - Protein Information****Name** SEPHS2**Synonyms** SPS2

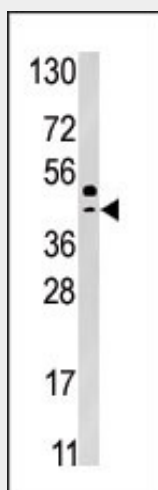
**Function** Synthesizes selenophosphate from selenide and ATP.

### SEPSH2 Antibody (Center) - Protocols

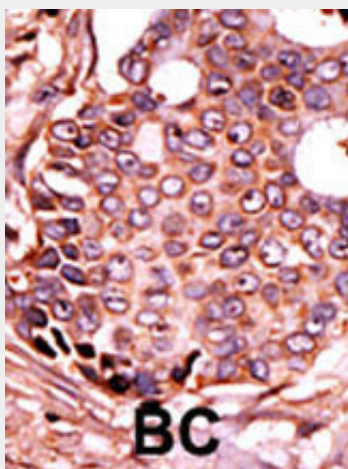
Provided below are standard protocols that you may find useful for product applications.

- [Western Blot](#)
- [Blocking Peptides](#)
- [Dot Blot](#)
- [Immunohistochemistry](#)
- [Immunofluorescence](#)
- [Immunoprecipitation](#)
- [Flow Cytometry](#)
- [Cell Culture](#)

### SEPSH2 Antibody (Center) - Images



Western blot analysis of anti-SEPSH2 Pab(Cat. #AP7188b) in HepG2 cell line lysate (35ug/lane). SEPSH2(arrow) was detected using the purified Pab.



Formalin-fixed and paraffin-embedded human cancer tissue reacted with the primary antibody, which was peroxidase-conjugated to the secondary antibody, followed by DAB staining. This data demonstrates the use of this antibody for immunohistochemistry; clinical relevance has not been

evaluated. BC = breast carcinoma; HC = hepatocarcinoma.

### **SEPSH2 Antibody (Center) - Background**

This protein encodes an enzyme that synthesizes selenophosphate from selenide and ATP. Selenophosphate is the selenium donor used to synthesize selenocysteine, which is co-translationally incorporated into selenoproteins at in-frame UGA codons. This protein itself contains a selenocysteine residue in its predicted active site. The 3' UTR of the gene has a stem-loop secondary structure called a selenocysteine insertion sequence (SECIS) element, which allows UGA to direct the incorporation of selenocysteine rather than signal a translational stop.

### **SEPSH2 Antibody (Center) - References**

Tamura, T., et al., Proc. Natl. Acad. Sci. U.S.A. 101(46):16162-16167 (2004).  
Lescure, A., et al., J. Biol. Chem. 274(53):38147-38154 (1999).  
Guimaraes, M.J., et al., Proc. Natl. Acad. Sci. U.S.A. 93(26):15086-15091 (1996).  
Guimaraes, M.J., et al., Development 121(10):3335-3346 (1995).