

**SNRK Antibody (Center)**  
**Affinity Purified Rabbit Polyclonal Antibody (Pab)**  
**Catalog # AP7249c****Specification**

---

**SNRK Antibody (Center) - Product Information**

Application	WB, IHC-P,E
Primary Accession	<a href="#">Q9NRH2</a>
Other Accession	<a href="#">Q63553</a> , <a href="#">Q8VDU5</a>
Reactivity	Human
Predicted	Mouse, Rat
Host	Rabbit
Clonality	Polyclonal
Isotype	Rabbit IgG
Antigen Region	320-349

**SNRK Antibody (Center) - Additional Information****Gene ID** 54861**Other Names**SNF-related serine/threonine-protein kinase, SNF1-related kinase, SNRK  
{ECO:0000312|EMBL:AAH715671}**Target/Specificity**

This SNRK antibody is generated from rabbits immunized with a KLH conjugated synthetic peptide between 320-349 amino acids from the Central region of human SNRK.

**Dilution**WB~~1:1000  
IHC-P~~1:10~50**Format**

Purified polyclonal antibody supplied in PBS with 0.09% (W/V) sodium azide. This antibody is purified through a protein A column, followed by peptide affinity purification.

**Storage**

Maintain refrigerated at 2-8°C for up to 2 weeks. For long term storage store at -20°C in small aliquots to prevent freeze-thaw cycles.

**Precautions**

SNRK Antibody (Center) is for research use only and not for use in diagnostic or therapeutic procedures.

**SNRK Antibody (Center) - Protein Information****Name** SNRK {ECO:0000312|EMBL:AAH71567.1}

**Function** May play a role in hematopoietic cell proliferation or differentiation. Potential mediator of neuronal apoptosis.

**Cellular Location**

Nucleus.

**Tissue Location**

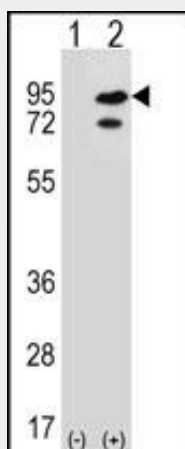
Expressed in hematopoietic progenitor cells and leukemic cell lines. Weakly expressed in the testis

**SNRK Antibody (Center) - Protocols**

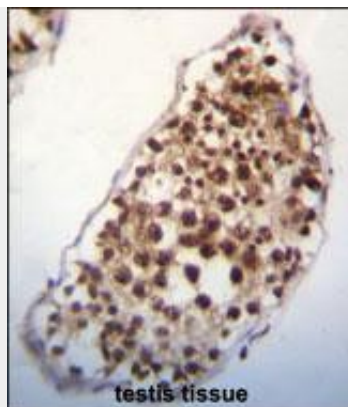
Provided below are standard protocols that you may find useful for product applications.

- [Western Blot](#)
- [Blocking Peptides](#)
- [Dot Blot](#)
- [Immunohistochemistry](#)
- [Immunofluorescence](#)
- [Immunoprecipitation](#)
- [Flow Cytometry](#)
- [Cell Culture](#)

**SNRK Antibody (Center) - Images**



Western blot analysis of SNRK (arrow) using rabbit polyclonal SNRK Antibody (Center) (Cat. #AP7249c). 293 cell lysates (2 ug/lane) either nontransfected (Lane 1) or transiently transfected (Lane 2) with the SNRK gene.



SNRK Antibody (Center) (Cat. #AP7249c) immunohistochemistry analysis in formalin fixed and paraffin embedded human testis tissue followed by peroxidase conjugation of the secondary antibody and DAB staining. This data demonstrates the use of SNRK Antibody (Center) for immunohistochemistry. Clinical relevance has not been evaluated.

#### **SNRK Antibody (Center) - Background**

SNRK, as known as, SNF-related serine/threonine-protein kinase, may play a role in hematopoietic cell proliferation or differentiation and a potential mediator of neuronal apoptosis. It is activated by phosphorylation on Thr-173 by STK11 in complex with STE20-related adapter-alpha (STRAD alpha) pseudo kinase and CAB39.

#### **SNRK Antibody (Center) - References**

Becker, W., et al., Eur. J. Biochem. 235(3):736-743 (1996).

#### **SNRK Antibody (Center) - Citations**

- [Sucrose non-fermenting related kinase enzyme is essential for cardiac metabolism.](#)