

**RICTOR Antibody (Center)**  
**Purified Rabbit Polyclonal Antibody (Pab)**  
**Catalog # AP7259c****Specification**

---

**RICTOR Antibody (Center) - Product Information**

Application	WB,E
Primary Accession	<a href="#">Q6R327</a>
Reactivity	Human, Mouse
Host	Rabbit
Clonality	Polyclonal
Isotype	Rabbit IgG
Calculated MW	192218
Antigen Region	805-835

**RICTOR Antibody (Center) - Additional Information****Gene ID** 253260**Other Names**Rapamycin-insensitive companion of mTOR, AVO3 homolog, hAVO3, RICTOR  
{ECO:0000312|EMBL:EAW559801}**Target/Specificity**

This RICTOR antibody is generated from rabbits immunized with a KLH conjugated synthetic peptide between 805-835 amino acids from the Central region of human RICTOR.

**Dilution**

WB~~1:1000

**Format**

Purified polyclonal antibody supplied in PBS with 0.09% (W/V) sodium azide. This antibody is prepared by Saturated Ammonium Sulfate (SAS) precipitation followed by dialysis against PBS.

**Storage**

Maintain refrigerated at 2-8°C for up to 2 weeks. For long term storage store at -20°C in small aliquots to prevent freeze-thaw cycles.

**Precautions**

RICTOR Antibody (Center) is for research use only and not for use in diagnostic or therapeutic procedures.

**RICTOR Antibody (Center) - Protein Information****Name** RICTOR ([HGNC:28611](#))**Function** Subunit of mTORC2, which regulates cell growth and survival in response to hormonal signals. mTORC2 is activated by growth factors, but, in contrast to mTORC1, seems to be

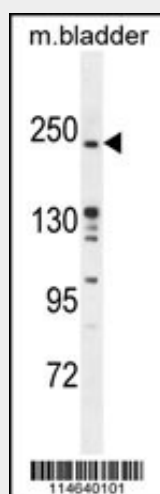
nutrient-insensitive. mTORC2 seems to function upstream of Rho GTPases to regulate the actin cytoskeleton, probably by activating one or more Rho-type guanine nucleotide exchange factors. mTORC2 promotes the serum-induced formation of stress-fibers or F-actin. mTORC2 plays a critical role in AKT1 'Ser-473' phosphorylation, which may facilitate the phosphorylation of the activation loop of AKT1 on 'Thr-308' by PDK1 which is a prerequisite for full activation. mTORC2 regulates the phosphorylation of SGK1 at 'Ser-422'. mTORC2 also modulates the phosphorylation of PRKCA on 'Ser-657'. Plays an essential role in embryonic growth and development.

### **RICTOR Antibody (Center) - Protocols**

Provided below are standard protocols that you may find useful for product applications.

- [Western Blot](#)
- [Blocking Peptides](#)
- [Dot Blot](#)
- [Immunohistochemistry](#)
- [Immunofluorescence](#)
- [Immunoprecipitation](#)
- [Flow Cytometry](#)
- [Cell Culture](#)

### **RICTOR Antibody (Center) - Images**



RICTOR Antibody (Center) (Cat.#AP7259c) western blot analysis in mouse bladder tissue lysates (35ug/lane). This demonstrates the RICTOR antibody detected the RICTOR protein (arrow).

### **RICTOR Antibody (Center) - Background**

RICTOR and MTOR (FRAP1) are components of a protein complex that integrates nutrient- and growth factor-derived signals to regulate cell growth.

### **RICTOR Antibody (Center) - References**

Pearce, L.R., Biochem. J. 405 (3), 513-522 (2007)  
Yang, Q., Genes Dev. 20 (20), 2820-2832 (2006)  
Jacinto, E., Cell 127 (1), 125-137 (2006)