

EN1 (Engrailed 1) Antibody (Center)
Purified Rabbit Polyclonal Antibody (Pab)
Catalog # AP7278C**Specification**

EN1 (Engrailed 1) Antibody (Center) - Product Information

Application	WB,E
Primary Accession	Q05925
Reactivity	Human, Mouse
Host	Rabbit
Clonality	Polyclonal
Isotype	Rabbit IgG
Antigen Region	125-155

EN1 (Engrailed 1) Antibody (Center) - Additional Information**Gene ID** 2019**Other Names**

Homeobox protein engrailed-1, Homeobox protein en-1, Hu-En-1, EN1

Target/Specificity

This EN1 (Engrailed 1) antibody is generated from rabbits immunized with a KLH conjugated synthetic peptide between 125-155 amino acids from the Central region of human EN1 (Engrailed 1).

Dilution

WB~~1:1000

Format

Purified polyclonal antibody supplied in PBS with 0.09% (W/V) sodium azide. This antibody is prepared by Saturated Ammonium Sulfate (SAS) precipitation followed by dialysis against PBS.

Storage

Maintain refrigerated at 2-8°C for up to 2 weeks. For long term storage store at -20°C in small aliquots to prevent freeze-thaw cycles.

Precautions

EN1 (Engrailed 1) Antibody (Center) is for research use only and not for use in diagnostic or therapeutic procedures.

EN1 (Engrailed 1) Antibody (Center) - Protein Information**Name** EN1

Function Required for proper formation of the apical ectodermal ridge and correct dorsal-ventral patterning in the limb.

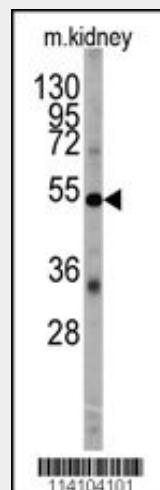
Cellular Location

Nucleus.

EN1 (Engrailed 1) Antibody (Center) - Protocols

Provided below are standard protocols that you may find useful for product applications.

- [Western Blot](#)
- [Blocking Peptides](#)
- [Dot Blot](#)
- [Immunohistochemistry](#)
- [Immunofluorescence](#)
- [Immunoprecipitation](#)
- [Flow Cytometry](#)
- [Cell Culture](#)

EN1 (Engrailed 1) Antibody (Center) - Images

Western blot analysis of anti-EN1 Antibody (Center) (RB14104) in mouse kidney tissue lysates (35ug/lane). EN1 (arrow) was detected using the purified Pab.

EN1 (Engrailed 1) Antibody (Center) - Background

Homeobox-containing genes are thought to have a role in controlling development. In *Drosophila*, the 'engrailed' (*en*) gene plays an important role during development in segmentation, where it is required for the formation of posterior compartments. Different mutations in the mouse homologs, *En1* and *En2*, produced different developmental defects that frequently are lethal. The human engrailed homologs 1 and 2 encode homeodomain-containing proteins and have been implicated in the control of pattern formation during development of the central nervous system.

EN1 (Engrailed 1) Antibody (Center) - References

Bachar-Dahan, L., *Mol. Biol. Cell* 17 (6), 2572-2580 (2006)
Kohler, A., *Genomics* 15 (1), 233-235 (1993)

EN1 (Engrailed 1) Antibody (Center) - Citations

- [Engrailed 1 overexpression as a potential prognostic marker in quintuple-negative breast cancer.](#)

