

LAP3 Antibody (N-term)
Purified Rabbit Polyclonal Antibody (Pab)
Catalog # AP7296a**Specification**

LAP3 Antibody (N-term) - Product Information

| | |
|-------------------|------------------------|
| Application | WB, IHC-P,E |
| Primary Accession | P28838 |
| Reactivity | Human |
| Host | Rabbit |
| Clonality | Polyclonal |
| Isotype | Rabbit IgG |
| Antigen Region | 89-119 |

LAP3 Antibody (N-term) - Additional Information**Gene ID** 51056**Other Names**

Cytosol aminopeptidase, Leucine aminopeptidase 3, LAP-3, Leucyl aminopeptidase, Peptidase S, Proline aminopeptidase, Prolyl aminopeptidase, LAP3, LAPEP, PEPS

Target/Specificity

This LAP3 antibody is generated from rabbits immunized with a KLH conjugated synthetic peptide between 89-119 amino acids from the N-terminal region of human LAP3.

Dilution

WB~~1:1000
IHC-P~~1:10~50

Format

Purified polyclonal antibody supplied in PBS with 0.09% (W/V) sodium azide. This antibody is prepared by Saturated Ammonium Sulfate (SAS) precipitation followed by dialysis against PBS.

Storage

Maintain refrigerated at 2-8°C for up to 2 weeks. For long term storage store at -20°C in small aliquots to prevent freeze-thaw cycles.

Precautions

LAP3 Antibody (N-term) is for research use only and not for use in diagnostic or therapeutic procedures.

LAP3 Antibody (N-term) - Protein Information**Name** LAP3 ([HGNC:18449](#))

Function Cytosolic metallopeptidase that catalyzes the removal of unsubstituted N-terminal hydrophobic amino acids from various peptides. The presence of Zn(2+) ions is essential for the

peptidase activity, and the association with other cofactors can modulate the substrate specificity of the enzyme. For instance, in the presence of $Mn(2+)$, it displays a specific Cys-Gly hydrolyzing activity of Cys-Gly-S- conjugates. Involved in the metabolism of glutathione and in the degradation of glutathione S-conjugates, which may play a role in the control of the cell redox status.

Cellular Location

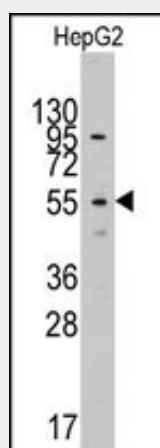
Cytoplasm {ECO:0000250|UniProtKB:Q68FS4}.

LAP3 Antibody (N-term) - Protocols

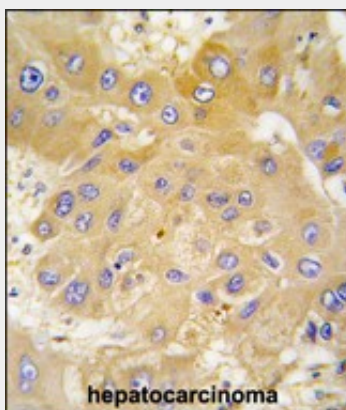
Provided below are standard protocols that you may find useful for product applications.

- [Western Blot](#)
- [Blocking Peptides](#)
- [Dot Blot](#)
- [Immunohistochemistry](#)
- [Immunofluorescence](#)
- [Immunoprecipitation](#)
- [Flow Cytometry](#)
- [Cell Culture](#)

LAP3 Antibody (N-term) - Images



Western blot analysis of anti-LAP3(N-term) Pab (Cat.#AP7296a) in HepG2 cell line lysates (35ug/lane). LAP3(arrow) was detected using the purified Pab.



Formalin-fixed and paraffin-embedded human hepatocarcinoma tissue reacted with LAP3

antibody (N-term) (Cat.#AP7296a), which was peroxidase-conjugated to the secondary antibody, followed by DAB staining. This data demonstrates the use of this antibody for immunohistochemistry; clinical relevance has not been evaluated.

LAP3 Antibody (N-term) - Background

LAP3 is presumably involved in the processing and regular turnover of intracellular proteins. It catalyzes the removal of unsubstituted N-terminal amino acids from various peptides. Release of an N-terminal amino acid, Xaa-|-Yaa-, in which Xaa is preferably Leu, but may be other amino acids including Pro although not Arg or Lys, and Yaa may be Pro.

LAP3 Antibody (N-term) - References

Goto,Y.,FEBS Lett. 580 (7), 1833-1838 (2006)

Matsushima,M.,Biochem. Biophys. Res. Commun. 178 (3), 1459-1464 (1991)

LAP3 Antibody (N-term) - Citations

- [LAP3 promotes glioma progression by regulating proliferation, migration and invasion of glioma cells.](#)