

**MIC1 Antibody (Center)**  
**Purified Rabbit Polyclonal Antibody (Pab)**  
**Catalog # AP7299c****Specification**

---

**MIC1 Antibody (Center) - Product Information**

Application	WB,E
Primary Accession	<a href="#">Q96DM3</a>
Reactivity	Human
Host	Rabbit
Clonality	Polyclonal
Isotype	Rabbit IgG
Calculated MW	74975
Antigen Region	399-428

**MIC1 Antibody (Center) - Additional Information****Gene ID** 29919**Other Names**

Uncharacterized protein C18orf8, Colon cancer-associated protein Mic1, Mic-1, C18orf8, MIC1

**Target/Specificity**

This MIC1 antibody is generated from rabbits immunized with a KLH conjugated synthetic peptide between 399-428 amino acids from the Central region of human MIC1.

**Dilution**

WB~~1:1000

**Format**

Purified polyclonal antibody supplied in PBS with 0.09% (W/V) sodium azide. This antibody is prepared by Saturated Ammonium Sulfate (SAS) precipitation followed by dialysis against PBS.

**Storage**

Maintain refrigerated at 2-8°C for up to 2 weeks. For long term storage store at -20°C in small aliquots to prevent freeze-thaw cycles.

**Precautions**

MIC1 Antibody (Center) is for research use only and not for use in diagnostic or therapeutic procedures.

**MIC1 Antibody (Center) - Protein Information****Name** RMC1 ([HGNC:24326](#))**Synonyms** C18orf8, MIC1, WDR98**Function** Component of the CCZ1-MON1 RAB7A guanine exchange factor (GEF). Acts as a

positive regulator of CCZ1-MON1A/B function necessary for endosomal/autophagic flux and efficient RAB7A localization (PubMed:[29038162](#)).

#### Cellular Location

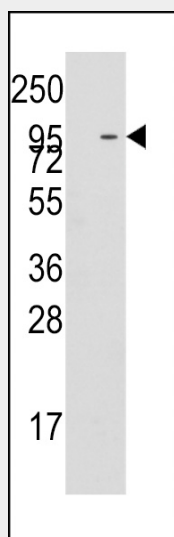
Lysosome membrane. Late endosome membrane

### MIC1 Antibody (Center) - Protocols

Provided below are standard protocols that you may find useful for product applications.

- [Western Blot](#)
- [Blocking Peptides](#)
- [Dot Blot](#)
- [Immunohistochemistry](#)
- [Immunofluorescence](#)
- [Immunoprecipitation](#)
- [Flow Cytometry](#)
- [Cell Culture](#)

### MIC1 Antibody (Center) - Images



Western blot analysis of anti-MIC1 (Center) Pab (Cat.#AP7299c) pre-incubated with and without blocking peptide (Cat.#BP7299c) in K562 cell line lysate. MIC1(arrow) was detected using the purified Pab.

### MIC1 Antibody (Center) - Background

Colon cancer-associated protein Mic1.

### MIC1 Antibody (Center) - References