

**CA14 Antibody (N-term)**  
**Purified Rabbit Polyclonal Antibody (Pab)**  
**Catalog # AP7306a****Specification**

---

**CA14 Antibody (N-term) - Product Information**

Application	WB, FC,E
Primary Accession	<a href="#">Q9ULX7</a>
Reactivity	Human
Host	Rabbit
Clonality	Polyclonal
Isotype	Rabbit IgG
Calculated MW	37668
Antigen Region	51-80

**CA14 Antibody (N-term) - Additional Information****Gene ID** 23632**Other Names**

Carbonic anhydrase 14, Carbonate dehydratase XIV, Carbonic anhydrase XIV, CA-XIV, CA14

**Target/Specificity**

This CA14 antibody is generated from rabbits immunized with a KLH conjugated synthetic peptide between 51-80 amino acids from the N-terminal region of human CA14.

**Dilution**WB~~1:1000  
FC~~1:10~50**Format**

Purified polyclonal antibody supplied in PBS with 0.09% (W/V) sodium azide. This antibody is prepared by Saturated Ammonium Sulfate (SAS) precipitation followed by dialysis against PBS.

**Storage**

Maintain refrigerated at 2-8°C for up to 2 weeks. For long term storage store at -20°C in small aliquots to prevent freeze-thaw cycles.

**Precautions**

CA14 Antibody (N-term) is for research use only and not for use in diagnostic or therapeutic procedures.

**CA14 Antibody (N-term) - Protein Information****Name** CA14**Function** Reversible hydration of carbon dioxide.

**Cellular Location**

Membrane; Single-pass type I membrane protein

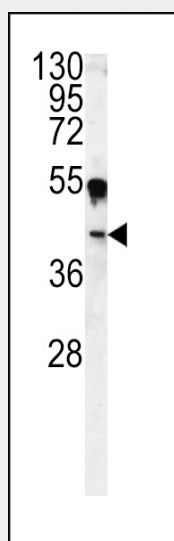
**Tissue Location**

High expression in all parts of the central nervous system and lower expression in adult liver, heart, small intestine, colon, kidney, urinary bladder and skeletal muscle

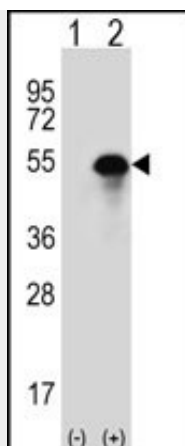
**CA14 Antibody (N-term) - Protocols**

Provided below are standard protocols that you may find useful for product applications.

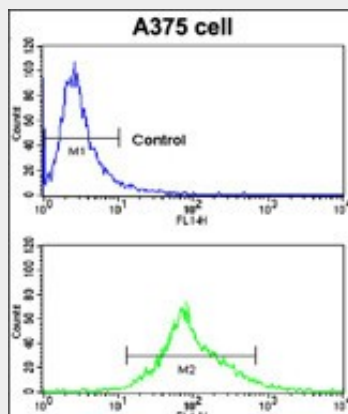
- [Western Blot](#)
- [Blocking Peptides](#)
- [Dot Blot](#)
- [Immunohistochemistry](#)
- [Immunofluorescence](#)
- [Immunoprecipitation](#)
- [Flow Cytometry](#)
- [Cell Culture](#)

**CA14 Antibody (N-term) - Images**

Western blot analysis of CA14 antibody (N-term) (Cat.#AP7306a) in A375 cell line lysates (35ug/lane). CA14 (arrow) was detected using the purified Pab.



Western blot analysis of CA14 (arrow) using rabbit polyclonal CA14 Antibody (N-term) (Cat.#AP7306a). 293 cell lysates (2 ug/lane) either nontransfected (Lane 1) or transiently transfected (Lane 2) with the CA14 gene.



Flow cytometric analysis of A375 cells using CA14 Antibody (N-term) (bottom histogram) compared to a negative control cell (top histogram). FITC-conjugated goat-anti-rabbit secondary antibodies were used for the analysis.

### CA14 Antibody (N-term) - Background

CA14 belongs a large family of zinc metalloenzymes that catalyze the versible hydration of carbon dioxide. The protein is predicted to be a type I membrane protein and shares highest sequence similarity with the other transmembrane CA isoform, CA XII; however, they have different patterns of tissue-specific expression and thus may play different physiologic roles.

### CA14 Antibody (N-term) - References

- Parkkila,S. Natl. Acad. Sci. U.S.A. 98 (4), 1918-1923 (2001)
- Fujikawa-Adachi,K., Nishimori,I. Genomics 61 (1), 74-81 (1999)
- Tarun,A.S., Bryant,B. Chem. Senses 28 (7), 621-629 (2003)