

**KRT9 Antibody (Center K317)**  
**Affinity Purified Rabbit Polyclonal Antibody (Pab)**  
**Catalog # AP7312d****Specification**

---

**KRT9 Antibody (Center K317) - Product Information**

Application	WB, IHC-P, FC,E
Primary Accession	<a href="#">P35527</a>
Reactivity	Human
Host	Rabbit
Clonality	Polyclonal
Isotype	Rabbit IgG
Calculated MW	62064
Antigen Region	302-331

**KRT9 Antibody (Center K317) - Additional Information****Gene ID** 3857**Other Names**

Keratin, type I cytoskeletal 9, Cytokeratin-9, CK-9, Keratin-9, K9, KRT9

**Target/Specificity**

This KRT9 antibody is generated from rabbits immunized with a KLH conjugated synthetic peptide between 302-331 amino acids from the Central region of human KRT9.

**Dilution**

WB~~1:1000  
IHC-P~~1:50~100  
FC~~1:10~50

**Format**

Purified polyclonal antibody supplied in PBS with 0.09% (W/V) sodium azide. This antibody is purified through a protein A column, followed by peptide affinity purification.

**Storage**

Maintain refrigerated at 2-8°C for up to 2 weeks. For long term storage store at -20°C in small aliquots to prevent freeze-thaw cycles.

**Precautions**

KRT9 Antibody (Center K317) is for research use only and not for use in diagnostic or therapeutic procedures.

**KRT9 Antibody (Center K317) - Protein Information****Name** KRT9**Function** May serve an important special function either in the mature palmar and plantar skin

tissue or in the morphogenetic program of the formation of these tissues. Plays a role in keratin filament assembly.

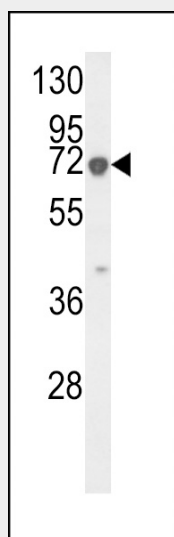
**Tissue Location**

Expressed in the terminally differentiated epidermis of palms and soles.

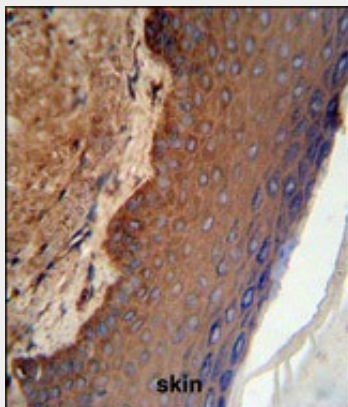
**KRT9 Antibody (Center K317) - Protocols**

Provided below are standard protocols that you may find useful for product applications.

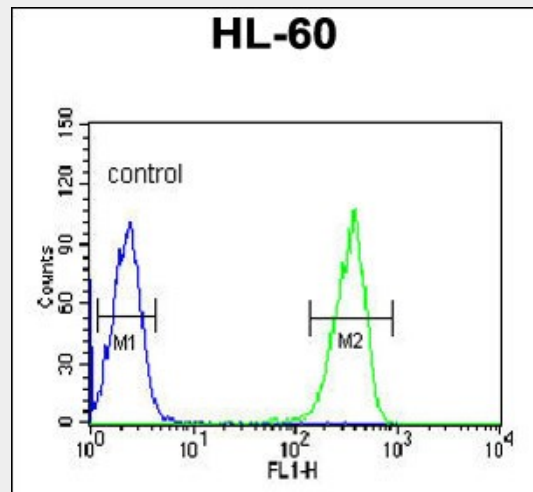
- [Western Blot](#)
- [Blocking Peptides](#)
- [Dot Blot](#)
- [Immunohistochemistry](#)
- [Immunofluorescence](#)
- [Immunoprecipitation](#)
- [Flow Cytometry](#)
- [Cell Culture](#)

**KRT9 Antibody (Center K317) - Images**

Western blot analysis of KRT9 Antibody (Center K317) (Cat. #AP7312d) in HL-60 cell line lysates (35ug/lane). KRT9 (arrow) was detected using the purified Pab.



KRT9 Antibody (Center K317) (Cat. #AP7312d) IHC analysis in formalin fixed and paraffin embedded skin tissue followed by peroxidase conjugation of the secondary antibody and DAB staining. This data demonstrates the use of the KRT9 Antibody (Center K317) for immunohistochemistry. Clinical relevance has not been evaluated.



KRT9 Antibody (Center K317) (Cat. #AP7312d) flow cytometric analysis of HL-60 cells (right histogram) compared to a negative control cell (left histogram). FITC-conjugated goat-anti-rabbit secondary antibodies were used for the analysis.

#### **KRT9 Antibody (Center K317) - Background**

KRT9 is the type I keratin 9, an intermediate filament chain expressed only in the terminally differentiated epidermis of palms and soles. Mutations in this protein cause epidermolytic palmoplantar keratoderma.

#### **KRT9 Antibody (Center K317) - References**

- Feng,W., Han,W. Eur J Dermatol 18 (4), 387-390 (2008)
- Zhao,J.J., Zhang,Z.H. Int. J. Dermatol. 47 (6), 634-637 (2008)
- Torchard,D., Blanchet-Bardon,C. Nat. Genet. 6 (1), 106-110 (1994)
- Reis,A., Kuster,W. Hum. Genet. 90 (1-2), 113-116 (1992)