

**SERPINA3 Antibody (C-term)**  
**Purified Rabbit Polyclonal Antibody (Pab)**  
**Catalog # AP7314b****Specification**

---

**SERPINA3 Antibody (C-term) - Product Information**

Application	WB, FC,E
Primary Accession	<a href="#">P01011</a>
Reactivity	Human
Host	Rabbit
Clonality	Polyclonal
Isotype	Rabbit IgG
Antigen Region	282-310

**SERPINA3 Antibody (C-term) - Additional Information****Gene ID 12****Other Names**

Alpha-1-antichymotrypsin, ACT, Cell growth-inhibiting gene 24/25 protein, Serpin A3, Alpha-1-antichymotrypsin His-Pro-less, SERPINA3, AACT

**Target/Specificity**

This SERPINA3 antibody is generated from rabbits immunized with a KLH conjugated synthetic peptide between 282-310 amino acids from the C-terminal region of human SERPINA3.

**Dilution**

WB~~1:1000  
FC~~1:10~50

**Format**

Purified polyclonal antibody supplied in PBS with 0.09% (W/V) sodium azide. This antibody is prepared by Saturated Ammonium Sulfate (SAS) precipitation followed by dialysis against PBS.

**Storage**

Maintain refrigerated at 2-8°C for up to 2 weeks. For long term storage store at -20°C in small aliquots to prevent freeze-thaw cycles.

**Precautions**

SERPINA3 Antibody (C-term) is for research use only and not for use in diagnostic or therapeutic procedures.

**SERPINA3 Antibody (C-term) - Protein Information**

**Name** SERPINA3

**Synonyms** AACT

**Function** Although its physiological function is unclear, it can inhibit neutrophil cathepsin G and mast cell chymase, both of which can convert angiotensin-1 to the active angiotensin-2.

**Cellular Location**

Secreted.

**Tissue Location**

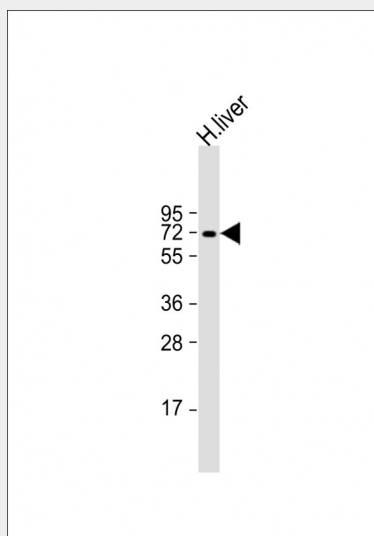
Plasma. Synthesized in the liver. Like the related alpha-1-antitrypsin, its concentration increases in the acute phase of inflammation or infection. Found in the amyloid plaques from the hippocampus of Alzheimer disease brains.

**SERPINA3 Antibody (C-term) - Protocols**

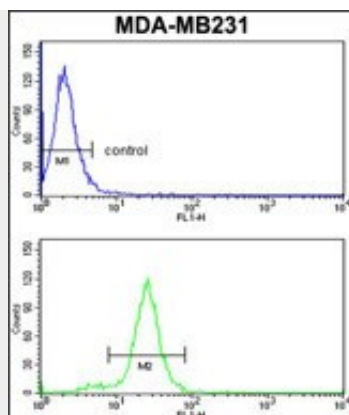
Provided below are standard protocols that you may find useful for product applications.

- [Western Blot](#)
- [Blocking Peptides](#)
- [Dot Blot](#)
- [Immunohistochemistry](#)
- [Immunofluorescence](#)
- [Immunoprecipitation](#)
- [Flow Cytometry](#)
- [Cell Culture](#)

**SERPINA3 Antibody (C-term) - Images**



Anti-SERPINA3 Antibody (C-term) at 1:1000 dilution + human liver lysate Lysates/proteins at 20 µg per lane. Secondary Goat Anti-Rabbit IgG, (H+L), Peroxidase conjugated at 1/10000 dilution. Predicted band size : 48 kDa Blocking/Dilution buffer: 5% NFDm/TBST.



SERPINA3 Antibody (C-term) (Cat.#AP7314b) flow cytometry analysis of MDA-MB231 cells (bottom histogram) compared to a negative control cell (top histogram). FITC-conjugated goat-anti-rabbit secondary antibodies were used for the analysis.

#### **SERPINA3 Antibody (C-term) - Background**

SERPINA3 is a plasma protease inhibitor and member of the serine protease inhibitor class. Polymorphisms in this protein appear to be tissue specific and influence protease targeting. Variations in this protein's sequence have been implicated in Alzheimer's disease, and deficiency of this protein has been associated with liver disease. Mutations have been identified in patients with Parkinson disease and chronic obstructive pulmonary disease.

#### **SERPINA3 Antibody (C-term) - References**

Abraham,C.R., Shirahama,T. Neurobiol. Aging 11 (2), 123-129 (1990)  
Baumann,U., Huber,R. J. Mol. Biol. 218 (3), 595-606 (1991)  
Desrochers,P.E., Mookhtiar,K. J. Biol. Chem. 267 (7), 5005-5012 (1992)