

KLF5 Antibody (Center)
Purified Rabbit Polyclonal Antibody (Pab)
Catalog # AP7342c**Specification**

KLF5 Antibody (Center) - Product Information

Application	WB,E
Primary Accession	Q13887
Other Accession	Q9Z0Z7
Reactivity	Human
Predicted	Mouse
Host	Rabbit
Clonality	Polyclonal
Isotype	Rabbit IgG
Calculated MW	50792
Antigen Region	127-156

KLF5 Antibody (Center) - Additional Information**Gene ID** 688**Other Names**

Krueppel-like factor 5, Basic transcription element-binding protein 2, BTE-binding protein 2, Colon krueppel-like factor, GC-box-binding protein 2, Intestinal-enriched krueppel-like factor, Transcription factor BTEB2, KLF5, BTEB2, CKLF, IKLF

Target/Specificity

This KLF5 antibody is generated from rabbits immunized with a KLH conjugated synthetic peptide between 127-156 amino acids from the Central region of human KLF5.

Dilution

WB~~1:1000

Format

Purified polyclonal antibody supplied in PBS with 0.09% (W/V) sodium azide. This antibody is prepared by Saturated Ammonium Sulfate (SAS) precipitation followed by dialysis against PBS.

Storage

Maintain refrigerated at 2-8°C for up to 2 weeks. For long term storage store at -20°C in small aliquots to prevent freeze-thaw cycles.

Precautions

KLF5 Antibody (Center) is for research use only and not for use in diagnostic or therapeutic procedures.

KLF5 Antibody (Center) - Protein Information**Name** KLF5

Synonyms BTEB2, CKLF, IKLF

Function Transcription factor that binds to GC box promoter elements. Activates the transcription of these genes.

Cellular Location

Nucleus.

Tissue Location

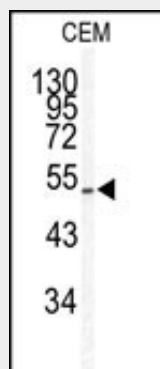
Expressed only in testis and placenta.

KLF5 Antibody (Center) - Protocols

Provided below are standard protocols that you may find useful for product applications.

- [Western Blot](#)
- [Blocking Peptides](#)
- [Dot Blot](#)
- [Immunohistochemistry](#)
- [Immunofluorescence](#)
- [Immunoprecipitation](#)
- [Flow Cytometry](#)
- [Cell Culture](#)

KLF5 Antibody (Center) - Images



Western blot analysis of KLF5 antibody (Center) (Cat.# AP7342c) in CEM cell line lysates (35ug/lane). KLF5 (arrow) was detected using the purified Pab.

KLF5 Antibody (Center) - Background

KLF5 is a member of the Kruppel-like factor subfamily of zinc finger proteins. Since the protein localizes to the nucleus and binds the epidermal growth factor response element, the protein is thought to be a transcription factor.

KLF5 Antibody (Center) - References

- Guo,P., Dong,X.Y. J. Biol. Chem. 284 (10), 6071-6078 (2009)
Lee,M.Y., Moon,J.S. Biochem. J. 417 (1), 313-322 (2009)
Du,J.X., Bialkowska,A.B. J. Biol. Chem. 283 (46), 31991-32002 (2008)
Miyamoto,S., Suzuki,T. Mol. Cell. Biol. 23 (23), 8528-8541 (2003)
Shi,H., Zhang,Z. Nucleic Acids Res. 27 (24), 4807-4815 (1999)