

PTTG1 Antibody (N-term)
Purified Rabbit Polyclonal Antibody (Pab)
Catalog # AP7354A

Specification

PTTG1 Antibody (N-term) - Product Information

Application	IF, WB, IHC-P,E
Primary Accession	O95997
Reactivity	Human
Host	Rabbit
Clonality	Polyclonal
Isotype	Rabbit IgG
Antigen Region	16-45

PTTG1 Antibody (N-term) - Additional Information

Gene ID 9232

Other Names

Securin, Esp1-associated protein, Pituitary tumor-transforming gene 1 protein, Tumor-transforming protein 1, hPTTG, PTTG1, EAP1, PTTG, TUTR1

Target/Specificity

This PTTG1 antibody is generated from rabbits immunized with a KLH conjugated synthetic peptide between 16-45 amino acids from the N-terminal region of human PTTG1.

Dilution

IF~~1:100
WB~~1:500
IHC-P~~1:50~100

Format

Purified polyclonal antibody supplied in PBS with 0.09% (W/V) sodium azide. This antibody is prepared by Saturated Ammonium Sulfate (SAS) precipitation followed by dialysis against PBS.

Storage

Maintain refrigerated at 2-8°C for up to 2 weeks. For long term storage store at -20°C in small aliquots to prevent freeze-thaw cycles.

Precautions

PTTG1 Antibody (N-term) is for research use only and not for use in diagnostic or therapeutic procedures.

PTTG1 Antibody (N-term) - Protein Information

Name PTTG1

Synonyms EAP1, PTTG, TUTR1

Function Regulatory protein, which plays a central role in chromosome stability, in the p53/TP53 pathway, and DNA repair. Probably acts by blocking the action of key proteins. During the mitosis, it blocks Separase/ESPL1 function, preventing the proteolysis of the cohesin complex and the subsequent segregation of the chromosomes. At the onset of anaphase, it is ubiquitinated, conducting to its destruction and to the liberation of ESPL1. Its function is however not limited to a blocking activity, since it is required to activate ESPL1. Negatively regulates the transcriptional activity and related apoptosis activity of TP53. The negative regulation of TP53 may explain the strong transforming capability of the protein when it is overexpressed. May also play a role in DNA repair via its interaction with Ku, possibly by connecting DNA damage-response pathways with sister chromatid separation.

Cellular Location

Cytoplasm. Nucleus.

Tissue Location

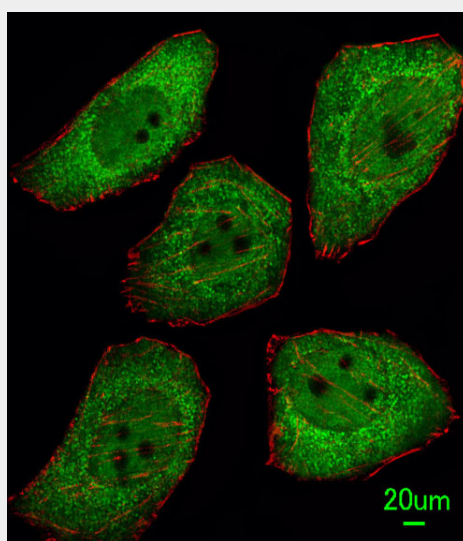
Expressed at low level in most tissues, except in adult testis, where it is highly expressed. Overexpressed in many patients suffering from pituitary adenomas, primary epithelial neoplasias, and esophageal cancer.

PTTG1 Antibody (N-term) - Protocols

Provided below are standard protocols that you may find useful for product applications.

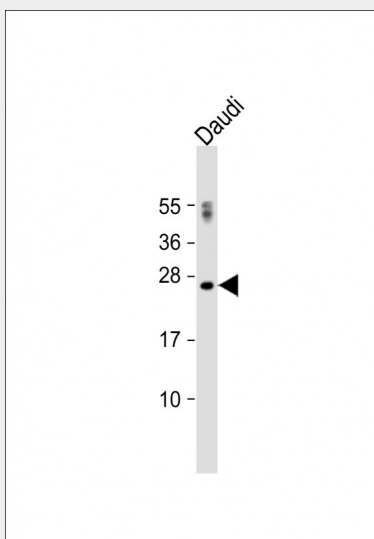
- [Western Blot](#)
- [Blocking Peptides](#)
- [Dot Blot](#)
- [Immunohistochemistry](#)
- [Immunofluorescence](#)
- [Immunoprecipitation](#)
- [Flow Cytometry](#)
- [Cell Culture](#)

PTTG1 Antibody (N-term) - Images

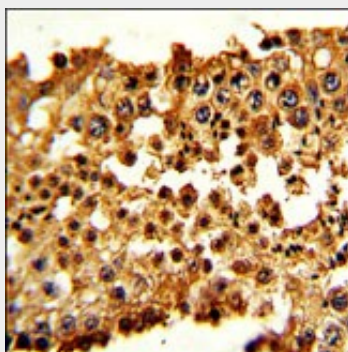


Immunofluorescent analysis of U251 cells, using PTTG1 Antibody (N-term) (Cat. #AP7354a). AP7354a was diluted at 1:100 dilution. Alexa Fluor 488-conjugated goat anti-rabbit IgG at 1:400 dilution was used as the secondary antibody (green). Cytoplasmic actin was counterstained with

Dylight Fluor® 554 (red) conjugated Phalloidin (red).



Anti-PTTG1 Antibody (N-term) at 1:500 dilution + Daudi whole cell lysate Lysates/proteins at 20 µg per lane. Secondary Goat Anti-Rabbit IgG, (H+L), Peroxidase conjugated at 1/10000 dilution. Predicted band size : 22 kDa Blocking/Dilution buffer: 5% NFDM/TBST.



Formalin-fixed and paraffin-embedded human testis tissue with PTTG1 Antibody (N-term), which was peroxidase-conjugated to the secondary antibody, followed by DAB staining. This data demonstrates the use of this antibody for immunohistochemistry; clinical relevance has not been evaluated.

PTTG1 Antibody (N-term) - Background

PTTG1 is a homolog of yeast securin proteins, which prevent separins from promoting sister chromatid separation. It is an anaphase-promoting complex (APC) substrate that associates with a separin until activation of the APC. The protein has transforming activity in vitro and tumorigenic activity in vivo, and is highly expressed in various tumors. This protein contains 2 PXXP motifs, which are required for its transforming and tumorigenic activities, as well as for its stimulation of basic fibroblast growth factor expression. It also contains a destruction box (D box) that is required for its degradation by the APC. The acidic C-terminal region of the protein can act as a transactivation domain. It is mainly a cytosolic protein, although it partially localizes in the nucleus.

PTTG1 Antibody (N-term) - References

Li,T., J Genet Genomics 36 (6), 335-342 (2009)
Yan,S., Cancer Res. 69 (8), 3283-3290 (2009)
Chesnokova,V., Horm. Res. 71 SUPPL 2, 82-87 (2009)

PTTG1 Antibody (N-term) - Citations

- [Pituitary tumor transforming gene: a novel therapeutic target for glioma treatment.](#)