

MTHFD2 Antibody (C-term)
Purified Rabbit Polyclonal Antibody (Pab)
Catalog # AP7362B**Specification**

MTHFD2 Antibody (C-term) - Product Information

Application	WB, IHC-P, FC,E
Primary Accession	P13995
Reactivity	Human
Host	Rabbit
Clonality	Polyclonal
Isotype	Rabbit IgG
Antigen Region	271-299

MTHFD2 Antibody (C-term) - Additional Information**Gene ID** 10797**Other Names**

Bifunctional methylenetetrahydrofolate dehydrogenase/cyclohydrolase, mitochondrial, NAD-dependent methylenetetrahydrofolate dehydrogenase, Methenyltetrahydrofolate cyclohydrolase, MTHFD2, NMDMC

Target/Specificity

This MTHFD2 antibody is generated from rabbits immunized with a KLH conjugated synthetic peptide between 271-299 amino acids from the C-terminal region of human MTHFD2.

Dilution

WB~~1:1000
IHC-P~~1:10~50
FC~~1:10~50

Format

Purified polyclonal antibody supplied in PBS with 0.09% (W/V) sodium azide. This antibody is prepared by Saturated Ammonium Sulfate (SAS) precipitation followed by dialysis against PBS.

Storage

Maintain refrigerated at 2-8°C for up to 2 weeks. For long term storage store at -20°C in small aliquots to prevent freeze-thaw cycles.

Precautions

MTHFD2 Antibody (C-term) is for research use only and not for use in diagnostic or therapeutic procedures.

MTHFD2 Antibody (C-term) - Protein Information**Name** MTHFD2

Synonyms NMDMC

Function Although its dehydrogenase activity is NAD-specific, it can also utilize NADP at a reduced efficiency.

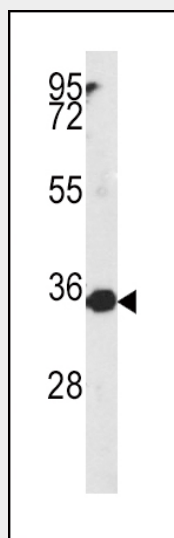
Cellular Location

Mitochondrion.

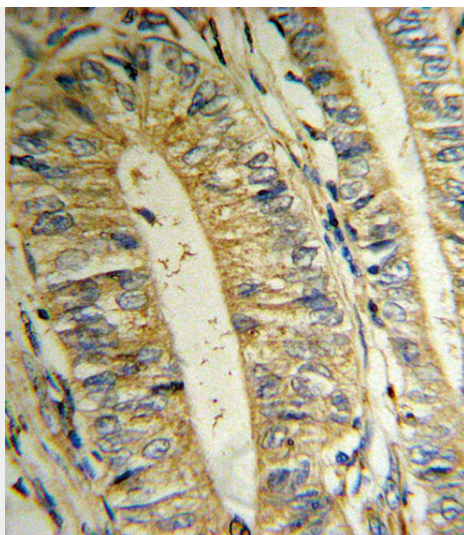
MTHFD2 Antibody (C-term) - Protocols

Provided below are standard protocols that you may find useful for product applications.

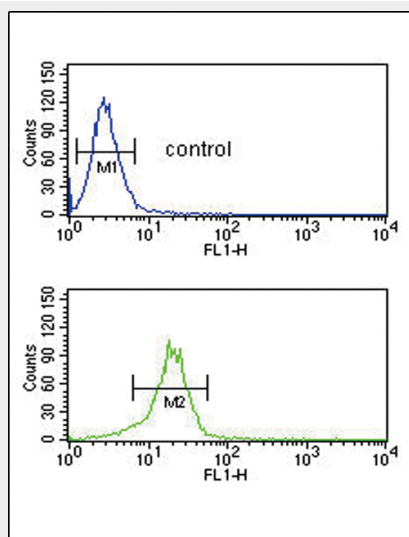
- [Western Blot](#)
- [Blocking Peptides](#)
- [Dot Blot](#)
- [Immunohistochemistry](#)
- [Immunofluorescence](#)
- [Immunoprecipitation](#)
- [Flow Cytometry](#)
- [Cell Culture](#)

MTHFD2 Antibody (C-term) - Images

Western blot analysis of MTHFD2 antibody (C-term) (Cat.# AP7362b) in NCI-H460 cell line lysates (35ug/lane). MTHFD2 (arrow) was detected using the purified Pab.



Formalin-fixed and paraffin-embedded human Colon carcinoma reacted with MTHFD2 Antibody (C-term), which was peroxidase-conjugated to the secondary antibody, followed by DAB staining. This data demonstrates the use of this antibody for immunohistochemistry; clinical relevance has not been evaluated.



MTHFD2 Antibody (C-term) (Cat. #AP7362b) flow cytometric analysis of NCI-H460 cells (bottom histogram) compared to a negative control cell (top histogram). FITC-conjugated goat-anti-rabbit secondary antibodies were used for the analysis.

MTHFD2 Antibody (C-term) - Background

MTHFD2 is a nuclear-encoded mitochondrial bifunctional enzyme with methylenetetrahydrofolate dehydrogenase and methenyltetrahydrofolate cyclohydrolase activities. The enzyme functions as a homodimer and is unique in its absolute requirement for magnesium and inorganic phosphate. Formation of the enzyme-magnesium complex allows binding of NAD.

MTHFD2 Antibody (C-term) - References

Wang, S.S., Leukemia 23 (3), 596-602 (2009)
Pawelek, P.D., Biochemistry 37 (4), 1109-1115 (1998)