

Vinculin Antibody (C-term)
Purified Rabbit Polyclonal Antibody (Pab)
Catalog # AP7426b**Specification**

Vinculin Antibody (C-term) - Product Information

| | |
|-------------------|---|
| Application | WB,E |
| Primary Accession | P18206 |
| Other Accession | P85972 , P26234 , Q64727 , P12003 |
| Reactivity | Human, Mouse |
| Predicted | Chicken, Pig, Rat |
| Host | Rabbit |
| Clonality | Polyclonal |
| Isotype | Rabbit IgG |
| Antigen Region | 1012-1039 |

Vinculin Antibody (C-term) - Additional Information**Gene ID** 7414**Other Names**

Vinculin, Metavinculin, MV, VCL

Target/Specificity

This VINC antibody is generated from rabbits immunized with a KLH conjugated synthetic peptide between 1012-1039 amino acids from the C-terminal region of human VINC.

Dilution

WB~~1:1000

Format

Purified polyclonal antibody supplied in PBS with 0.09% (W/V) sodium azide. This antibody is prepared by Saturated Ammonium Sulfate (SAS) precipitation followed by dialysis against PBS.

Storage

Maintain refrigerated at 2-8°C for up to 2 weeks. For long term storage store at -20°C in small aliquots to prevent freeze-thaw cycles.

Precautions

Vinculin Antibody (C-term) is for research use only and not for use in diagnostic or therapeutic procedures.

Vinculin Antibody (C-term) - Protein Information**Name** VCL

Function Actin filament (F-actin)-binding protein involved in cell- matrix adhesion and cell-cell adhesion. Regulates cell-surface E- cadherin expression and potentiates mechanosensing by the

E-cadherin complex. May also play important roles in cell morphology and locomotion.

Cellular Location

Cell membrane {ECO:0000250|UniProtKB:P12003}; Peripheral membrane protein {ECO:0000250|UniProtKB:P12003}; Cytoplasmic side {ECO:0000250|UniProtKB:P12003}. Cell junction, adherens junction {ECO:0000250|UniProtKB:P12003}. Cell junction, focal adhesion {ECO:0000250|UniProtKB:P12003}. Cytoplasm, cytoskeleton {ECO:0000250|UniProtKB:P85972}. Cell membrane, sarcolemma {ECO:0000250|UniProtKB:Q64727}; Peripheral membrane protein {ECO:0000250|UniProtKB:Q64727}; Cytoplasmic side {ECO:0000250|UniProtKB:Q64727}. Cell projection, podosome {ECO:0000250|UniProtKB:Q64727}. Note=Recruitment to cell-cell junctions occurs in a myosin II-dependent manner. Interaction with CTNNB1 is necessary for its localization to the cell-cell junctions {ECO:0000250|UniProtKB:P12003}

Tissue Location

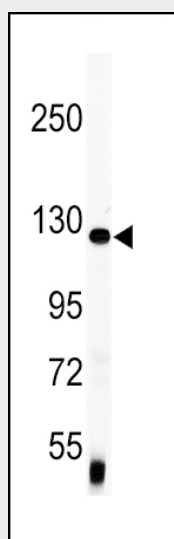
Metavinculin is muscle-specific.

Vinculin Antibody (C-term) - Protocols

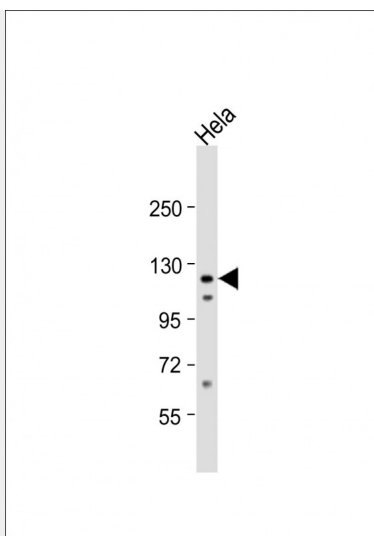
Provided below are standard protocols that you may find useful for product applications.

- [Western Blot](#)
- [Blocking Peptides](#)
- [Dot Blot](#)
- [Immunohistochemistry](#)
- [Immunofluorescence](#)
- [Immunoprecipitation](#)
- [Flow Cytometry](#)
- [Cell Culture](#)

Vinculin Antibody (C-term) - Images



Western blot analysis of anti-Vinculin Antibody (C-term)(Cat.#AP7426b) in mouse lung tissue lysates (35ug/lane). VINC (arrow) was detected using the purified Pab.



Anti-VINC Antibody (C-term) at 1:1000 dilution + HeLa whole cell lysate Lysates/proteins at 20 μ g per lane. Secondary Goat Anti-Rabbit IgG, (H+L), Peroxidase conjugated at 1/10000 dilution. Predicted band size : 124 kDa Blocking/Dilution buffer: 5% NFDM/TBST.

Vinculin Antibody (C-term) - Background

VINC is a cytoskeletal protein associated with cell-cell and cell-matrix junctions, where it is thought to function as one of several interacting proteins involved in anchoring F-actin to the membrane. Defects in VCL are the cause of cardiomyopathy dilated type 1W. Dilated cardiomyopathy is a disorder characterized by ventricular dilation and impaired systolic function, resulting in congestive heart failure and arrhythmia.

Vinculin Antibody (C-term) - References

Moiseyeva E.P., Weller P.A.J. Biol. Chem. 268:4318-4325(1993)
Sun N., Critchley D.R., Paulin D. Biochem. J. 409:657-667(2008)
Izard T., Evans G., Borgon R.A. Nature 427:171-175(2004)