

DDX39 Antibody (Center Y265)
Purified Rabbit Polyclonal Antibody (Pab)
Catalog # AP7451d**Specification**

DDX39 Antibody (Center Y265) - Product Information

Application	WB,E
Primary Accession	O00148
Other Accession	Q5U216 , Q8VDW0
Reactivity	Human
Predicted	Mouse, Rat
Host	Rabbit
Clonality	Polyclonal
Isotype	Rabbit IgG
Calculated MW	49130
Antigen Region	250-277

DDX39 Antibody (Center Y265) - Additional Information**Gene ID** 10212**Other Names**

ATP-dependent RNA helicase DDX39A, DEAD box protein 39, Nuclear RNA helicase URH49, DDX39A, DDX39

Target/Specificity

This DDX39 antibody is generated from rabbits immunized with a KLH conjugated synthetic peptide between 250-277 amino acids from the Central region of human DDX39.

Dilution

WB~~1:1000

Format

Purified polyclonal antibody supplied in PBS with 0.09% (W/V) sodium azide. This antibody is prepared by Saturated Ammonium Sulfate (SAS) precipitation followed by dialysis against PBS.

Storage

Maintain refrigerated at 2-8°C for up to 2 weeks. For long term storage store at -20°C in small aliquots to prevent freeze-thaw cycles.

Precautions

DDX39 Antibody (Center Y265) is for research use only and not for use in diagnostic or therapeutic procedures.

DDX39 Antibody (Center Y265) - Protein Information**Name** DDX39A

Synonyms DDX39

Function [Isoform 1]: Involved in pre-mRNA splicing. Required for the export of mRNA out of the nucleus.

Cellular Location

Nucleus. Cytoplasm. Note=Can translocate to the cytoplasm in the presence of MX1

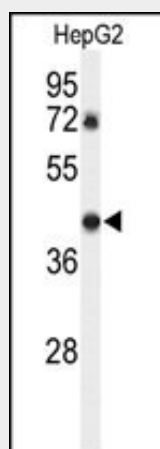
Tissue Location

Detected in testis, and at lower levels in brain, kidney, lung, thymus, spleen and salivary gland

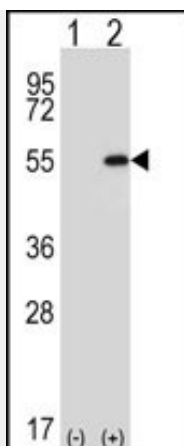
DDX39 Antibody (Center Y265) - Protocols

Provided below are standard protocols that you may find useful for product applications.

- [Western Blot](#)
- [Blocking Peptides](#)
- [Dot Blot](#)
- [Immunohistochemistry](#)
- [Immunofluorescence](#)
- [Immunoprecipitation](#)
- [Flow Cytometry](#)
- [Cell Culture](#)

DDX39 Antibody (Center Y265) - Images

Western blot analysis of DDX39 Antibody (Center Y265) (Cat. #AP7451d) in HepG2 cell line lysates (35ug/lane). DDX39 (arrow) was detected using the purified Pab.



Western blot analysis of DDX39 (arrow) using rabbit polyclonal DDX39 Antibody (Center Y265) (Cat. #AP7451d). 293 cell lysates (2 ug/lane) either nontransfected (Lane 1) or transiently transfected (Lane 2) with the DDX39 gene.

DDX39 Antibody (Center Y265) - Background

DDX39 is a member of the DEAD box protein family. These proteins are characterized by the conserved motif Asp-Glu-Ala-Asp (DEAD) and are putative RNA helicases. They are implicated in a number of cellular processes involving alteration of RNA secondary structure, such as translation initiation, nuclear and mitochondrial splicing, and ribosome and spliceosome assembly. Based on their distribution patterns, some members of the DEAD box protein family are believed to be involved in embryogenesis, spermatogenesis, and cellular growth and division.

DDX39 Antibody (Center Y265) - References

Pryor A., Tung L., Yang Z. *Nucleic Acids Res.* 32:1857-1865(2004)
Lehner B., Semple J.I., Brown S.E. *Genomics* 83:153-167(2004)