

IGFALS Antibody (Center)
Purified Rabbit Polyclonal Antibody (Pab)
Catalog # AP7478c**Specification**

IGFALS Antibody (Center) - Product Information

Application	WB, IHC-P, FC,E
Primary Accession	P35858
Reactivity	Human, Mouse
Host	Rabbit
Clonality	Polyclonal
Isotype	Rabbit IgG
Calculated MW	66035
Antigen Region	308-335

IGFALS Antibody (Center) - Additional Information**Gene ID** 3483**Other Names**

Insulin-like growth factor-binding protein complex acid labile subunit, ALS, IGFALS, ALS

Target/Specificity

This IGFALS antibody is generated from rabbits immunized with a KLH conjugated synthetic peptide between 308-335 amino acids from the Central region of human IGFALS.

Dilution

WB~~1:1000
IHC-P~~1:50~100
FC~~1:10~50

Format

Purified polyclonal antibody supplied in PBS with 0.09% (W/V) sodium azide. This antibody is prepared by Saturated Ammonium Sulfate (SAS) precipitation followed by dialysis against PBS.

Storage

Maintain refrigerated at 2-8°C for up to 2 weeks. For long term storage store at -20°C in small aliquots to prevent freeze-thaw cycles.

Precautions

IGFALS Antibody (Center) is for research use only and not for use in diagnostic or therapeutic procedures.

IGFALS Antibody (Center) - Protein Information**Name** IGFALS**Synonyms** ALS

Function Involved in protein-protein interactions that result in protein complexes, receptor-ligand binding or cell adhesion.

Cellular Location

Secreted, extracellular space.

Tissue Location

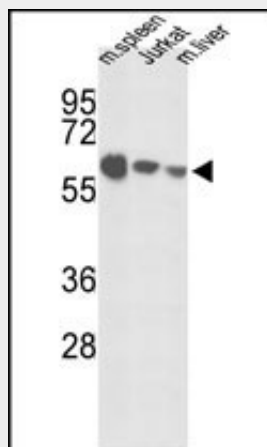
Plasma.

IGFALS Antibody (Center) - Protocols

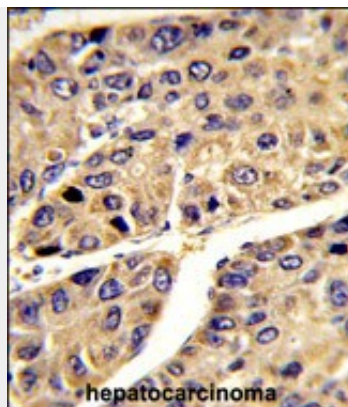
Provided below are standard protocols that you may find useful for product applications.

- [Western Blot](#)
- [Blocking Peptides](#)
- [Dot Blot](#)
- [Immunohistochemistry](#)
- [Immunofluorescence](#)
- [Immunoprecipitation](#)
- [Flow Cytometry](#)
- [Cell Culture](#)

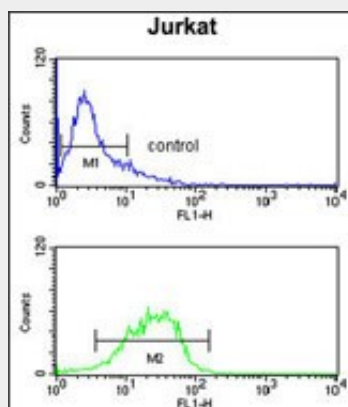
IGFALS Antibody (Center) - Images



Western blot analysis of IGFALS Antibody (Center) (Cat.#AP7478c) in mouse spleen tissue, Jurkat cell line and mouse liver tissue lysates (35ug/lane). IGFALS (arrow) was detected using the purified Pab.



Formalin-fixed and paraffin-embedded human hepatocarcinoma reacted with IGFALS Antibody (Center), which was peroxidase-conjugated to the secondary antibody, followed by DAB staining. This data demonstrates the use of this antibody for immunohistochemistry; clinical relevance has not been evaluated.



IGFALS Antibody (Center) (Cat. #AP7478c) flow cytometry analysis of Jurkat cells (bottom histogram) compared to a negative control cell (top histogram). FITC-conjugated goat-anti-rabbit secondary antibodies were used for the analysis.

IGFALS Antibody (Center) - Background

IGFALS is a serum protein that binds insulin-like growth factors, increasing their half-life and their vascular localization. Production of the protein, which contains twenty leucine-rich repeats, is stimulated by growth hormone. Defects in this protein are a cause of acid-labile subunit deficiency, which manifests itself in a delayed and slow puberty.

IGFALS Antibody (Center) - References

Leong S.R., Baxter R.C. Mol. Endocrinol. 6:870-876(1992)
Suwanichkul A. Endocrinology 141:833-838(2000)
Liu T., Qian W.-J. J. Proteome Res. 4:2070-2080(2005)