

MAOB Antibody (Center)
Purified Rabbit Polyclonal Antibody (Pab)
Catalog # AP7496c**Specification**

MAOB Antibody (Center) - Product Information

Application	WB,E
Primary Accession	P27338
Reactivity	Human, Mouse
Host	Rabbit
Clonality	Polyclonal
Isotype	Rabbit IgG
Calculated MW	58763
Antigen Region	303-334

MAOB Antibody (Center) - Additional Information**Gene ID** 4129**Other Names**

Amine oxidase [flavin-containing] B, Monoamine oxidase type B, MAO-B, MAOB

Target/Specificity

This MAOB antibody is generated from rabbits immunized with a KLH conjugated synthetic peptide between 303-334 amino acids from the Central region of human MAOB.

Dilution

WB~~1:1000

Format

Purified polyclonal antibody supplied in PBS with 0.09% (W/V) sodium azide. This antibody is prepared by Saturated Ammonium Sulfate (SAS) precipitation followed by dialysis against PBS.

Storage

Maintain refrigerated at 2-8°C for up to 2 weeks. For long term storage store at -20°C in small aliquots to prevent freeze-thaw cycles.

Precautions

MAOB Antibody (Center) is for research use only and not for use in diagnostic or therapeutic procedures.

MAOB Antibody (Center) - Protein Information**Name** MAOB ([HGNC:6834](#))

Function Catalyzes the oxidative deamination of primary and some secondary amines such as neurotransmitters, and exogenous amines including the tertiary amine, neurotoxin 1-methyl-4-phenyl-1,2,3,6- tetrahydropyridine (MPTP), with concomitant reduction of oxygen to

hydrogen peroxide and participates in the metabolism of neuroactive and vasoactive amines in the central nervous system and peripheral tissues (PubMed:[11134050](#), PubMed:[8665924](#), PubMed:[8316221](#), PubMed:[11049757](#), PubMed:[20493079](#)). Preferentially degrades benzylamine and phenylethylamine (PubMed:[11134050](#), PubMed:[8665924](#), PubMed:[8316221](#), PubMed:[11049757](#), PubMed:[20493079](#)).

Cellular Location

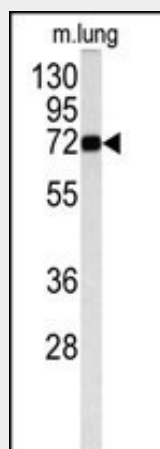
Mitochondrion outer membrane; Single-pass type IV membrane protein; Cytoplasmic side

MAOB Antibody (Center) - Protocols

Provided below are standard protocols that you may find useful for product applications.

- [Western Blot](#)
- [Blocking Peptides](#)
- [Dot Blot](#)
- [Immunohistochemistry](#)
- [Immunofluorescence](#)
- [Immunoprecipitation](#)
- [Flow Cytometry](#)
- [Cell Culture](#)

MAOB Antibody (Center) - Images



Western blot analysis of MAOB antibody (Center) (Cat.#AP7496c) in mouse lung tissue lysates (35ug/lane). MAOB (arrow) was detected using the purified Pab.

MAOB Antibody (Center) - Background

MAOB belongs to the flavin monoamine oxidase family. This protein is an enzyme located in the mitochondrial outer membrane. The protein catalyzes the oxidative deamination of biogenic and xenobiotic amines and plays an important role in the metabolism of neuroactive and vasoactive amines in the central nervous system and peripheral tissues. The protein preferentially degrades benzylamine and phenylethylamine.

MAOB Antibody (Center) - References

Bergen,S.E., Fanous,A.H. Schizophr. Res. 109 (1-3), 94-97 (2009)
Zhu,Q.S., Grimsby,J. J. Neurosci. 12 (11), 4437-4446 (1992)