

PRP4 Antibody (C-term)
Purified Rabbit Polyclonal Antibody (Pab)
Catalog # AP7551B

Specification

PRP4 Antibody (C-term) - Product Information

Application	WB, IHC-P,E
Primary Accession	Q13523
Other Accession	Q5RKH1 , Q61136 , Q08DZ2
Reactivity	Human
Predicted	Bovine, Mouse, Rat
Host	Rabbit
Clonality	Polyclonal
Isotype	Rabbit IgG
Calculated MW	116987
Antigen Region	948-978

PRP4 Antibody (C-term) - Additional Information

Gene ID 8899

Other Names

Serine/threonine-protein kinase PRP4 homolog, PRP4 kinase, PRP4 pre-mRNA-processing factor 4 homolog, PRPF4B, KIAA0536, PRP4, PRP4H, PRP4K

Target/Specificity

This PRP4 antibody is generated from rabbits immunized with a KLH conjugated synthetic peptide between 948-978 amino acids from the C-terminal region of human PRP4.

Dilution

WB~~1:1000
IHC-P~~1:50~100

Format

Purified polyclonal antibody supplied in PBS with 0.09% (W/V) sodium azide. This antibody is prepared by Saturated Ammonium Sulfate (SAS) precipitation followed by dialysis against PBS.

Storage

Maintain refrigerated at 2-8°C for up to 2 weeks. For long term storage store at -20°C in small aliquots to prevent freeze-thaw cycles.

Precautions

PRP4 Antibody (C-term) is for research use only and not for use in diagnostic or therapeutic procedures.

PRP4 Antibody (C-term) - Protein Information

Name PRPF4B

Synonyms KIAA0536, PRP4, PRP4H, PRP4K

Function Has a role in pre-mRNA splicing. Phosphorylates SF2/ASF.

Cellular Location
Nucleus.

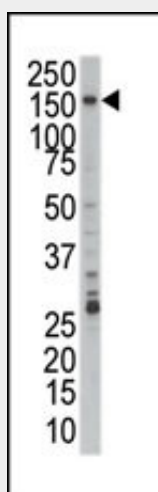
Tissue Location
Ubiquitous.

PRP4 Antibody (C-term) - Protocols

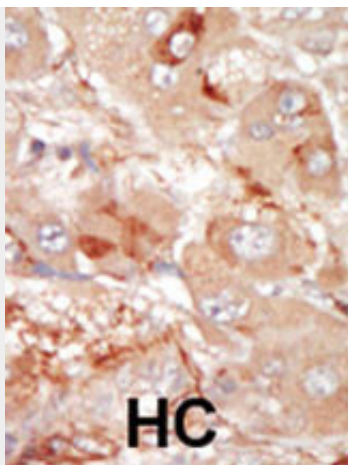
Provided below are standard protocols that you may find useful for product applications.

- [Western Blot](#)
- [Blocking Peptides](#)
- [Dot Blot](#)
- [Immunohistochemistry](#)
- [Immunofluorescence](#)
- [Immunoprecipitation](#)
- [Flow Cytometry](#)
- [Cell Culture](#)

PRP4 Antibody (C-term) - Images



Western blot analysis of anti-PRP4 Pab (Cat. #AP7551b) in Jurkat cell lysate. PRP4 (arrow) was detected using purified Pab. Secondary HRP-anti-rabbit was used for signal visualization with chemiluminescence.



Formalin-fixed and paraffin-embedded human cancer tissue reacted with the primary antibody, which was peroxidase-conjugated to the secondary antibody, followed by DAB staining. This data demonstrates the use of this antibody for immunohistochemistry; clinical relevance has not been evaluated. BC = breast carcinoma; HC = hepatocarcinoma.

PRP4 Antibody (C-term) - Background

Pre-mRNA splicing occurs in two sequential transesterification steps, and PRP4 is thought to be involved in pre-mRNA splicing and in signal transduction. This protein belongs to a kinase family that includes serine/arginine-rich protein-specific kinases and cyclin-dependent kinases (CDKs). This protein is regarded as a CDK-like kinase (Clk) with homology to mitogen-activated protein kinases (MAPKs).

PRP4 Antibody (C-term) - References

- Dellaire, G., et al., Mol. Cell. Biol. 22(14):5141-5156 (2002).
- Kojima, T., et al., J. Biol. Chem. 276(34):32247-32256 (2001).
- Huang, Y., et al., Biochem. Biophys. Res. Commun. 271(2):456-463 (2000).
- Gross, T., et al., Nucleic Acids Res. 25(5):1028-1035 (1997).