

CLIC5 Antibody
Purified Rabbit Polyclonal Antibody (Pab)
Catalog # AP7583a**Specification**

CLIC5 Antibody - Product Information

Application	WB, IHC-P,E
Primary Accession	O9NZA1
Reactivity	Human
Host	Rabbit
Clonality	Polyclonal
Isotype	Rabbit IgG
Calculated MW	46503

CLIC5 Antibody - Additional Information**Gene ID** 53405**Other Names**

Chloride intracellular channel protein 5, CLIC5

Target/Specificity

This CLIC5 antibody is generated from rabbits immunized with human recombinant CLIC5 protein.

Dilution

WB~~1:1000

IHC-P~~1:10~50

Format

Purified polyclonal antibody supplied in PBS with 0.09% (W/V) sodium azide. This antibody is prepared by Saturated Ammonium Sulfate (SAS) precipitation followed by dialysis against PBS.

Storage

Maintain refrigerated at 2-8°C for up to 2 weeks. For long term storage store at -20°C in small aliquots to prevent freeze-thaw cycles.

Precautions

CLIC5 Antibody is for research use only and not for use in diagnostic or therapeutic procedures.

CLIC5 Antibody - Protein Information**Name** CLIC5

Function Required for normal hearing (PubMed:[24781754](#)). It is necessary for the formation of stereocilia in the inner ear and normal development of the organ of Corti (By similarity). Can insert into membranes and form poorly selective ion channels that may also transport chloride ions. May play a role in the regulation of transepithelial ion absorption and secretion. Is required for the development and/or maintenance of the proper glomerular endothelial cell and podocyte

architecture (PubMed:[15184393](#), PubMed:[18028448](#), PubMed:[20335315](#)). Plays a role in formation of the lens suture in the eye, which is important for normal optical properties of the lens (By similarity).

Cellular Location

[Isoform 1]: Cytoplasm, cytoskeleton. Cytoplasm, cell cortex. Membrane; Single-pass membrane protein. Apical cell membrane; Single-pass membrane protein. Cytoplasm {ECO:0000250|UniProtKB:O00299}. Mitochondrion {ECO:0000250|UniProtKB:Q9EPT8}. Note=Associates with the cortical actin cytoskeleton (PubMed:10793131, PubMed:15184393). Localizes to the apical region of cochlear hair cells, at the base of the actin-rich hair bundle (By similarity). Colocalizes with podocalyxin at the apical cell membrane in renal glomeruli (PubMed:20335315). May localize to the centrosome in lens epithelial cells (By similarity). Exists both as soluble cytoplasmic protein and as membrane protein with probably a single transmembrane domain (By similarity) {ECO:0000250|UniProtKB:O00299, ECO:0000250|UniProtKB:Q8BXK9, ECO:0000250|UniProtKB:Q9EPT8, ECO:0000269|PubMed:10793131, ECO:0000269|PubMed:15184393, ECO:0000269|PubMed:20335315}

Tissue Location

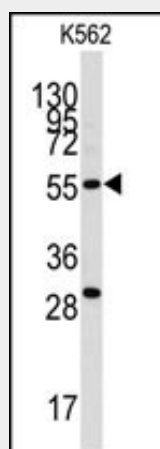
Widely expressed in both fetal and adult human tissues (PubMed:24781754). Isoform 1 is expressed in renal glomeruli endothelial cells and podocytes (at protein level)

CLIC5 Antibody - Protocols

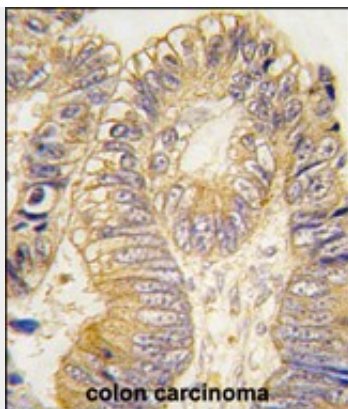
Provided below are standard protocols that you may find useful for product applications.

- [Western Blot](#)
- [Blocking Peptides](#)
- [Dot Blot](#)
- [Immunohistochemistry](#)
- [Immunofluorescence](#)
- [Immunoprecipitation](#)
- [Flow Cytometry](#)
- [Cell Culture](#)

CLIC5 Antibody - Images



Western blot analysis of anti-CLIC5 Antibody (Cat.#AP7583a) in K562 cell line lysates (35ug/lane). CLIC5 (arrow) was detected using the purified Pab.



Formalin-fixed and paraffin-embedded human colon carcinoma tissue reacted with CLIC5 antibody (Cat.#AP7583a), which was peroxidase-conjugated to the secondary antibody, followed by DAB staining. This data demonstrates the use of this antibody for immunohistochemistry; clinical relevance has not been evaluated.

CLIC5 Antibody - Background

Chloride intracellular channels are involved in chloride ion transport within various subcellular compartments. CLIC5 specifically associates with the cytoskeleton of placenta microvilli.

CLIC5 Antibody - References

Berryman, M., J. Biol. Chem. 279 (33), 34794-34801 (2004)
Suzuki, T., Epilepsy Res. 50 (3), 265-275 (2002)