

**XPOT Antibody (C-term)**  
**Purified Rabbit Polyclonal Antibody (Pab)**  
**Catalog # AP7632b****Specification**

---

**XPOT Antibody (C-term) - Product Information**

Application	WB, IHC-P, FC,E
Primary Accession	<a href="#">O43592</a>
Other Accession	<a href="#">Q9CRT8</a>
Reactivity	Human
Predicted	Mouse
Host	Rabbit
Clonality	Polyclonal
Isotype	Rabbit IgG
Calculated MW	109964
Antigen Region	935-962

**XPOT Antibody (C-term) - Additional Information****Gene ID** 11260**Other Names**

Exportin-T, Exportin(tRNA), tRNA exportin, XPOT

**Target/Specificity**

This XPOT antibody is generated from rabbits immunized with a KLH conjugated synthetic peptide between 935-962 amino acids from the C-terminal region of human XPOT.

**Dilution**

WB~~1:1000  
IHC-P~~1:50~100  
FC~~1:10~50

**Format**

Purified polyclonal antibody supplied in PBS with 0.09% (W/V) sodium azide. This antibody is prepared by Saturated Ammonium Sulfate (SAS) precipitation followed by dialysis against PBS.

**Storage**

Maintain refrigerated at 2-8°C for up to 2 weeks. For long term storage store at -20°C in small aliquots to prevent freeze-thaw cycles.

**Precautions**

XPOT Antibody (C-term) is for research use only and not for use in diagnostic or therapeutic procedures.

**XPOT Antibody (C-term) - Protein Information****Name** XPOT

**Function** Mediates the nuclear export of aminoacylated tRNAs. In the nucleus binds to tRNA and to the GTPase Ran in its active GTP-bound form. Docking of this trimeric complex to the nuclear pore complex (NPC) is mediated through binding to nucleoporins. Upon transit of a nuclear export complex into the cytoplasm, disassembling of the complex and hydrolysis of Ran-GTP to Ran-GDP (induced by RANBP1 and RANGAP1, respectively) cause release of the tRNA from the export receptor. XPOT then return to the nuclear compartment and mediate another round of transport. The directionality of nuclear export is thought to be conferred by an asymmetric distribution of the GTP- and GDP-bound forms of Ran between the cytoplasm and nucleus.

#### **Cellular Location**

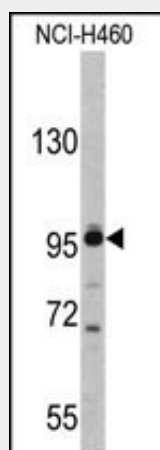
Nucleus. Cytoplasm. Note=Nuclear, once bound to tRNA and Ran the complex translocates to the cytoplasm. Shuttles between the nucleus and the cytoplasm

#### **XPOT Antibody (C-term) - Protocols**

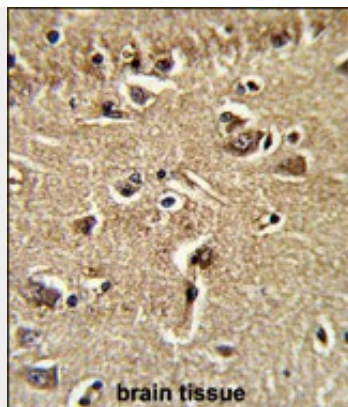
Provided below are standard protocols that you may find useful for product applications.

- [Western Blot](#)
- [Blocking Peptides](#)
- [Dot Blot](#)
- [Immunohistochemistry](#)
- [Immunofluorescence](#)
- [Immunoprecipitation](#)
- [Flow Cytometry](#)
- [Cell Culture](#)

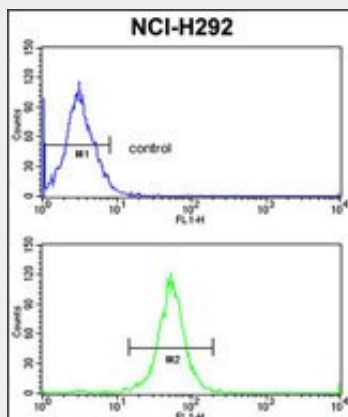
#### **XPOT Antibody (C-term) - Images**



Western blot analysis of XPOT antibody (C-term) (Cat. #AP7632b) in NCI-H460 cell line lysates (35ug/lane). XPOT (arrow) was detected using the purified Pab.



Formalin-fixed and paraffin-embedded human brain tissue reacted with XPOT Antibody (C-term), which was peroxidase-conjugated to the secondary antibody, followed by DAB staining. This data demonstrates the use of this antibody for immunohistochemistry; clinical relevance has not been evaluated.



XPOT Antibody (C-term) (Cat. #AP7632b) flow cytometric analysis of NCI-H292 cells (bottom histogram) compared to a negative control cell (top histogram). FITC-conjugated goat-anti-rabbit secondary antibodies were used for the analysis.

### XPOT Antibody (C-term) - Background

XPOT is a protein belonging to the RAN-GTPase exportin family that mediates export of tRNA from the nucleus to the cytoplasm. Translocation of tRNA to the cytoplasm occurs once exportin has bound both tRNA and GTP-bound RAN.

### XPOT Antibody (C-term) - References

- Li, S., RNA Biol 3 (4), 145-149 (2006)
- Suzuki, T., Biomed. Res. 27 (2), 89-92 (2006)
- Kuersten, S., Mol. Cell. Biol. 22 (16), 5708-5720 (2002)