

**IGFBP3 Antibody (N-term)**  
**Purified Rabbit Polyclonal Antibody (Pab)**  
**Catalog # AP7641A****Specification**

---

**IGFBP3 Antibody (N-term) - Product Information**

Application	WB, IHC-P,E
Primary Accession	<a href="#">P17936</a>
Other Accession	<a href="#">P15473</a>
Reactivity	Human
Predicted	Rat
Host	Rabbit
Clonality	Polyclonal
Isotype	Rabbit IgG
Calculated MW	31674
Antigen Region	163-193

**IGFBP3 Antibody (N-term) - Additional Information****Gene ID** 3486**Other Names**

Insulin-like growth factor-binding protein 3, IBP-3, IGF-binding protein 3, IGFBP-3, IGFBP3, IBP3

**Target/Specificity**

This IGFBP3 antibody is generated from rabbits immunized with a KLH conjugated synthetic peptide between 163-193 amino acids from the N-terminal region of human IGFBP3.

**Dilution**

WB~~1:1000

IHC-P~~1:10~50

**Format**

Purified polyclonal antibody supplied in PBS with 0.09% (W/V) sodium azide. This antibody is purified through a protein G column, followed by dialysis against PBS.

**Storage**

Maintain refrigerated at 2-8°C for up to 2 weeks. For long term storage store at -20°C in small aliquots to prevent freeze-thaw cycles.

**Precautions**

IGFBP3 Antibody (N-term) is for research use only and not for use in diagnostic or therapeutic procedures.

**IGFBP3 Antibody (N-term) - Protein Information****Name** IGFBP3

### Synonyms IBP3

**Function** IGF-binding proteins prolong the half-life of the IGFs and have been shown to either inhibit or stimulate the growth promoting effects of the IGFs on cell culture. They alter the interaction of IGFs with their cell surface receptors. Also exhibits IGF-independent antiproliferative and apoptotic effects mediated by its receptor TMEM219/IGFBP-3R. Inhibits the positive effect of humanin on insulin sensitivity (PubMed:[19623253](#)). Promotes testicular germ cell apoptosis (PubMed:[19952275](#)).

### Cellular Location

Secreted.

### Tissue Location

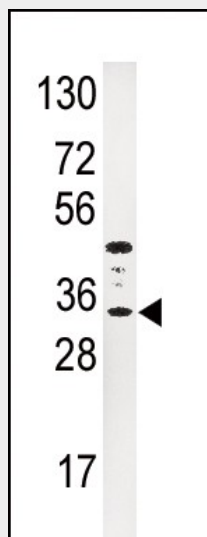
Expressed by most tissues. Present in plasma.

### IGFBP3 Antibody (N-term) - Protocols

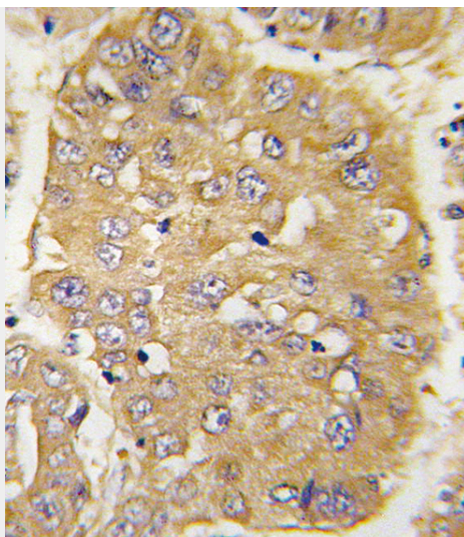
Provided below are standard protocols that you may find useful for product applications.

- [Western Blot](#)
- [Blocking Peptides](#)
- [Dot Blot](#)
- [Immunohistochemistry](#)
- [Immunofluorescence](#)
- [Immunoprecipitation](#)
- [Flow Cytometry](#)
- [Cell Culture](#)

### IGFBP3 Antibody (N-term) - Images



Western blot analysis of anti-IGFBP3 Antibody (N-term) (Cat. #AP7641a) in HepG2 cell line lysates (35ug/lane). IGFBP3 (arrow) was detected using the purified Pab.



Formalin-fixed and paraffin-embedded human hepatocarcinoma tissue reacted with IGFBP3 Antibody (N-term) (Cat.#AP7641a), which was peroxidase-conjugated to the secondary antibody, followed by DAB staining. This data demonstrates the use of this antibody for immunohistochemistry; clinical relevance has not been evaluated.

#### **IGFBP3 Antibody (N-term) - Background**

IGFBP3 is a member of the insulin-like growth factor binding protein (IGFBP) family with an IGFBP domain and a thyroglobulin type-I domain. The protein forms a ternary complex with insulin-like growth factor acid-labile subunit (IGFALS) and either insulin-like growth factor (IGF) I or II. In this form, it circulates in the plasma, prolonging the half-life of IGFs and altering their interaction with cell surface receptors.

#### **IGFBP3 Antibody (N-term) - References**

Muzumdar,R.H., Diabetes 55 (10), 2788-2796 (2006)  
Novosyadlyy,R., Growth Horm. IGF Res. 15 (5), 313-323 (2005)