

ILK1/ILK2 Antibody (N-term)
Purified Rabbit Polyclonal Antibody (Pab)
Catalog # AP7651a**Specification**

ILK1/ILK2 Antibody (N-term) - Product Information

Application	WB, IHC-P,E
Primary Accession	O55222
Other Accession	Q99J82 , Q13418 , Q3SWY2 , Q9DF58
Reactivity	Human
Predicted	Bovine, Chicken, Rat
Host	Rabbit
Clonality	Polyclonal
Isotype	Rabbit IgG
Antigen Region	11-41

ILK1/ILK2 Antibody (N-term) - Additional Information**Gene ID** 16202**Other Names**

Integrin-linked protein kinase, Ilk

Target/Specificity

This ILK1/ILK2 antibody is generated from rabbits immunized with a KLH conjugated synthetic peptide between 11-41 amino acids from the N-terminal region of mouse ILK1/ILK2.

Dilution

WB~~1:1000

IHC-P~~1:50~100

Format

Purified polyclonal antibody supplied in PBS with 0.09% (W/V) sodium azide. This antibody is prepared by Saturated Ammonium Sulfate (SAS) precipitation followed by dialysis against PBS.

Storage

Maintain refrigerated at 2-8°C for up to 2 weeks. For long term storage store at -20°C in small aliquots to prevent freeze-thaw cycles.

Precautions

ILK1/ILK2 Antibody (N-term) is for research use only and not for use in diagnostic or therapeutic procedures.

ILK1/ILK2 Antibody (N-term) - Protein Information**Name** Ilk {ECO:0000312|MGI:MGI:1195267}**Function** Receptor-proximal protein kinase regulating integrin-mediated signal transduction. May

act as a mediator of inside-out integrin signaling. Focal adhesion protein part of the complex ILK-PINCH. This complex is considered to be one of the convergence points of integrin- and growth factor-signaling pathway. Could be implicated in mediating cell architecture, adhesion to integrin substrates and anchorage-dependent growth in epithelial cells. Regulates cell motility by forming a complex with PARVB. Phosphorylates beta-1 and beta-3 integrin subunit on serine and threonine residues, but also AKT1 and GSK3B.

Cellular Location

Cell junction, focal adhesion. Cell membrane; Peripheral membrane protein; Cytoplasmic side {ECO:0000250|UniProtKB:Q13418}. Cytoplasm, myofibril, sarcomere {ECO:0000250|UniProtKB:Q13418}. Cell projection, lamellipodium

Tissue Location

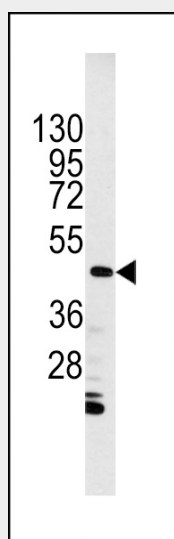
Highly expressed in lung, heart, kidney, liver, brain, spleen and skeletal muscle. Weakly expressed in testis

ILK1/ILK2 Antibody (N-term) - Protocols

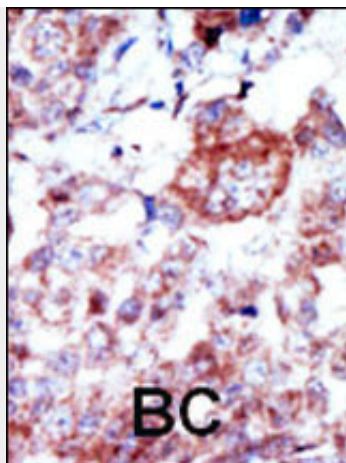
Provided below are standard protocols that you may find useful for product applications.

- [Western Blot](#)
- [Blocking Peptides](#)
- [Dot Blot](#)
- [Immunohistochemistry](#)
- [Immunofluorescence](#)
- [Immunoprecipitation](#)
- [Flow Cytometry](#)
- [Cell Culture](#)

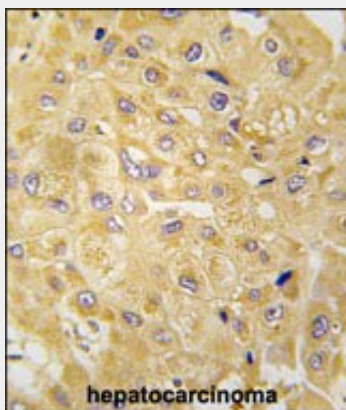
ILK1/ILK2 Antibody (N-term) - Images



Western blot analysis of anti-ILK1 Pab (Cat. #AP7651a) in HL60 cell lysate. ILK1 (Arrow) was detected using purified Pab. Secondary HRP-anti-rabbit was used for signal visualization with chemiluminescence.



Formalin-fixed and paraffin-embedded human cancer tissue reacted with the primary antibody, which was peroxidase-conjugated to the secondary antibody, followed by AEC staining. This data demonstrates the use of this antibody for immunohistochemistry; clinical relevance has not been evaluated. BC = breast carcinoma; HC = hepatocarcinoma.



Formalin-fixed and paraffin-embedded human hepatocarcinoma tissue reacted with ILK1/ILK2 Antibody (N-term) (Cat.#AP7651a), which was peroxidase-conjugated to the secondary antibody, followed by DAB staining. This data demonstrates the use of this antibody for immunohistochemistry; clinical relevance has not been evaluated.

ILK1/ILK2 Antibody (N-term) - Background

Transduction of extracellular matrix signals through integrins influences intracellular and extracellular functions, and appears to require interaction of integrin cytoplasmic domains with cellular proteins. Integrin-linked kinase (ILK), interacts with the cytoplasmic domain of beta-1 integrin. ILK encodes a predicted 451-amino acid protein, with an apparent molecular weight of 59 kD. The ILK protein is a serine/threonine protein kinase with 4 ankyrin-like repeats. ILK regulates integrin-mediated signal transduction.

ILK1/ILK2 Antibody (N-term) - References

- Li, Y., et al., J. Clin. Invest. 112(4):503-516 (2003).
- Troussard, A.A., et al., J. Biol. Chem. 278(25):22374-22378 (2003).
- Marotta, A., et al., Br. J. Cancer 88(11):1755-1762 (2003).
- Cordes, N., et al., Br. J. Cancer 88(9):1470-1479 (2003).
- Fukuda, T., et al., J. Cell Biol. 160(7):1001-1008 (2003).

ILK1/ILK2 Antibody (N-term) - Citations

- [Prognostic significance of epithelial-mesenchymal transition in malignant pleural](#)

[mesothelioma.](#)

- [Carcinoembryonic antigen inhibits anoikis in colorectal carcinoma cells by interfering with TRAIL-R2 \(DR5\) signaling.](#)