

CPE Antibody (C-term)
Purified Rabbit Polyclonal Antibody (Pab)
Catalog # AP7657b**Specification**

CPE Antibody (C-term) - Product Information

Application	WB,E
Primary Accession	P16870
Other Accession	Q4R4M3 , P04836
Reactivity	Human, Mouse
Predicted	Bovine, Monkey
Host	Rabbit
Clonality	Polyclonal
Isotype	Rabbit IgG
Calculated MW	53151
Antigen Region	381-412

CPE Antibody (C-term) - Additional Information**Gene ID** 1363**Other Names**

Carboxypeptidase E, CPE, Carboxypeptidase H, CPH, Enkephalin convertase, Prohormone-processing carboxypeptidase, CPE

Target/Specificity

This CPE antibody is generated from rabbits immunized with a KLH conjugated synthetic peptide between 381-412 amino acids from the C-terminal region of human CPE.

Dilution

WB~~1:1000

Format

Purified polyclonal antibody supplied in PBS with 0.09% (W/V) sodium azide. This antibody is prepared by Saturated Ammonium Sulfate (SAS) precipitation followed by dialysis against PBS.

Storage

Maintain refrigerated at 2-8°C for up to 2 weeks. For long term storage store at -20°C in small aliquots to prevent freeze-thaw cycles.

Precautions

CPE Antibody (C-term) is for research use only and not for use in diagnostic or therapeutic procedures.

CPE Antibody (C-term) - Protein Information**Name** CPE

Function Sorting receptor that directs prohormones to the regulated secretory pathway. Acts also as a prohormone processing enzyme in neuro/endocrine cells, removing dibasic residues from the C-terminal end of peptide hormone precursors after initial endoprotease cleavage.

Cellular Location

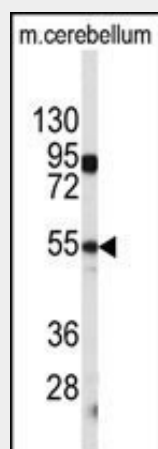
[Isoform 1]: Cytoplasmic vesicle, secretory vesicle {ECO:0000250|UniProtKB:Q00493}. Cytoplasmic vesicle, secretory vesicle membrane {ECO:0000250|UniProtKB:P15087}; Peripheral membrane protein {ECO:0000250|UniProtKB:P15087}. Secreted {ECO:0000250|UniProtKB:P15087}. Note=Associated with the secretory granule membrane through direct binding to lipid rafts in intragranular conditions. {ECO:0000250|UniProtKB:Q00493}

CPE Antibody (C-term) - Protocols

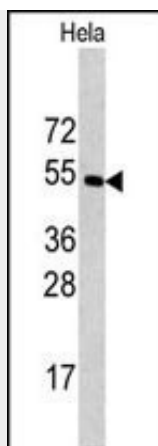
Provided below are standard protocols that you may find useful for product applications.

- [Western Blot](#)
- [Blocking Peptides](#)
- [Dot Blot](#)
- [Immunohistochemistry](#)
- [Immunofluorescence](#)
- [Immunoprecipitation](#)
- [Flow Cytometry](#)
- [Cell Culture](#)

CPE Antibody (C-term) - Images



Western blot analysis of CPE antibody (C-term) (Cat.#AP7657b) in mouse cerebellum tissue lysates (35ug/lane). CPE (arrow) was detected using the purified Pab.



Western blot analysis of CPE antibody (C-term)(Cat.#AP7657b) in HeLa cell line lysates (35ug/lane). CPE (arrow) was detected using the purified Pab.

CPE Antibody (C-term) - Background

CPE is a carboxypeptidase that cleaves C-terminal amino acid residues and is involved in the biosynthesis of peptide hormones and neurotransmitters, including insulin. It is a peripheral membrane protein. The protein specifically binds regulated secretory pathway proteins, including prohormones, but not constitutively secreted proteins. Mutations in CPE gene are implicated in type II diabetes.

CPE Antibody (C-term) - References

Oiso,S., J. Neurochem. 109 (1), 158-167 (2009)
Yang,L., Ann. N. Y. Acad. Sci. 1150, 263-266 (2008)
Jeffrey,K.D., Proc. Natl. Acad. Sci. U.S.A. 105 (24), 8452-8457 (2008)